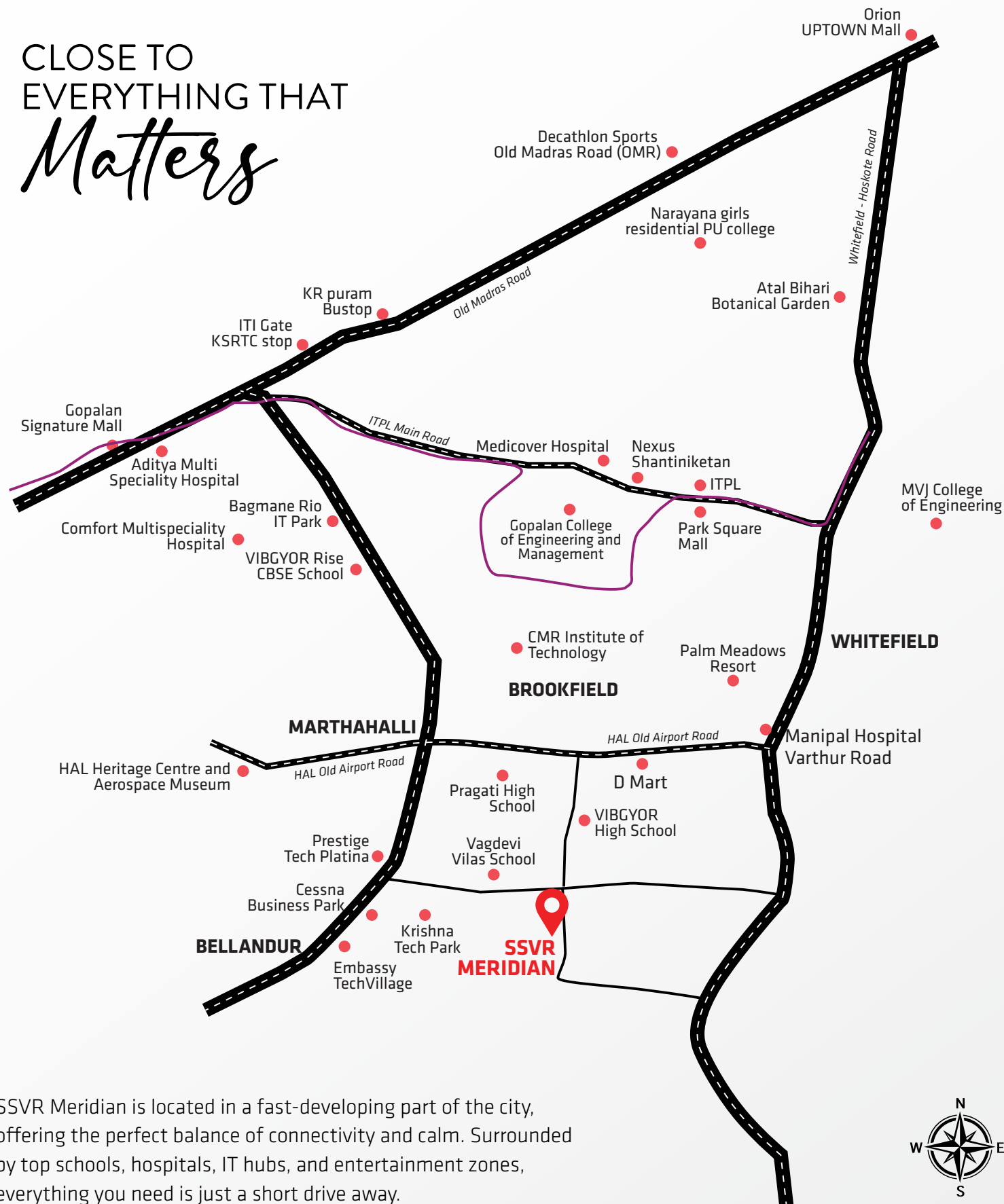


CLOSE TO
EVERYTHING THAT
Matters



SSVR Meridian is located in a fast-developing part of the city, offering the perfect balance of connectivity and calm. Surrounded by top schools, hospitals, IT hubs, and entertainment zones, everything you need is just a short drive away.

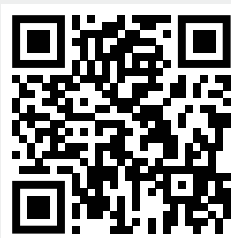
Address

SSVR Meridian, #SY No: 46/12,46/13,46/16 & 46/17
KHANA No:5290, BBMP-W-149, Panathur Village, Varthur Hobli, Bengaluru East,
Bengaluru Urban, Karnataka - 560103

+91 89512 19512

sales.ssvrmeridean@gmail.com

Scan QR code

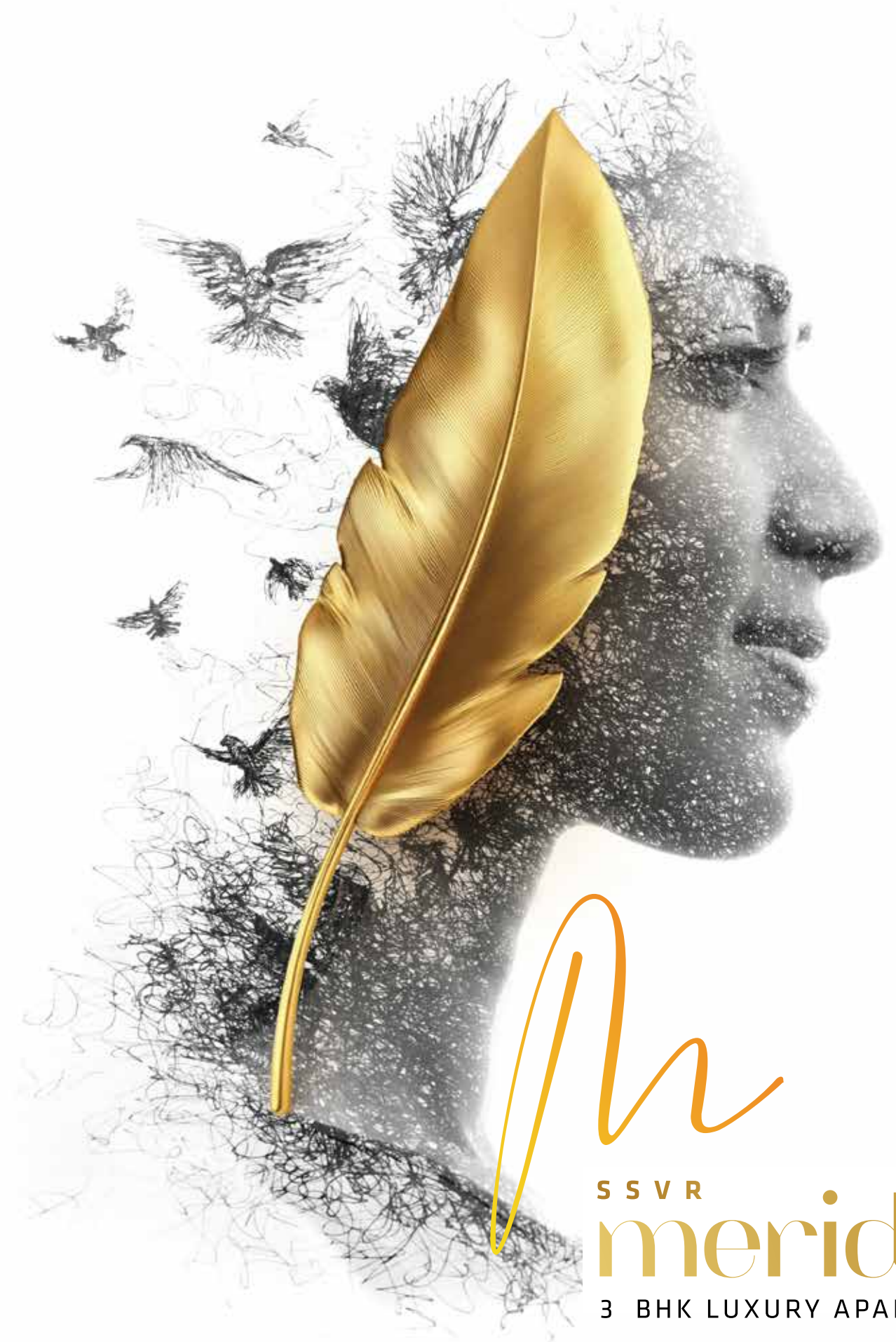


For Location

PROJECT BY :



WHERE EVERY DETAIL
shines LIKE GOLD



SSVR
meridian
3 BHK LUXURY APARTMENTS



WELCOME TO

M
SSVR
meridian

A thoughtfully envisioned residential community where elegance meets function. Designed for those who seek a refined lifestyle without compromise, SSVR Meridian brings you premium 3 BHK residences set in a tranquil yet well-connected location.

Every inch of this development has been crafted to enhance everyday living—offering the perfect balance of serenity, smart design, vibrant community living, and luxurious comfort.

WHERE EVERYDAY LIVING MEETS
ELEVATED COMFORT.

A LIFESTYLE BEYOND *Compare*

SSVR Meridian redefines what it means to live well. The residences are nestled within a beautifully planned layout that seamlessly blends nature and structure, giving residents a holistic living experience. With a modern architectural design, vastu-aligned homes, and carefully articulated open spaces, Meridian isn't just about where you live, but how you live.

119
UNITS

70%
Open Space

3BHK
Apartments

19 LEVELS
B+S+17 Floors

10+
Amenities

100%
Vastu Compliance

1.2
Acres

SSVR MERIDIAN

A HOME THAT GROWS WITH YOU

Master PLAN

The masterplan of SSVR Meridian is designed for comfort, space, and community living. Towers are placed to allow natural light and ventilation. Green areas, wide roads, and traffic-free zones ensure safety and peace. Amenities and open spaces are well-planned to offer both privacy and connection.



LEGENDS

- 01 ENTRY/EXIT
- 02. CAR PARKING
- 03. LANDSCAPE
- 04. CRICKET PRACTICE NET
- 05. HALF BASKET BALL COURT
- 06. CHILDREN'S PLAY AREA
- 07. SENIOR SEATING AREA
- 08. GARDEN
- 09. KIDS' POOL
- 10. SWIMMING POOL
- 11. GAZEBO



First FLOOR PLAN

FOR THE FEW WHO LIVE WITHOUT COMPROMISE

These homes offer an optimal blend of functionality and aesthetic appeal. The living and dining areas flow effortlessly into a well-ventilated balcony that invites light and breeze into your home.



S.No	SBA	Facing
01	1600	West
02	1500	North
03	1430	North
04	1430	North
05	1690	East
06	1575	East
07	1475	East



SMARTLY PLANNED FLOORS THAT OFFER SEAMLESS FLOW, FUNCTIONAL SPACES, AND MODERN COMFORT ON EVERY LEVEL



Typical FLOOR PLAN (2-17)

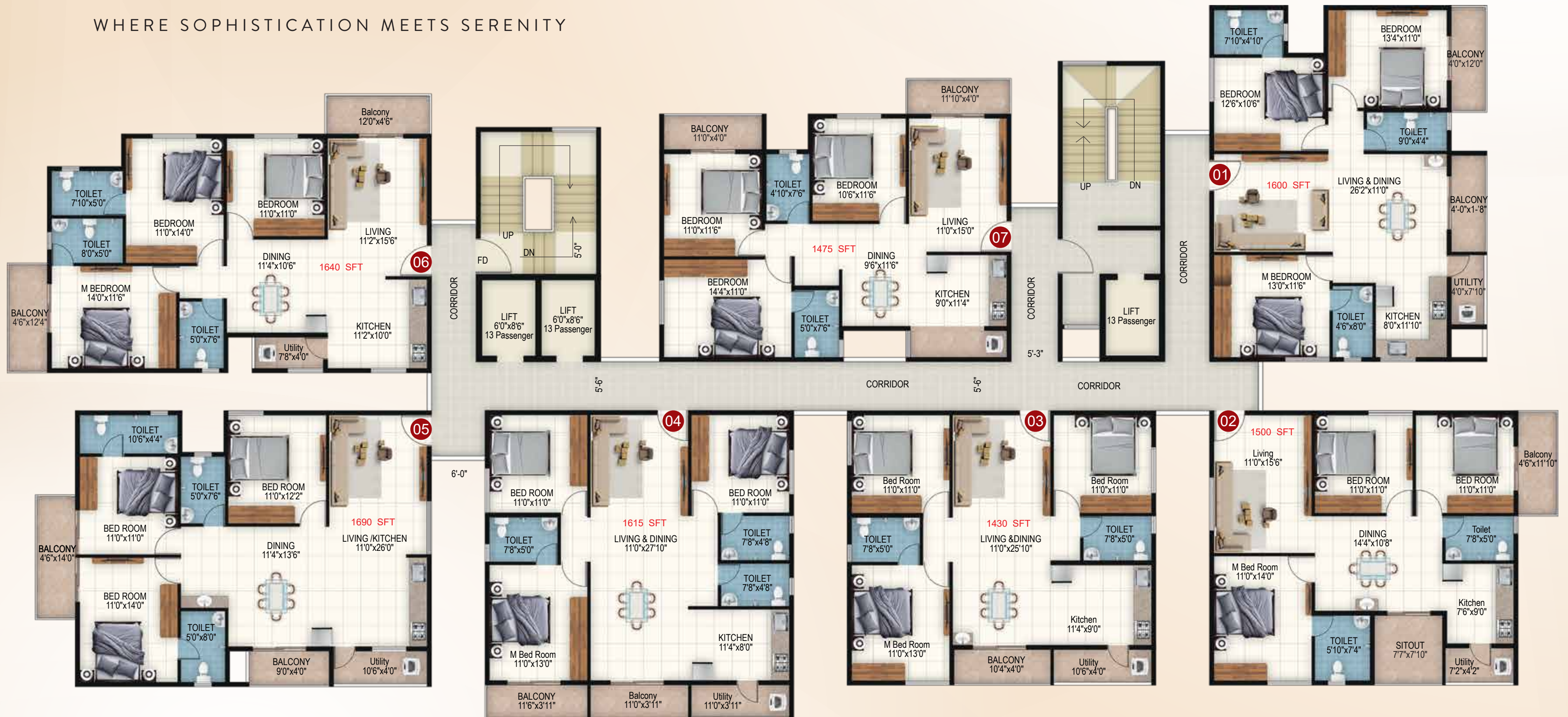
SSVR Meridian is thoughtfully designed to ensure smooth circulation and functional space distribution. Each floor features well-laid-out 3 BHK apartments with wide corridors, smart unit placements, and easy access to lifts and staircases. The design creates a clean, efficient layout that enhances everyday living while maintaining a refined sense of order throughout the building.

2-17 FLOOR PLAN

S.No	SBA	Facing
01	1600	West
02	1500	North
03	1430	North
04	1615	North
05	1690	East
06	1640	East
07	1475	East



WHERE SOPHISTICATION MEETS SERENITY





3BHK
Facing : WEST
1600 SQFT



3BHK
Facing : NORTH
1615 SQFT



3BHK
Facing : NORTH
1430 SQFT



3BHK
Facing : NORTH
1500 SQFT



3BHK
Facing : EAST
1475 SQFT



3BHK
Facing : EAST
1640 SQFT



3BHK
Facing : EAST
1690 SQFT

Amenities

THAT ELEVATE EVERY MOMENT

Step outside and you'll find yourself in a world of recreational abundance. SSVR Meridian boasts a host of outdoor amenities designed for wellness, play, and rejuvenation, the outdoors here are made for memories.



Residents can enjoy a modern, fully equipped gymnasium, an indoor games room, and a multi-purpose hall for community events and private celebrations.



EVERYTHING YOU NEED. MORE THAN YOU EXPECT.



OUTDOOR AMENITIES:

- JOGGING TRACK
- MULTIPURPOSE COURT
- OUTDOOR CHILDREN'S PLAY AREA
- HALF BASKET BALL COURT
- FOUNTAIN
- SENIOR SEATING AREA
- Gym
- SWIMMING POOL
- CRICKET PRACTICE NET

INDULGE IN THE EXTRAORDINARY



THE
HEIGHT OF
Luxury
THE HEART
OF THE *City.*

Strategically located in a fast-developing and well-connected part of the city, SSVR Meridian ensures that your home is at the heart of convenience. Situated close to key IT hubs, prominent schools, reputed hospitals, shopping destinations, and entertainment zones, this project allows you to stay connected to everything that matters.

Despite its central accessibility, the location enjoys an atmosphere of calm and openness, making it ideal for peaceful family living. Whether you're commuting to work, taking your children to school, or planning a weekend outing, everything is just a short drive away.



Premium SPECIFICATIONS



FRAMED STRUCTURE

RCC Framed Structure.



WALLS

6' Porotherm Blocks for External Walls & 4' Porotherm Blocks for internal walls.



PLASTERING

Sponge finish for external walls & Gypsum plastering for internal walls.



DOORS

Main doors teak wood frame with Venier polish Shutter & internal doors with Salwood frames with designer skin molded shutters.



WINDOW

UPVC windows with mosquito mesh & safety grills.



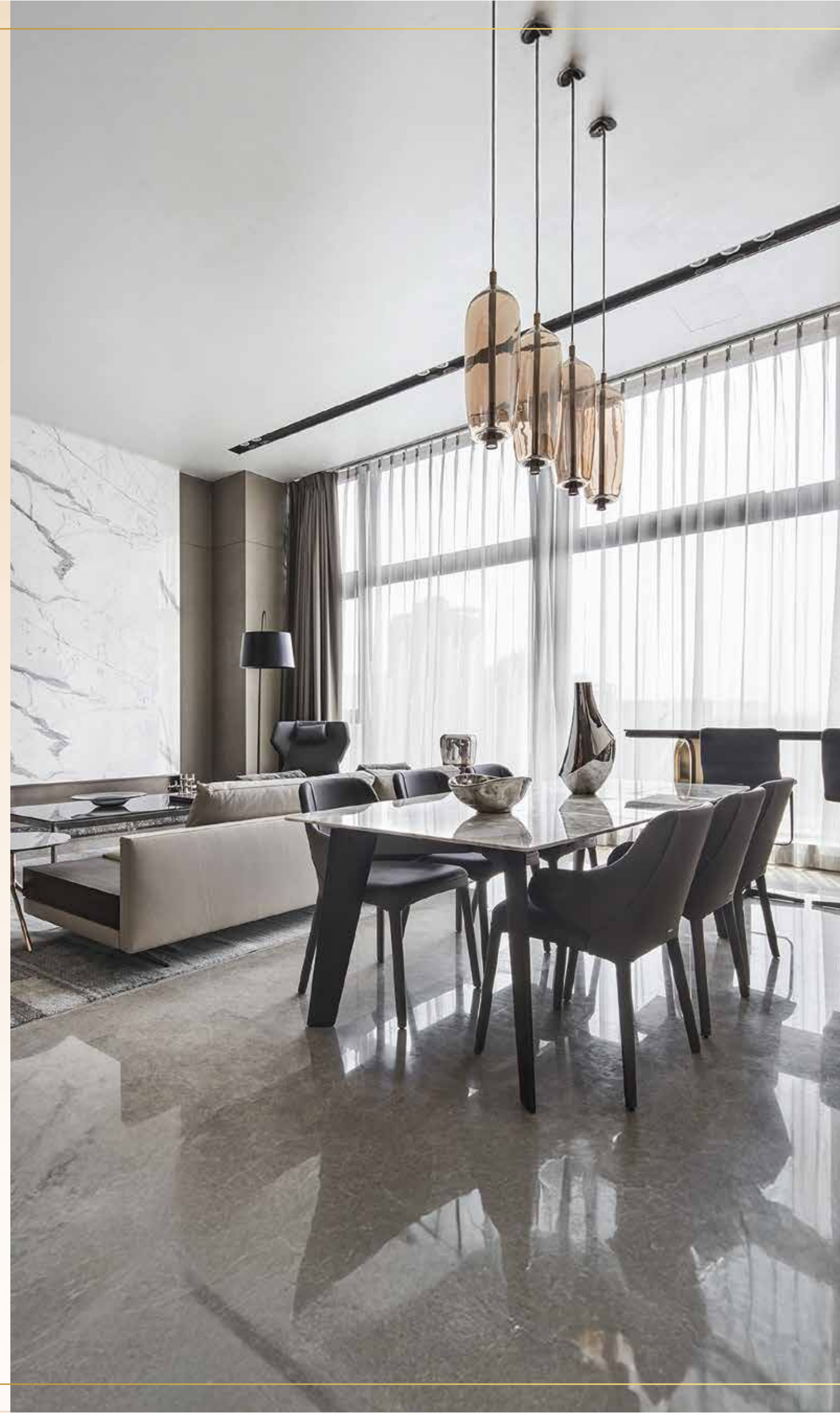
FLOORING

800 x 800mm Double Charged Vetrified tiles for living bedroom dinning kitchen & Kitchen. 2" x 2" Anti Skid Tiles for Balcony & Utility.



TOILET

Jaguar or equalvalent bath fittings in each toilet. 2 x 2 anti skid finished tiles flooring and 2 x 4 ceramic glazed finished tile dado upto 7" height . Wash basin in all toilets, provision for exhaust fan.



PLUMBING

Astral / Tru flow CPVC CP fittings with Jaguar / Parryware sanitary fittings.



PAINTING

2 Coats of Birla Putty, One Coat of primer & Two Coats of Premium Emulsion for internal walls. Apex Matt finish for external walls.



ELECTRICAL

Concealed Finolex / Anchor copper wiring with Anchor Roma Modular Switches for lighting Fan, Geyser, Exhaust Fan, A/C point in Bedrooms & Geyser with seperate circuits.



LIFT

3 lifts- 2 passenger and 1 service lift



GENERATOR

Generator back-up for each flat, lift, motor & common area lighting.