



HYBRID HOMES

NEUE

BENGALURU

Strategic Partner



Defining Primus Living

At Primus, the focus is on nurturing a community of extraordinary, motivated individuals who understand the vitality one draws from the community.







Community

A home represents more than just a financial investment, it embodies a lifestyle that resonates with your personal values.

Collaborative living and community bring a sense of richness and fulfillment to life.



Intuitivity

Impeccable design enhances your lifestyle by prioritizing the user experience, and creating homes that are versatile and functional.

It elevates a house into a living space that evolves alongside you.



Contemporary

Indulge in a home that is meticulously designed to cater to your every sensory need. Every aspect, from the carefully chosen lighting options to the thoughtfully selected materials, has been curated to create a truly bespoke experience for you.

Neue Bengaluru

Bengaluru is a melting pot of varied skills from throughout the nation as it welcomes contributors to the startup ecosystem. Only determination and vitality unite people from varied backgrounds and life paths.

The concept of Neue Bengaluru is to create an amazing community that lives, breathes similar values, and creates individuals' success stories!



SAKRA
WORLD HOSPITAL
JV by SECOM & TOYOTA TSUSHO, JAPAN

VARTHUR

BELLANDUR

PVR
CINEMAS
Spirit Mall

RMZ ECOWORLD

Outer Ring Road

Outer Ring Road

ManipalHospitals
LIFE'S ON

wipro

Towards Varthur

HSR LAYOUT

Haralur Road

VIBGYOR
HIGH

NPS East

RGA

Sarjapur Road

DECATHLON

**GREENNESTO
PRIMUS**

Primus School

wipro

NARAYANA
OLYMPIAD SCHOOL

Punarjant
Integrated
Health Care

Doddamara Road

HUSKUR

Delhi Public School

Hosur Road

Hosa Road

Hosa Road

Gattahalli Road

Rayasandra Road

ELECTRONIC CITY
PHASE I

ELECTRONIC CITY
PHASE II

Huskur Road

Nice Road

Connectivity

Sarjapur Road : 2 Km

Outer Ring Road : 6 Km

Bellandur : 7 Km

Electronic City : 7 Km

HSR : 8 Km

Shopping Centres, Malls, Leisure

Sarjapur Social : 3 Km

Decathlon : 4 Km

Play Arena : 4 Km

Market Square Mall Sarjapur Road : 5 Km

Total Mall : 5 Km

Soul Space Spirit Centro Mall : 6 Km

The Fisherman's Wharf : 6 Km

IT Companies/ Techparks

RGA Techpark : 4 Km

Wipro Limited : 4 Km

Wipro Technologies : 4 Km

RMZ Ecoworld : 7 Km

Prestige Tech Park : 7 Km

Health Care Facilities

Punarjani ENT Centre : 1 Km

Belenus Champion Hospital : 4 Km

Doctor Levine Memorial Hospital : 5 Km

Motherhood Hospital : 5 Km

BN Speciality Hospital : 5 Km

Kshema Hospital : 5 Km

Manipal Hospital : 6 Km

Sakra Hospital : 7 Km

Schools & Colleges

Primus Public School : Opposite Side

Prakriya Green Wisdom School : 350 mtrs

National Public School East : 1 Km

Orchids The International School : 5 Km

St. Patrick's Academy : 5 Km

Narayana Olympiad School : 6 Km

VIBGYOR High School : 7 Km

Samsidh Mount Litera Zee School : 7 Km

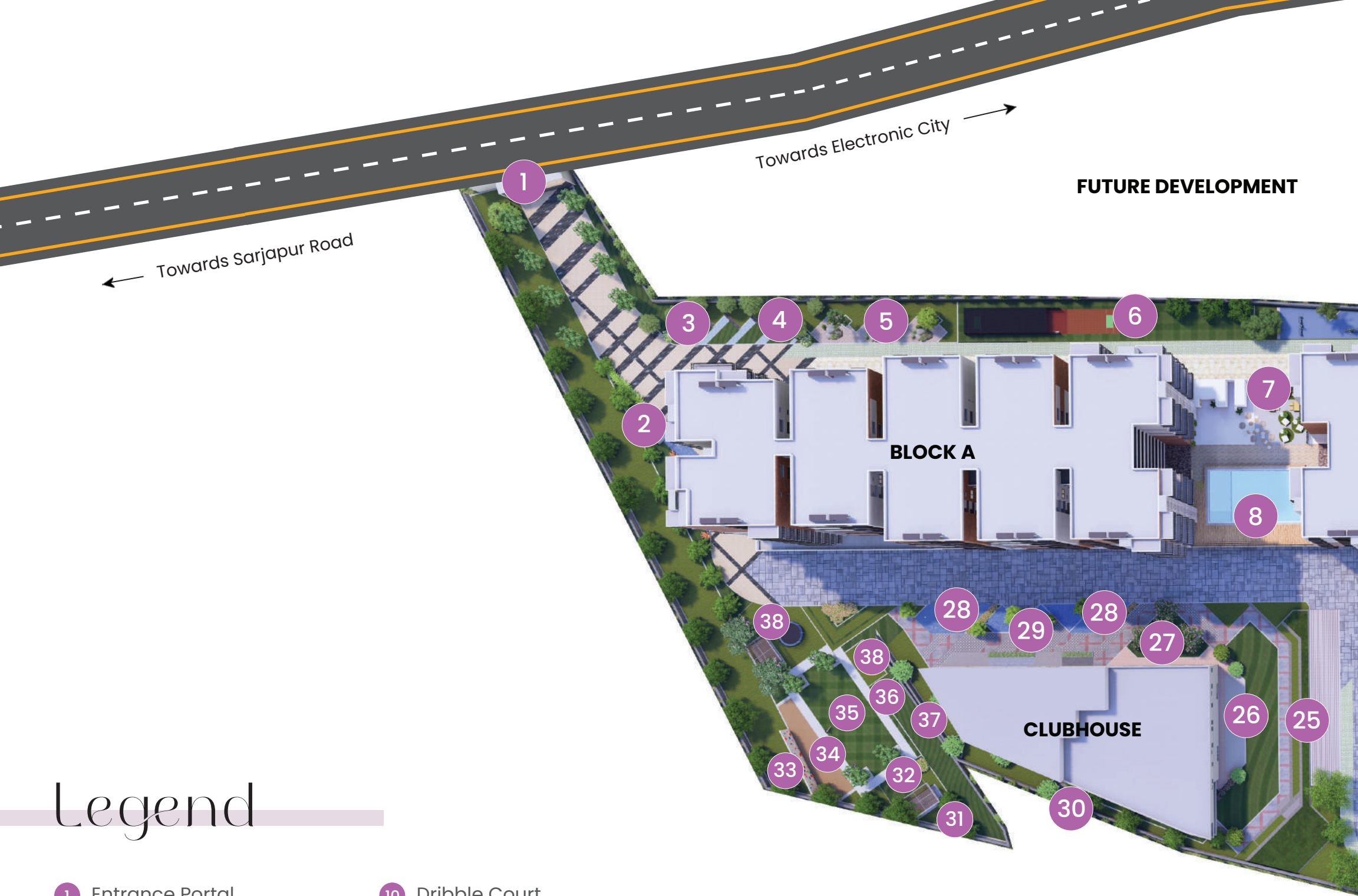
Delhi Public School : 7 Km

Gnan Srishti School Of Excellence : 10 Km

EuroSchool HSR : 10 Km

Lawrence High School : 11 Km

Greenwood High School : 11 Km



Legend

- | | | |
|------------------------------|---------------------------|-------------------------------|
| 1 Entrance Portal | 10 Dribble Court | 19 Fruit Orchard |
| 2 Entrance Water Feature | 11 Elders' Pavilion | 20 Chit Chat Zone |
| 3 Entrance Waiting Bay | 12 Kids' Play Area(5-12y) | 21 Aroma Garden |
| 4 Floral Garden | 13 Skating Rink | 22 Giant Chess |
| 5 Zen Garden | 14 Tot Lot on EPDM | 23 Pet Park |
| 6 Cricket Net/Practice Pitch | 15 Game Wall | 24 Walking/JoggingTrack |
| 7 Seating Area | 16 Tot Lot on Lawn | 25 Amphitheatre |
| 8 Swimming Pool | 17 Multipurpose Court | 26 Multipurpose Lawn |
| 9 Outdoor Gym | 18 Viewing Gallery | 27 Accent Tree Court |
| | | 28 Interactive Water Fountain |
| | | 29 Central Water Feature |
| | | 30 Outdoor Cafeteria with BBQ |
| | | 31 Meditation Pavilion |
| | | 32 Senior Citizens Corner |
| | | 33 Climbing Wall |

Master Plan



- 34 Sandpit
- 35 Yoga/Aerobics Lawn
- 36 Reflexology Pathway
- 37 Creche Spillover
- 38 Trampolin Park



Perks of Primus Living

Amenities aren't checking boxes; they're ways of life that should complement the kind of life you want to create for your loved ones. Our primary facilities are designed to nurture the core values of belonging and advancement as individuals



Kyokan

Clubhouse

(Under Planning - Part of Phase II)

Primus provides an opulent 21,500 sq.ft. clubhouse, complete with top-notch amenities for a contemporary lifestyle. The property boasts an exquisite rooftop infinity pool, top-of-the-line gym facilities, and a generously sized party hall. In addition, residents can enjoy a variety of entertainment options with both covered and open party areas.



Indoor Amenities

Step into Primus and indulge in a world of lavish comfort and entertainment. The elegantly designed lounge radiates an air of refinement, perfect for hosting social events. Indulge in rejuvenating treatments and therapies that will leave you feeling pampered and refreshed. Children can enjoy their own dedicated play area, while the game room offers a variety of recreational options for people of all ages.

Primus Club House is a relaxing retreat featuring a spa and salon. Residents can host parties in two flexible party halls, making it easy. They can also watch movies in the mini theater. Leisure activities include a well-stocked library and a fully equipped gym.

Squash Court

Embark on exhilarating matches within our cutting-edge squash court, offering an unparalleled experience of intensity



Badminton Court

Serve up the adrenaline and smash your way to victory on our indoor badminton court, where exhilarating rallies and friendly rivalry await





Gym

Discover a fitness journey like no other in our meticulously designed gymnasium, tailored to fulfill all your workout needs



Two Pools

Dive into tranquility at our twin pools, providing a serene escape for relaxation and rejuvenation

Indoor Games Area

Engage in a plethora of recreational activities within our sophisticated indoor games area, catering to guests of every age



Spa & Salon

Immerse yourself in luxury at our spa & salon, where opulent treatments and services await your indulgence





Library

Unwind amidst knowledge and serenity at our tranquil library, offering a retreat for both mind and soul



2 Covered Party Hall

Elevate your events in our two elegant covered party halls, crafted to accommodate various occasions with unmatched extravagance



Mini Theatre

Escape into cinematic bliss at our exclusive mini theatre, where comfort meets entertainment in a welcoming atmosphere

3 Open Party Area

Indulge in the ultimate outdoor celebration experience with our spacious open party area, perfect for hosting festive gatherings beneath the vast expanse of the open sky



Reception

Indulge in a truly exceptional level of hospitality and impeccable service at our inviting reception, guaranteeing a flawless arrival and departure experience for all our esteemed guests



Retail Store

Discover a realm of convenience with our onsite retail store, presenting a thoughtfully curated assortment of must-haves and indulgences





Business Center

Enhance your productivity in our state-of-the-art business center, crafted to meet all your professional requirements



Conference Room

Indulge in an atmosphere of elegance and refinement in our exquisite conference room, complete with state-of-the-art facilities to ensure flawless meetings

Lounge Area

Indulge in the sophisticated atmosphere of our lounge area, perfect for unwinding and socializing in absolute comfort



Kitchen

Prepare gourmet meals in Primus' sleek, modern kitchen with cutting-edge appliances and attractive décor



5 Guest Bedrooms

Primus has five beautifully designed guest bedrooms where one can be in complete comfort and relaxation



Pantry

Indulge in the convenience of our well-stocked pantry, where you can effortlessly access a variety of snacks and refreshments to satisfy your on-the-go cravings



Bar Counter

Enjoy a selection of refreshing beverages and cocktails at our elegant bar counter, ideal for indulging in evening drinks





Outdoor Amenities

Everyone can find something that they like about Primus.

17 or more outside amenities are available for your enjoyment, regardless of whether you want to take it easy in our Zen garden or compete on our volleyball and half-basketball courts.

We have you covered.

Recreational Space

Immerse yourself in nature's embrace, where recreational and leisure areas intersect under the Primus sky





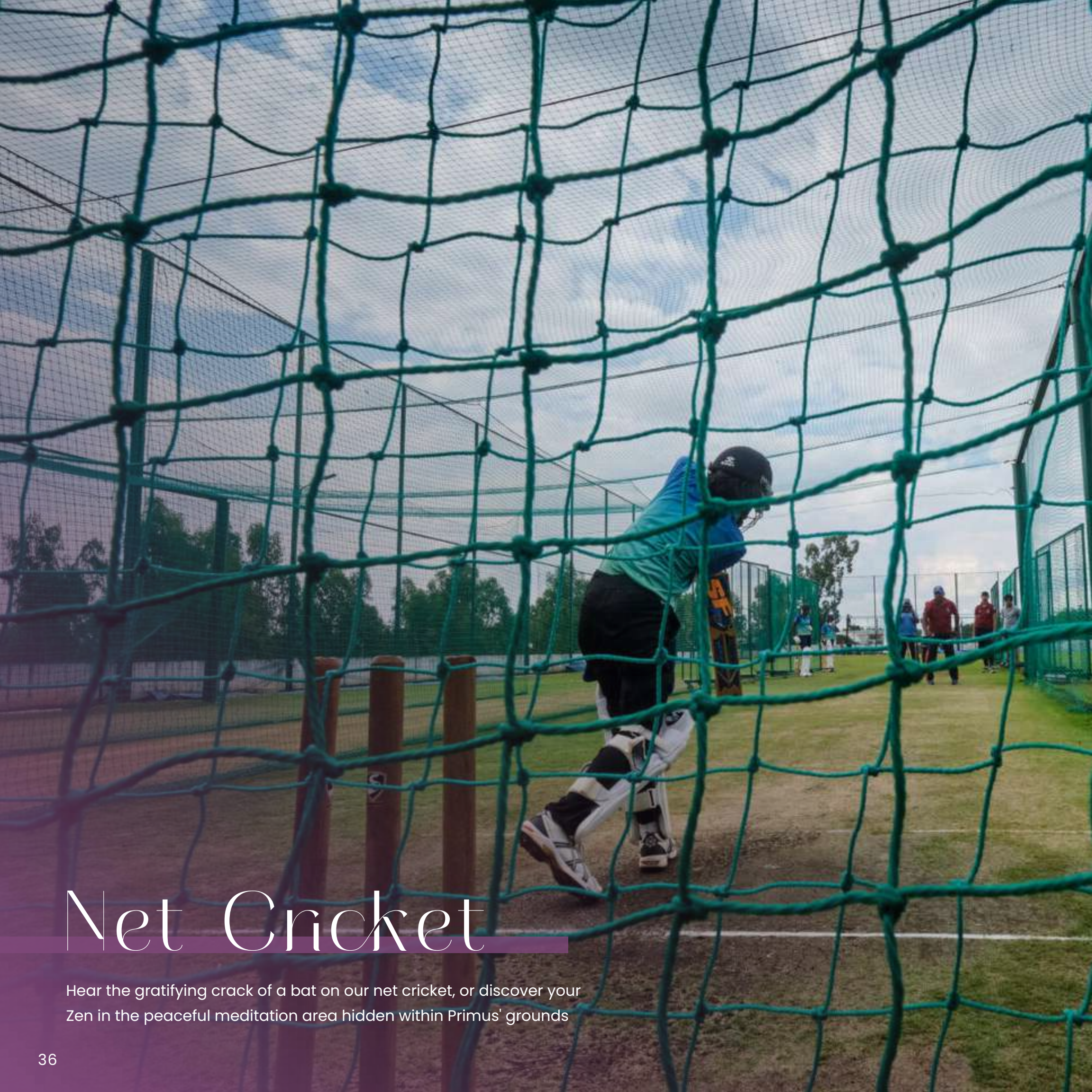
Open Gym

Unleash your inner athlete in our open gym, or simply rest in the tranquil lounging areas amidst lush nature

Seating Space

Relax and unwind in our inviting seating areas, where moments of peace and renewal await among Primus' outdoor splendor





Net Cricket

Hear the gratifying crack of a bat on our net cricket, or discover your Zen in the peaceful meditation area hidden within Primus' grounds

Meditation Space

Discover inner serenity in our beautiful meditation place, where tranquillity surrounds you in Primus' indoor hideaway





Walking/Jogging Track

Take thoughtful strides along our indoor walking track, where each circuit provides renewed energy and well-being while enjoying the comfort of Primus' indoor facilities

– Gathering Space

Take a leisurely stroll down winding roads or join with friends and family in our comfortable gathering areas, where memories are built under the open sky



Campfire Space

Enjoy pleasant evenings under the stars at Primus' friendly campfire area, which promotes unforgettable gatherings and heartfelt chats





Kids' Play Area

Allow laughter to resonate through the air as children enjoy our bright play area, while a calm pond pavilion adjacent invites quiet introspection



Leisure Space

Escape to leisurely serenity in Primus' expansive leisure zone, where every moment is a peaceful refuge beneath the open sky



Fruit Garden

Nurture your soul amidst the lush greenery of our fruit garden retreat



Zen Garden

Primus' Zen Garden is a haven of peace despite the hectic outdoor environment

Pets Corner

Spoil your furry pals at the pet area, or glide effortlessly across our skating rink; fun awaits at every step in Primus' vast clubhouse



Giant Chess

Primus' outdoor chess area provides a peaceful backdrop for brain stimulation and casual competition





Skating Rink

Glide into infinite fun on Primus' vast skating rink, where laughter and excitement thrive under the open sky



Multipurpose Court

Our multipurpose court allows you to shoot hoops or practice your backhand. A game of basketball or badminton as you please



Dribble Court

Shoot hoops and create memories on our dribble court, where the excitement of the game blends with the beauty of outdoor enjoyment



Climbing Wall

Stretch those limbs and those limits. Conquer your greatest heights with the climbing wall on premises, before you head out to the rocks



Amphitheatre

Celebrate occasions, put up a street play or host a community gathering under open skies at our outdoor amphitheatre

Project USP's



Ultra Luxury Homes

2, 3 BHK luxury apartments,
and 3 BHK duplexes



Prime Location

Situated in Kodathi,
Off Sarjapur Road



Great Connectivity

Just 2 km from Sarjapur Road,
with excellent access to tech hubs



Established Market

Well designed area with tech park,
schools and signature townships



High Rise Building

B+G+10 high-rise towers offer mesmerizing views



Eye Pleasing Landscape

Sprawling open spaces with 70% green cover



35+ Amenities

A wide range of amenities to engage residents of all ages



Rooftop Infinity Pools

A luxurious infinity pool on the clubhouse rooftop





GREENNESTO
Sustainable Living

Specification's

Structure

- R.C.C Frame With Columns and Beams Designed for Earthquake Resistance (Seismic Zone-II).
-

Masonry

- External: 6" Solid Blocks.
 - Internal : 4" Solid Blocks.
-

Plastering

- Internal & External : Plastering using M-Sand.
-

Windows/Sliding Doors

- 2½ track UPVC Sliding windows with provision to add/install Mosquito Mesh.
-

Balcony & Staircase Railing

- MS Railing
-



Doors

- **Main Door Frame** : Best Quality Teak wood frame with melamine/polish.
- **Main Door shutter** : Both Side veneer shutter with melamine/polish.
- **Hardware** : Safety Lock, SS Handle, Door Eye, Tower Bolt and Magnetic Catcher.
- **Bedroom doors** : BWP grade flush doors with Sal wood/Hard wood frame.
- **Bathroom doors** : BWP grade flush doors with Sal wood/Hard wood frame.
- **Hardware** : Cylindrical lock with key, Door Stopper and Door Bush
- **Hardware** : Cylindrical lock without key, Door Bush
- Europa Hardware.



Flooring

- **Living, Dining, Kitchen** : 600 X 1200mm Double Charged Vitrified Tiles
- **Bed Rooms** : 600 X 1200mm Double Charged Vitrified Tiles.
- **Balconys, Utility, Toilets Flooring** : Antiskid Ceramic Tiles.
- **Toilet** : Glazed Finished wall Tiles up to 7'.0" height.
- **Basement flooring** : VDF Flooring.
- **Terrace** : Brick bat coba Finish over Waterproofed Base
- **Staircase** : Finished in Granite/Equivalent Tile.
- **Lift Lobby & Common area** : Combination of Granite or Vitrified Tiles.



Kitchen & Utility

- Provision for Aqua guard/RO
- Provision for Geyser.
- Provision of Bibcock for Washing machine and One Angle Cock at Utility.
- Facilitate Gail Gas Installation(As Per Gail Gas Company Terms And Conditions)



Plumbing & BWSSB

- Chromium Plated (CP) and sanitary ware of Kohler/Equivalent.
- Wall-Mounted EWC with flush valve.
- Provision for Geyser in all toilets.
- Facilitate Cauvery water connection to the Apartment.
- Based on availability and subject to payment to builder based on The BWSSB Terms & Conditions.
- Kohler/Equivalent.



Electrical & Communications

- Fire Resistant Copper wires and Modular Switches.
- BESCO Power: 3.5 KW Power for 2 BHK and 5 KW Power for 3 BHK.
- 100% Generator back-up for common area and 1kv for each flat.
- Telephone & Data Point in Living area, TV Point in Living and Master Bedroom.
- Provision for few car charging points in basement.
- EV Charging Point (On Customer Request)



Common Area Flooring

- IPS Flooring in basement & ground floor car parking area.
- Granite flooring in first floor corridor & lobbies.
- Granite flooring in lobbies of ground and basement floors.
- Vitrified tiles flooring in corridors & lobbies in upper floors vitrified tile & granite combination cladding for lifts entrance wall & other applicable areas.
- Vitrified tile flooring in clubhouse, party hall & indoor games area.
- Granite/Kota Stone/ cement tile flooring & riser for staircase area.



Painting

- Internal walls : premium emulsion paint.
 - External walls : Weather-proof exterior Emulsion paint.
 - Enamel painting for grills & railings as per architectural design.
 - Asian Paints/Equivalent.
-



Security

- Provision for sophisticated round-the-clock security system.
 - Panic button and intercom is provided in the lifts.
 - Surveillance cameras (CCTV) at strategic locations.
-



Lifts

- 6 nos. of passenger elevator of Kone/Equivalent.
 - Service elevator of Kone/Equivalent.
-



Structure & Walls

- Basement + Ground + 10 floors RCC framed structure with concrete block masonry walls.
-

Parking

- Covered car parking in basement & ground floor.
-

Lifts

- Passenger and Service elevator.
-

Swimming Pool

- RCC walls & floor finished with waterproof plastering & tiles.
-

Clubhouse

- Double-height Lobby with Meeting Rooms, Gents Gym, Ladies Gym, Yoga Hall & Indoor games.
-

Children Play Area

- Slides, Swing, See-saw (double), Merry-go-round, Soccer, Half Basketball Court, & Park Bench.
-

STP & Sumps

- RCC walls & floor finished with waterproof plastering.
-

Security System

- Peripheral area & entrance gate is equipped with CCTV cameras for surveillance.







Greennesto headquartered in Bengaluru was born as an extended vision and passion for eco-conscious habitat which promotes environmental, aesthetic and organic living spaces.

We are an expert team of creative minds from diverse academic and professional backgrounds instigated by a passion for creation, a commitment to community and the social responsibility of creating and maintaining healthy sustainable homes.

In the planning of an environmentally sustainable building, strong considerations are given to maximise the building's energy efficiently and reduce the energy expended throughout the construction process.



Greennesto 02

Project Type

Apartments

Location

Haralur Main Road, Bengaluru



Livespaces Symphony

Project Type

Apartments

Location

HSR Layout, Bengaluru





FWD Architects, with offices in Bengaluru, Hyderabad, Chennai, And Raipur, is a team of Young Architects, Interior Designers, and Project Managers with a sound background in the international building trends. At FWD sustainability along with economic feasibility has always been the pivot. With a lot of modern construction technologies flowing into the country with unprecedented requirements, FWD is standing up to the expectations of the clients in terms of providing an “easily marketable solution” along with the expected returns. The right mix of international trends, the requirements, the client’s expectations, and the site condition gives birth to the architecture fit for emerging India.

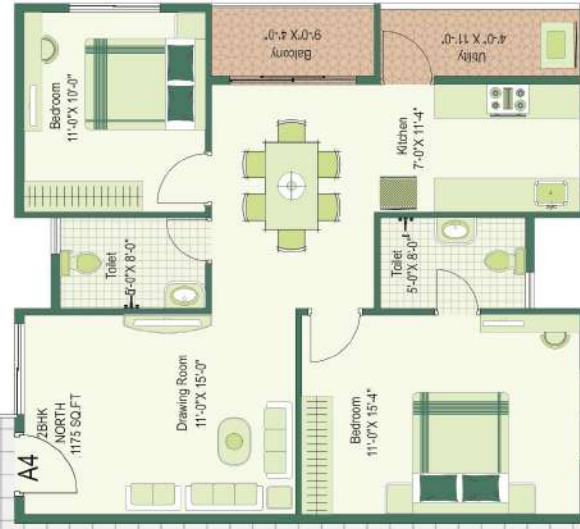
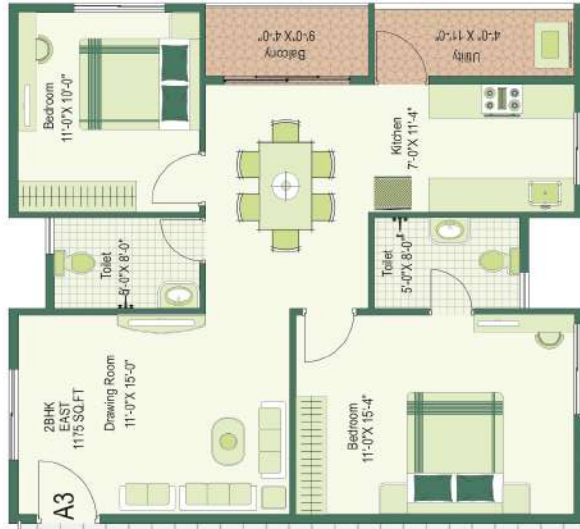
Nearly 13 years of Practice, FWD Architects has established a reputation for excellence in the designs of small and large scale Residential, Hospitality, Commercial and Institutional projects. A team of 40 professionals, we are still a hands-on, design-oriented firm at heart. Our identity lies in balancing the connection to the client, integrity in design, and well-organized work culture.

Site responsive design has always been a hallmark of our firm for a decade. We strive to honor the site with design solutions inspired by the vernacular ideology and the international know-how. We advocate sustainability with the right mix of profitable and practical design methodologies in all our projects.

Typical Floor Plans

Block A





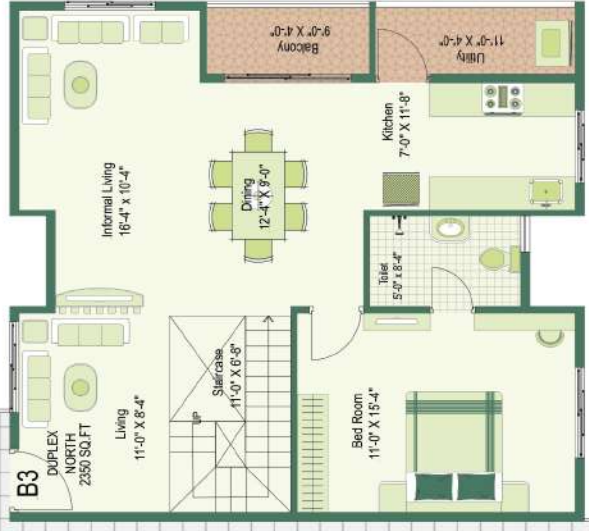
6'-0" Wide Corridor

6'-0" Wide Corridor

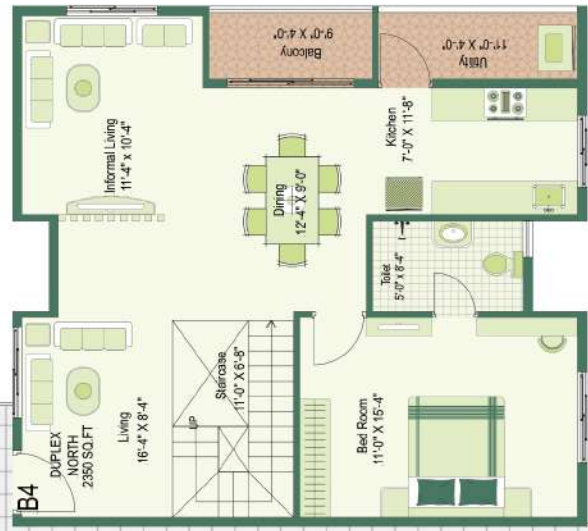
Typical Floor Plans

Block B

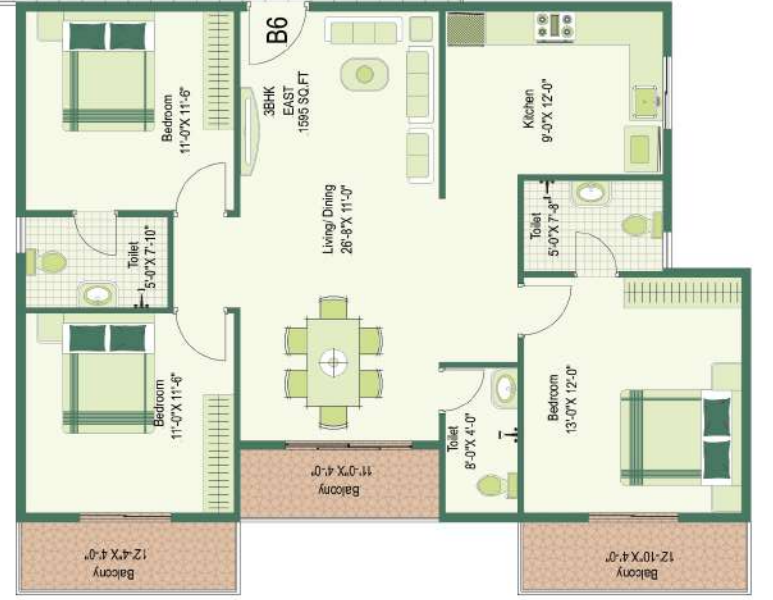




6'-0" Wide Corridor



6'-0" Wide Corridor





Artist's impression, Not an actual site photograph.

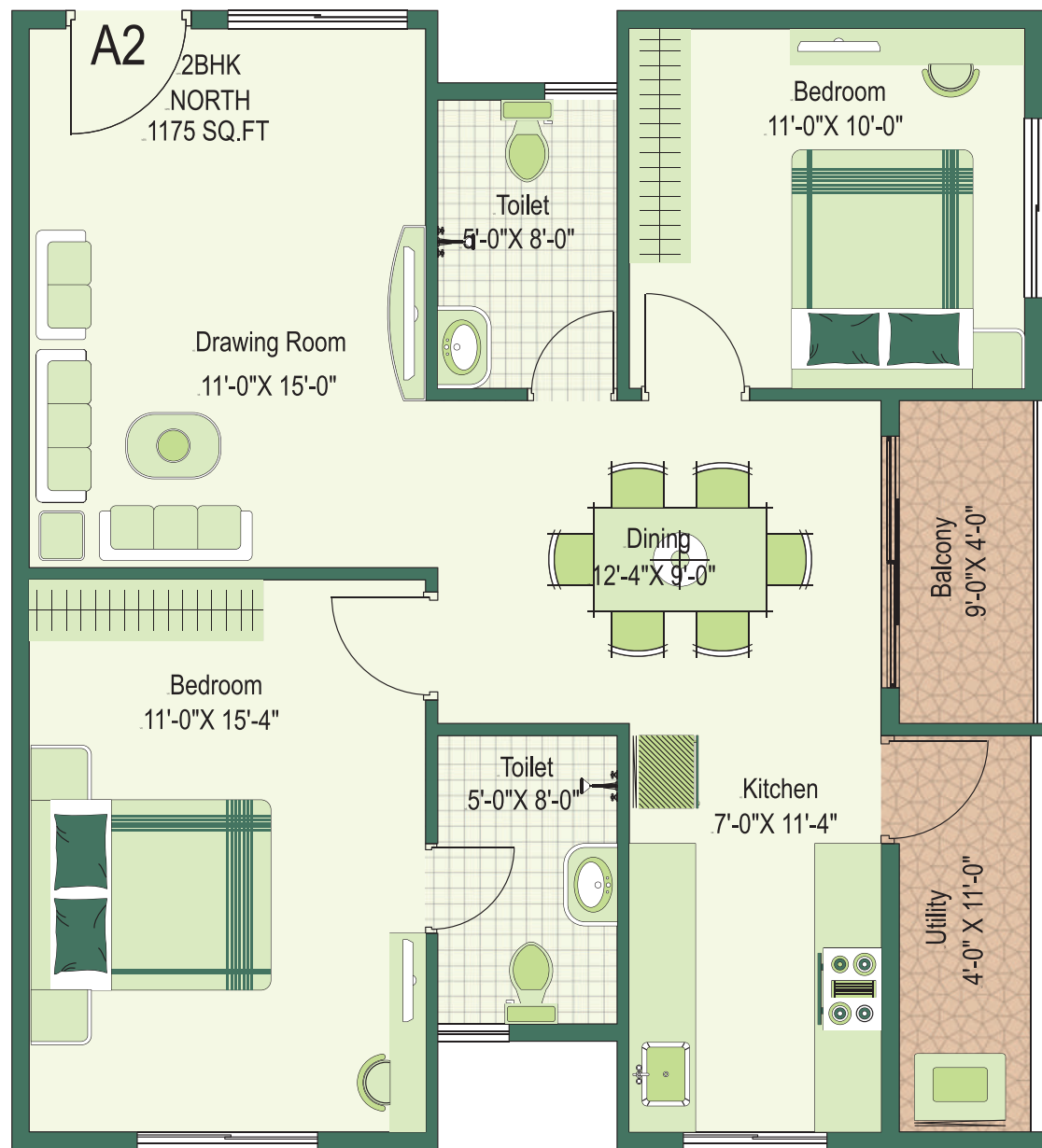
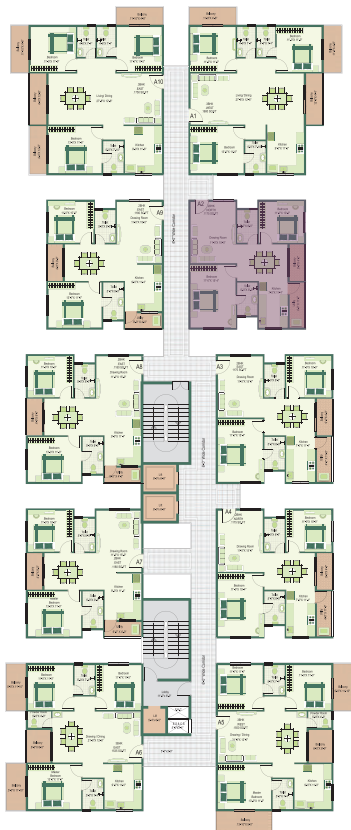
Typical Apartment

2BHK

North Facing



Salable Area
1,175 sq.ft.



The image shown with furniture/fitting fixtures including wash basin /washing machine are only indicative of space planning and is not part of developers scope. Main doors will be as per corridor.

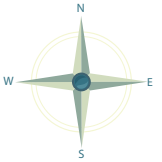


Artist's impression, Not an actual site photograph.

Typical Apartment

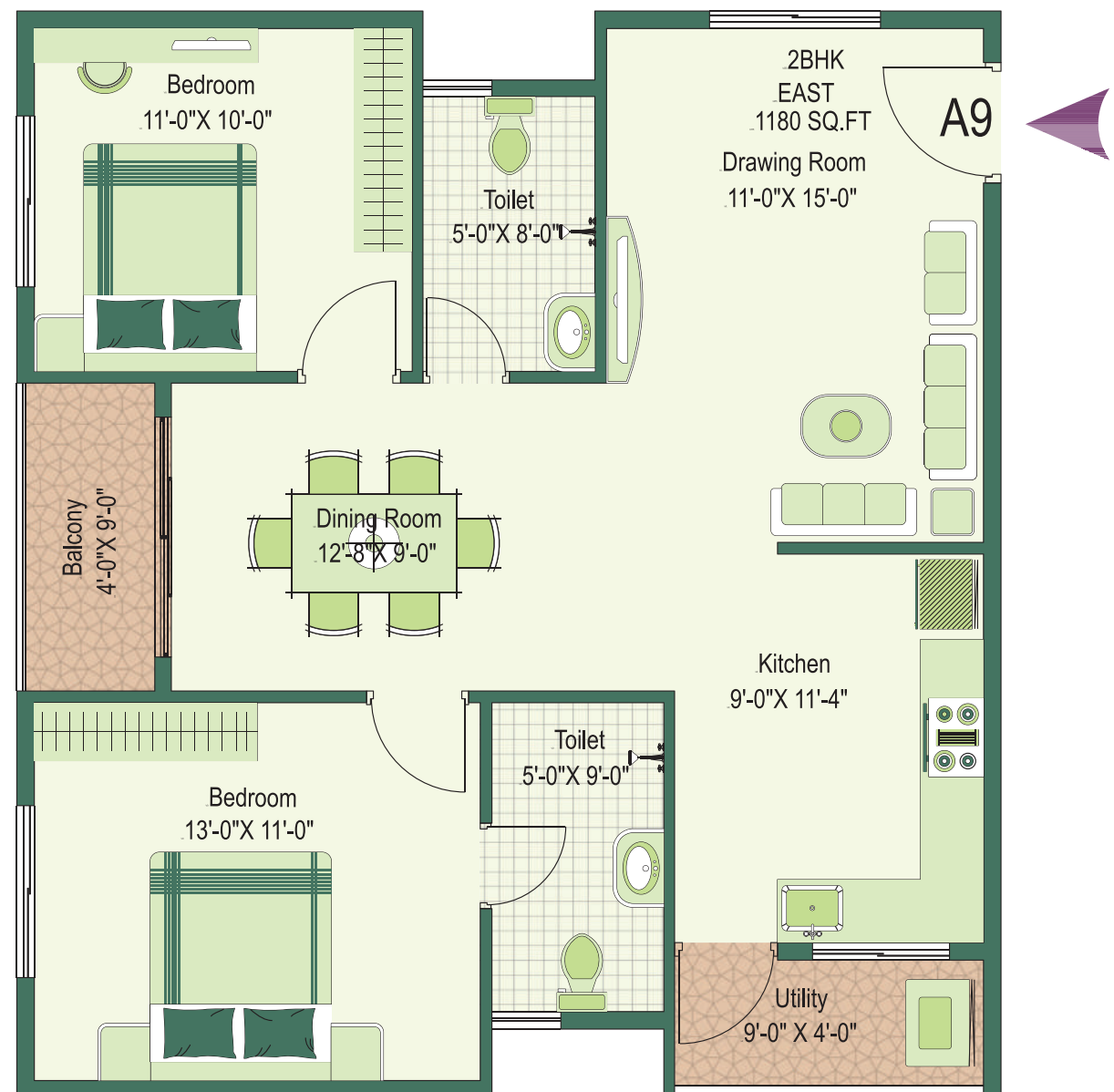
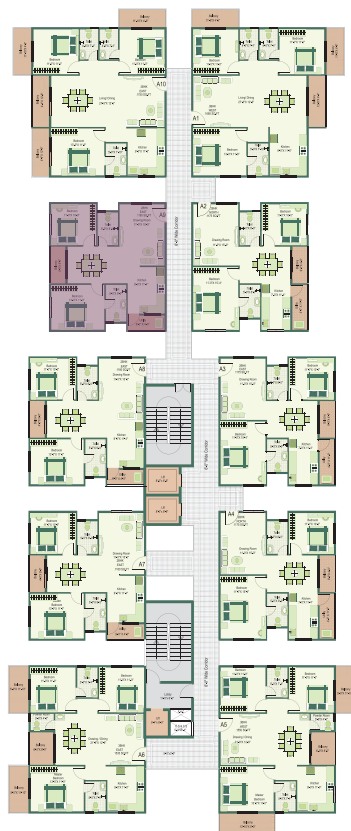
2BHK

East Facing

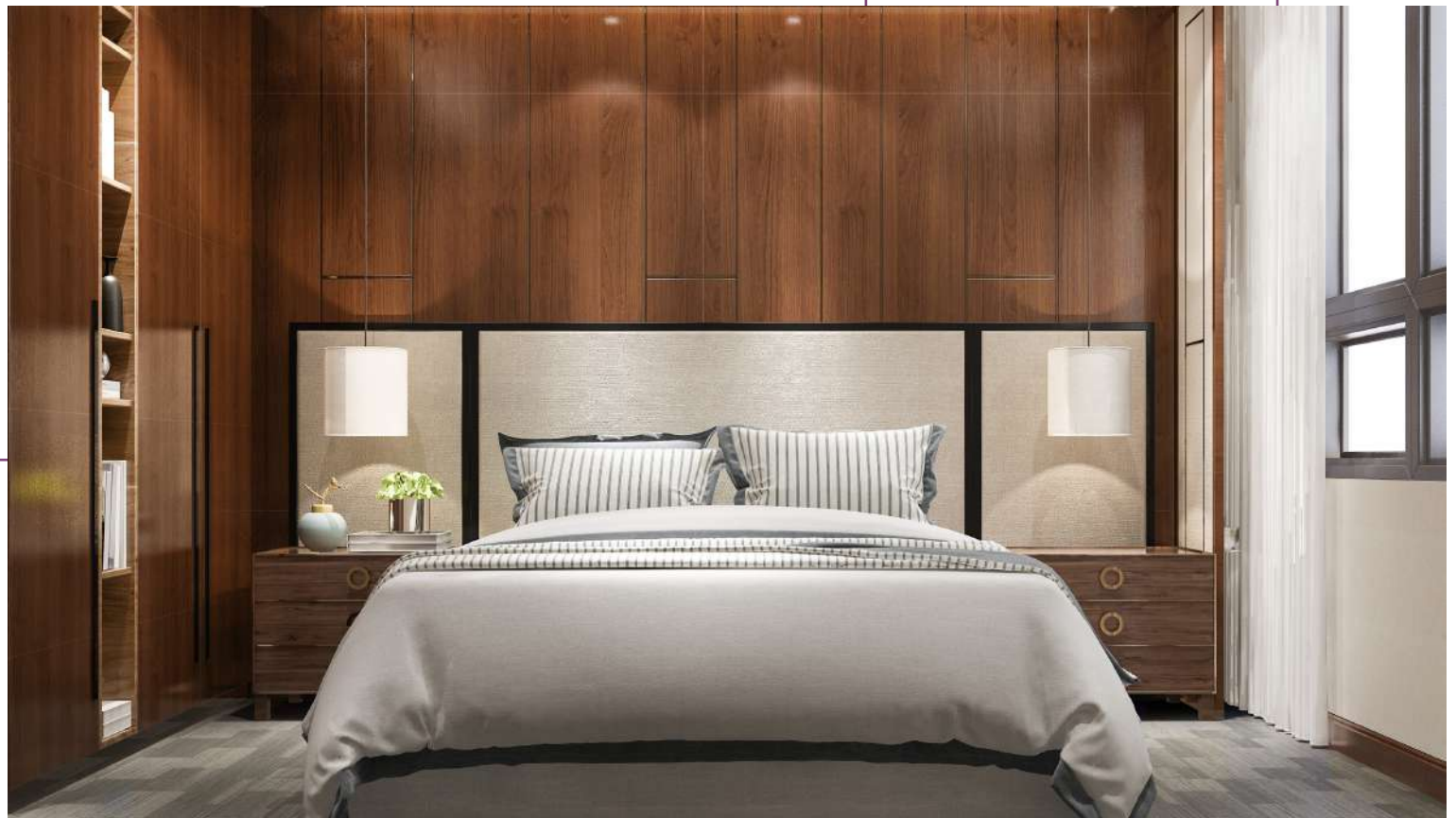


Salable Area

1,180 sq.ft.



The image shown with furniture/fitting fixtures including wash basin /washing machine are only indicative of space planning and is not part of developers scope. Main doors will be as per corridor.

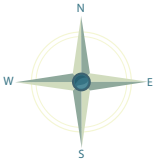


Artist's impression, Not an actual site photograph.

Typical Apartment

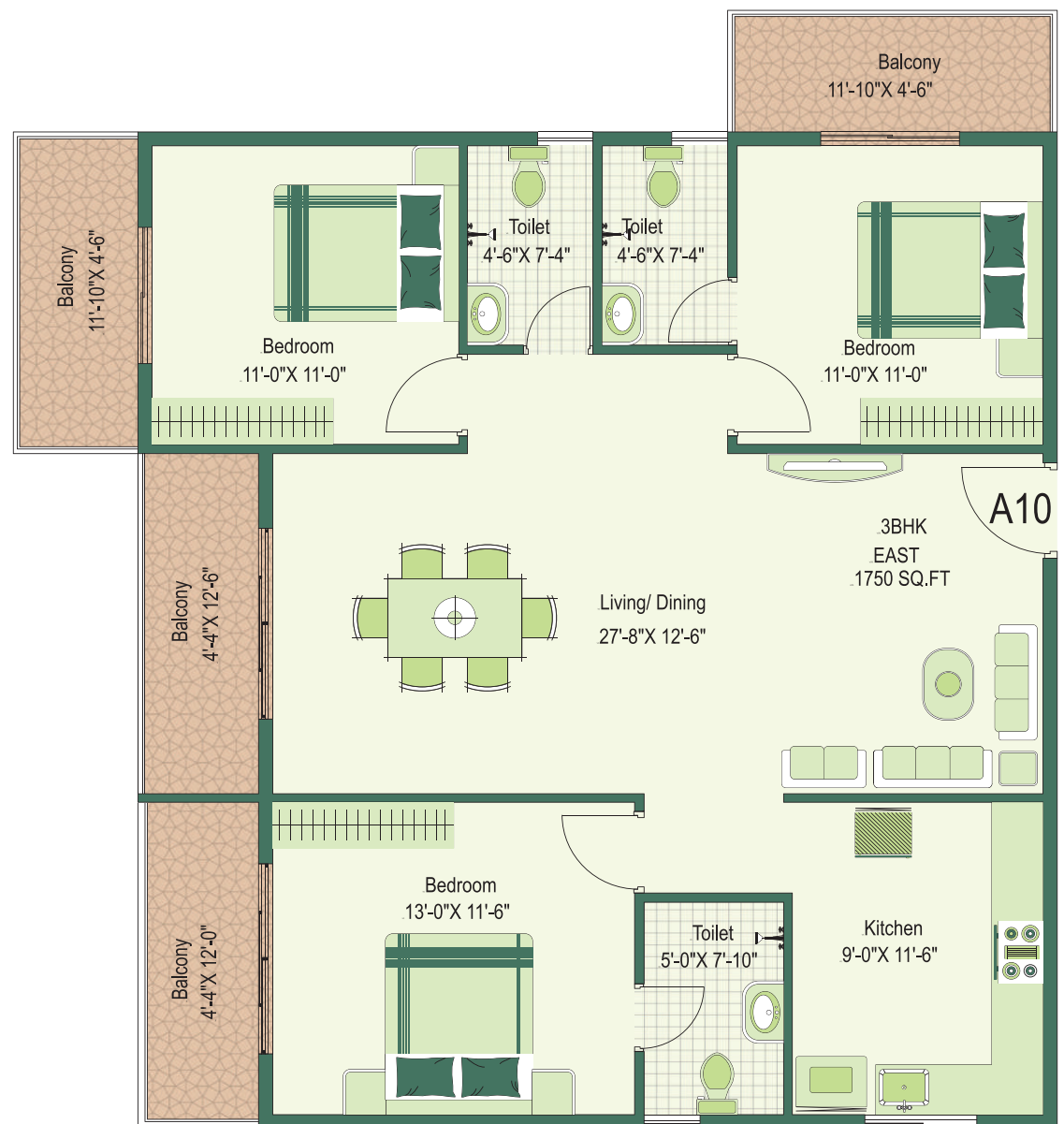
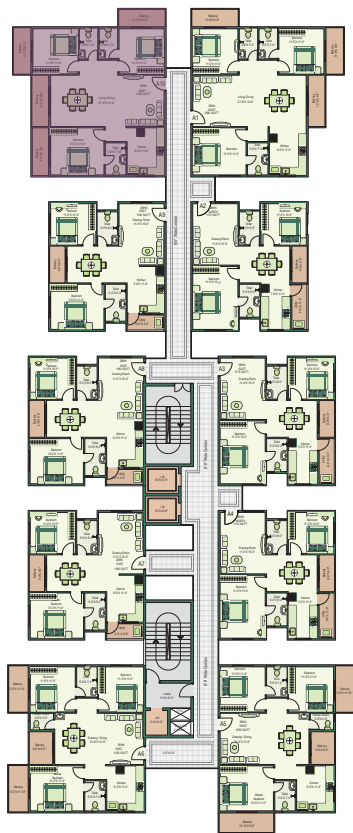
3BHK

East Facing

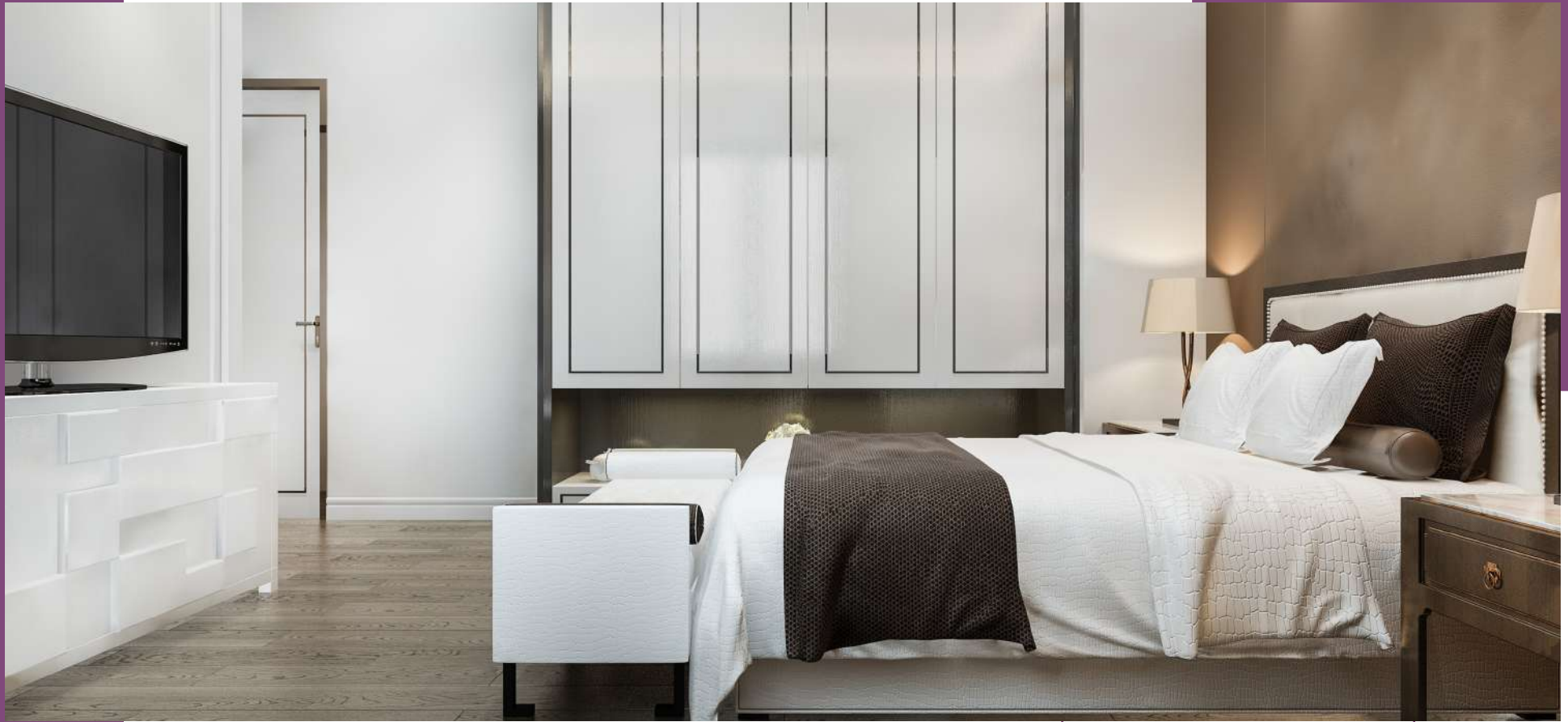


Salable Area

1,750 sq.ft.



The image shown with furniture/fitting fixtures including wash basin /washing machine are only indicative of space planning and is not part of developers scope. Main doors will be as per corridor.

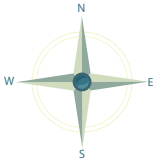


Artist's impression, Not an actual site photograph.

Typical Apartment

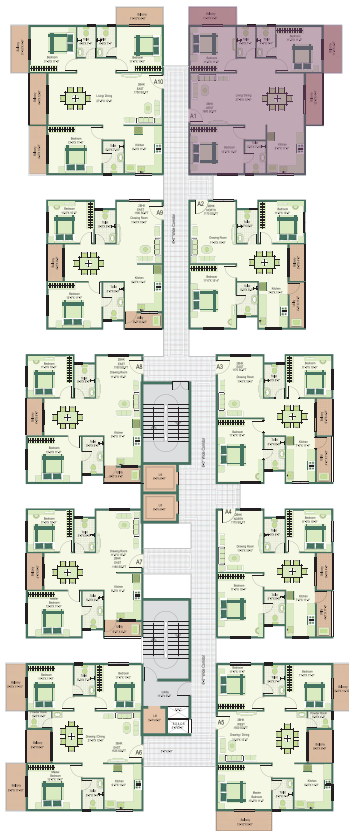
3BHK

West Facing



Salable Area

1,680 sq.ft.



The image shown with furniture/fitting fixtures including wash basin /washing machine are only indicative of space planning and is not part of developers scope. Main doors will be as per corridor.

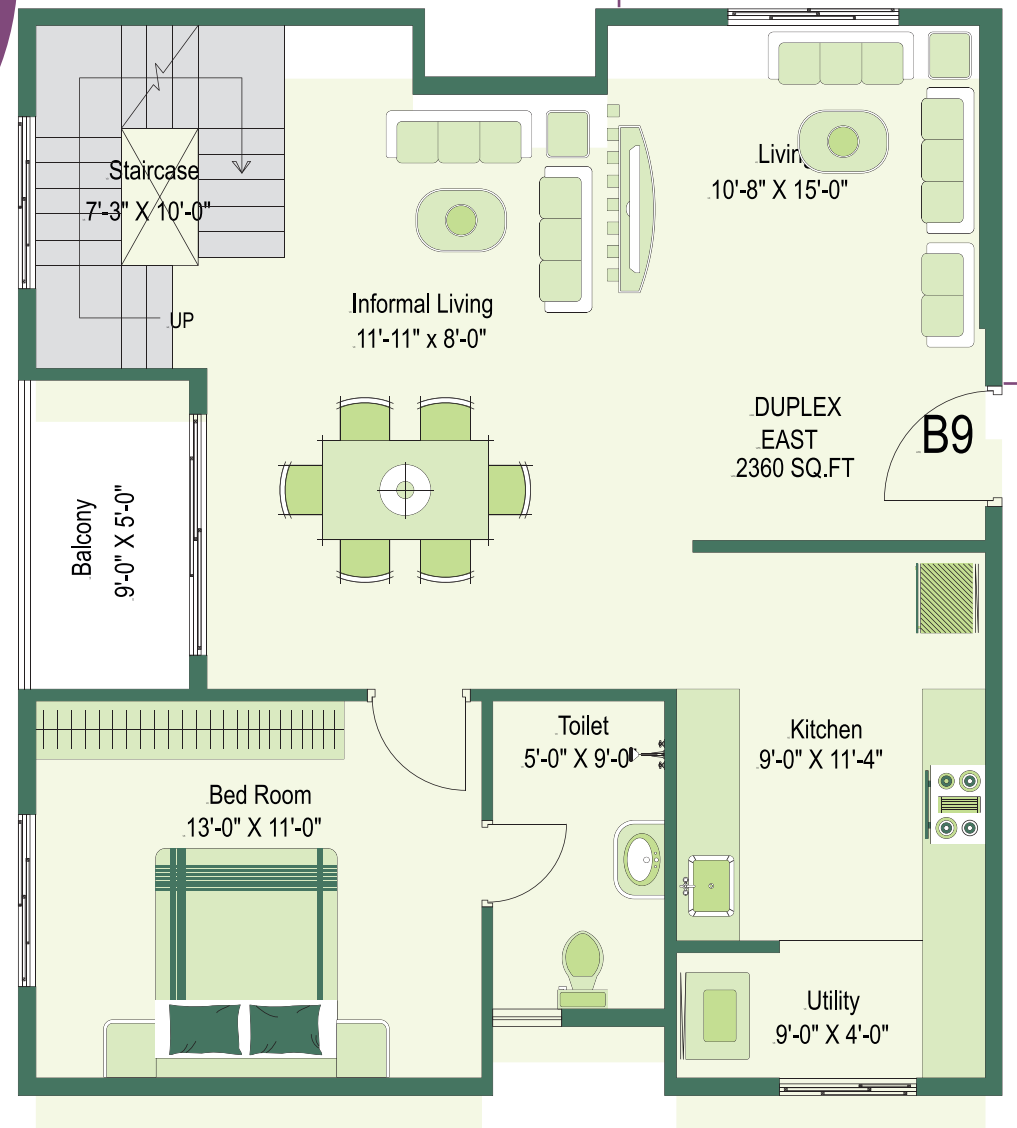
Typical Duplex

3BHK

East Facing

Salable Area

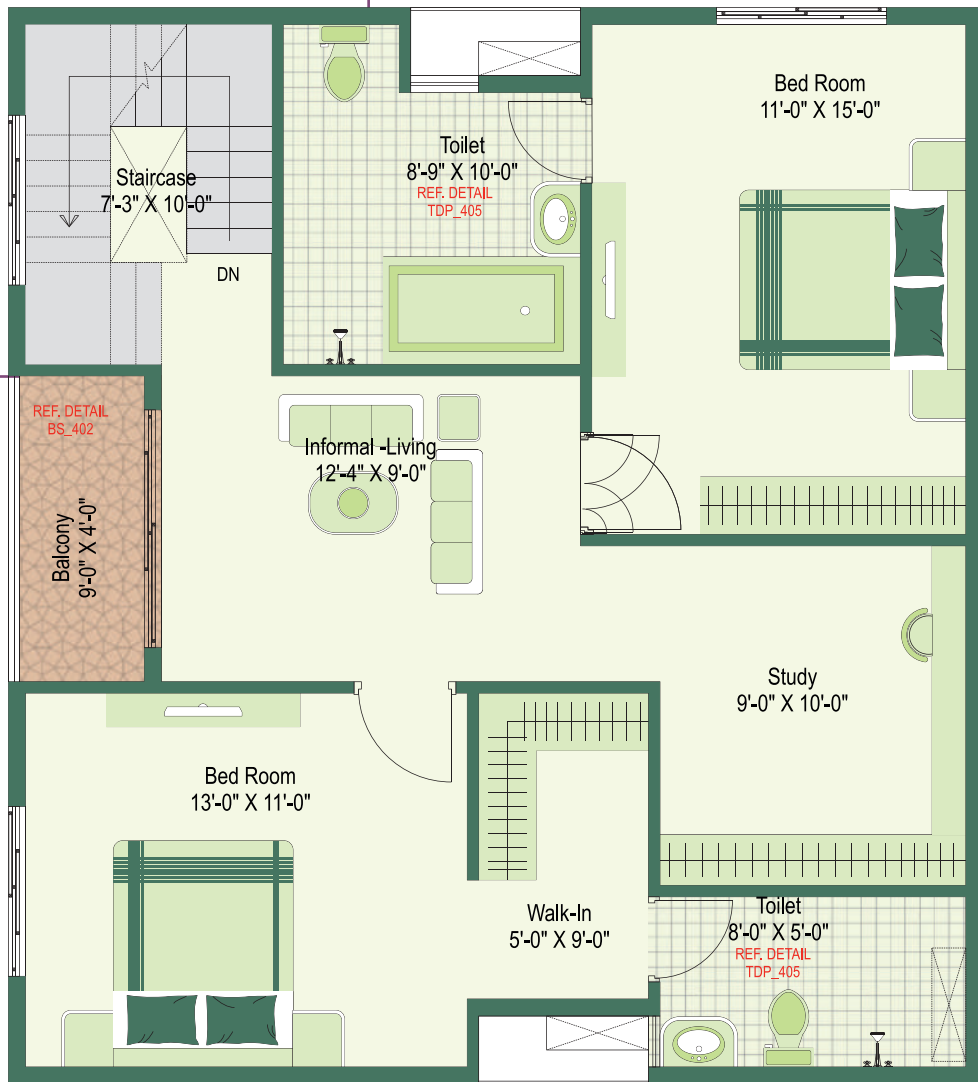
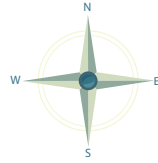
2,360 sq.ft.



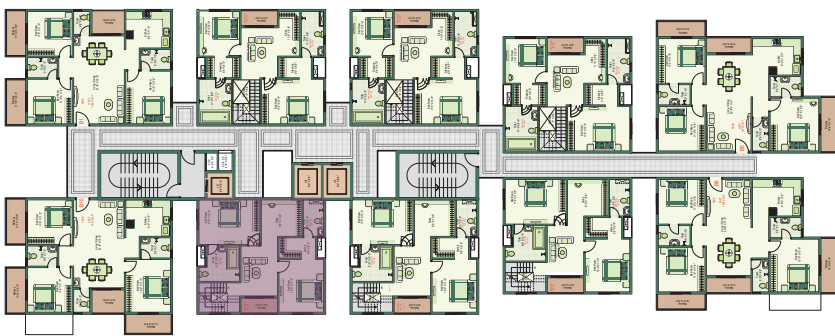
Lower Floor



Artist's impression, Not an actual site photograph.



Upper Floor



The image shown with furniture/fitting fixtures including wash basin /washing machine are only indicative of space planning and is not part of developers scope. Main doors will be as per corridor.

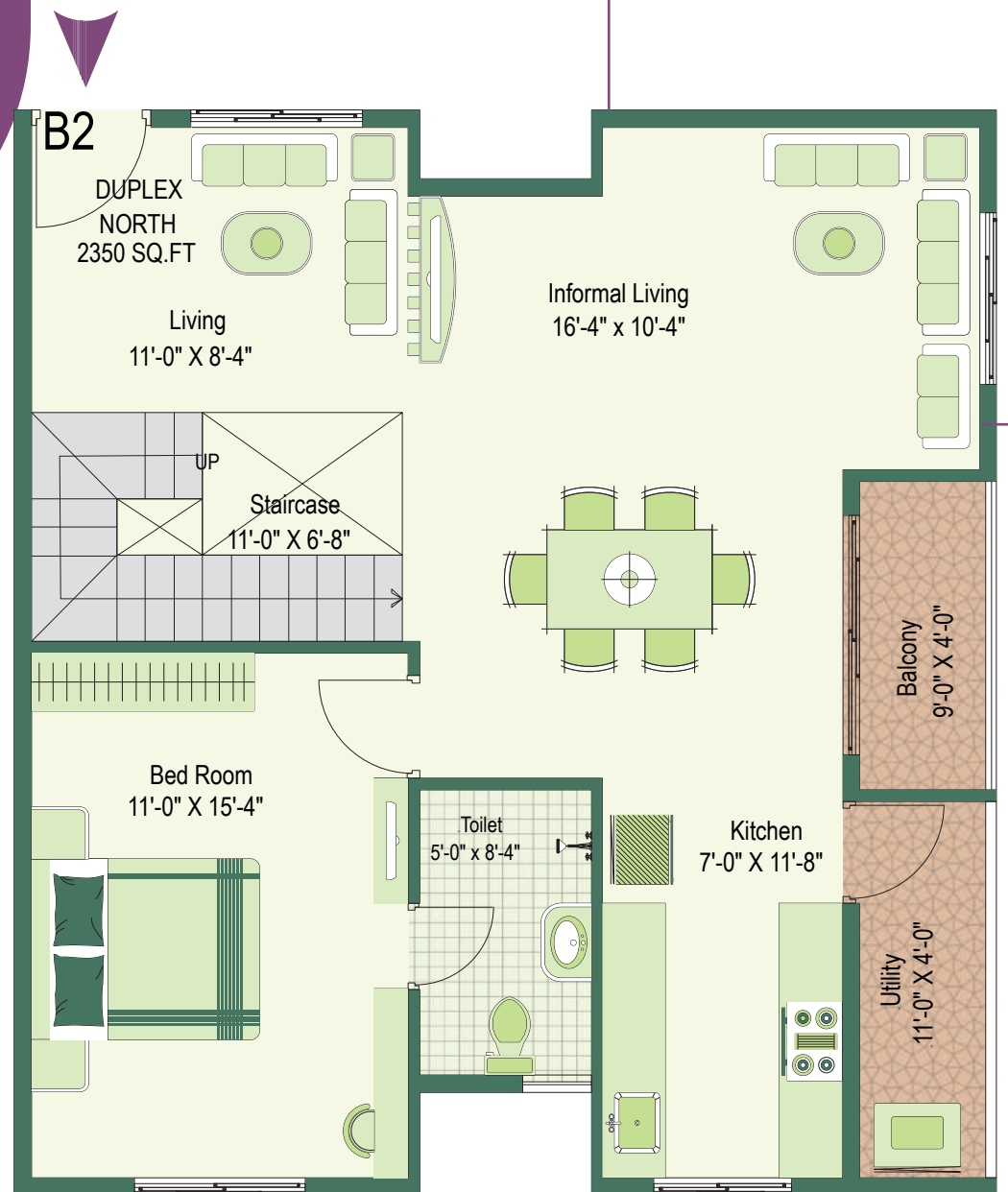
Typical Duplex

3BHK

North Facing

Salable Area

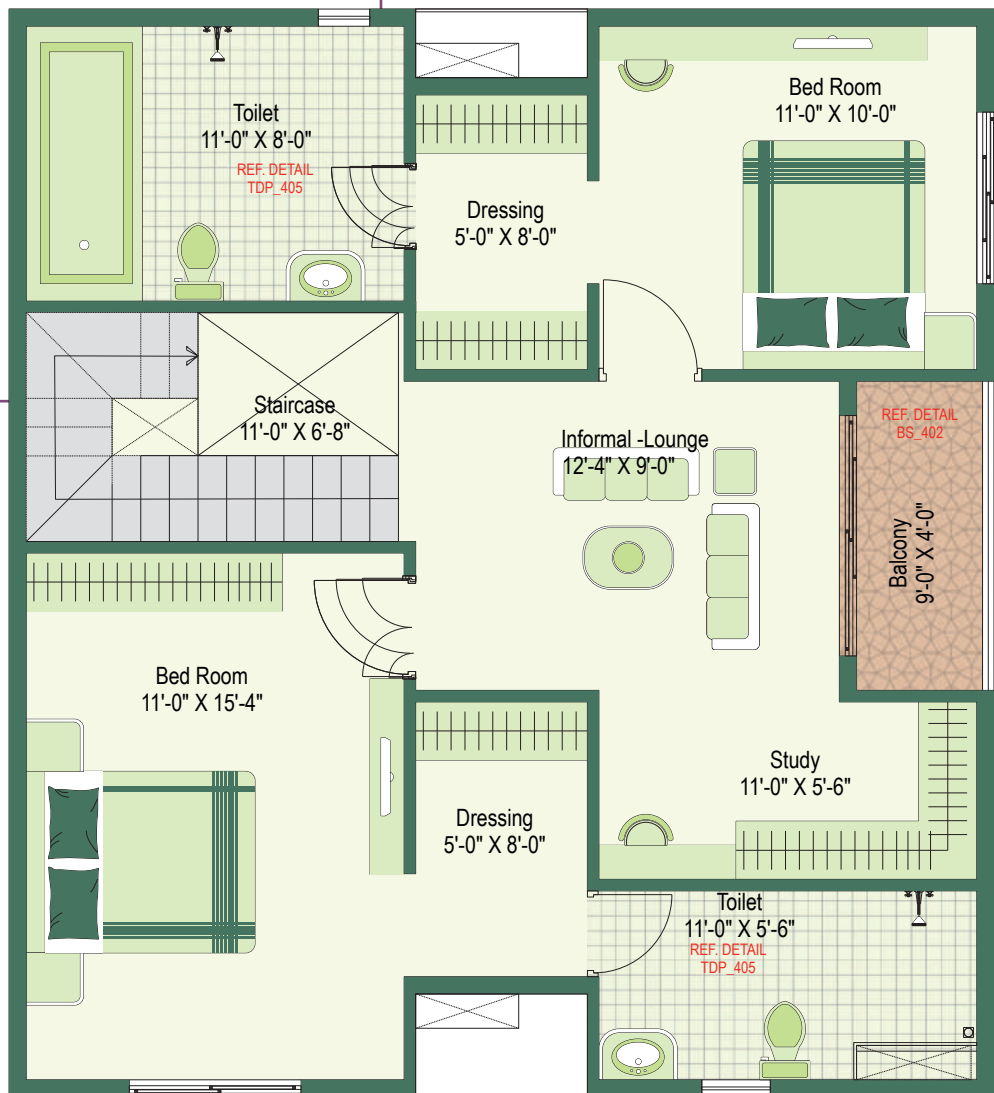
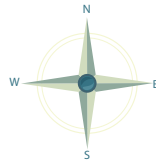
2,350 sq.ft.



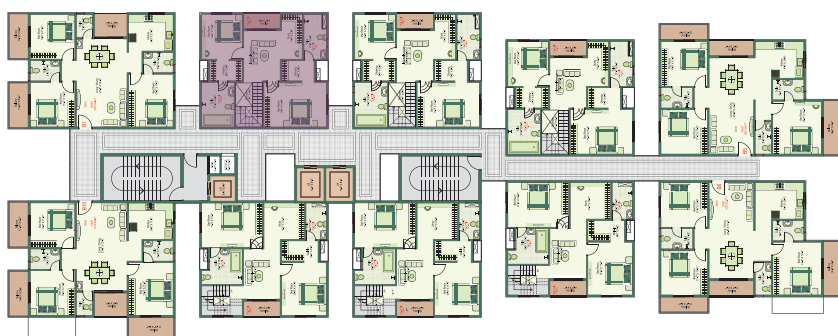
Lower Floor



Artist's impression, Not an actual site photograph.



Upper Floor



The image shown with furniture/fitting fixtures including wash basin /washing machine are only indicative of space planning and is not part of developers scope. Main doors will be as per corridor.






GREENNESTO
Sustainable Living



Primus

Scan For More Details



Site Address:

Greennesto Primus, Chikkanayakanahalli Village,
Bengaluru Urban, Karnataka - 560035

 **95137 36510**

primusliving.com



Disclaimer:

This brochure is based on conceptual design and is an artistic impression and cannot be used as legal document.
Developers and architects may change/alter design to suit any functional requirement of the end user.