

GRAVITY  
SMERA  
*Gardens*



**A Living, Breathing  
Neighborhood**

Step into a world where forest-lined roads guide your way,  
gardens bloom in the sky, and every breeze whispers  
the promise of a greener tomorrow.

# SMERA

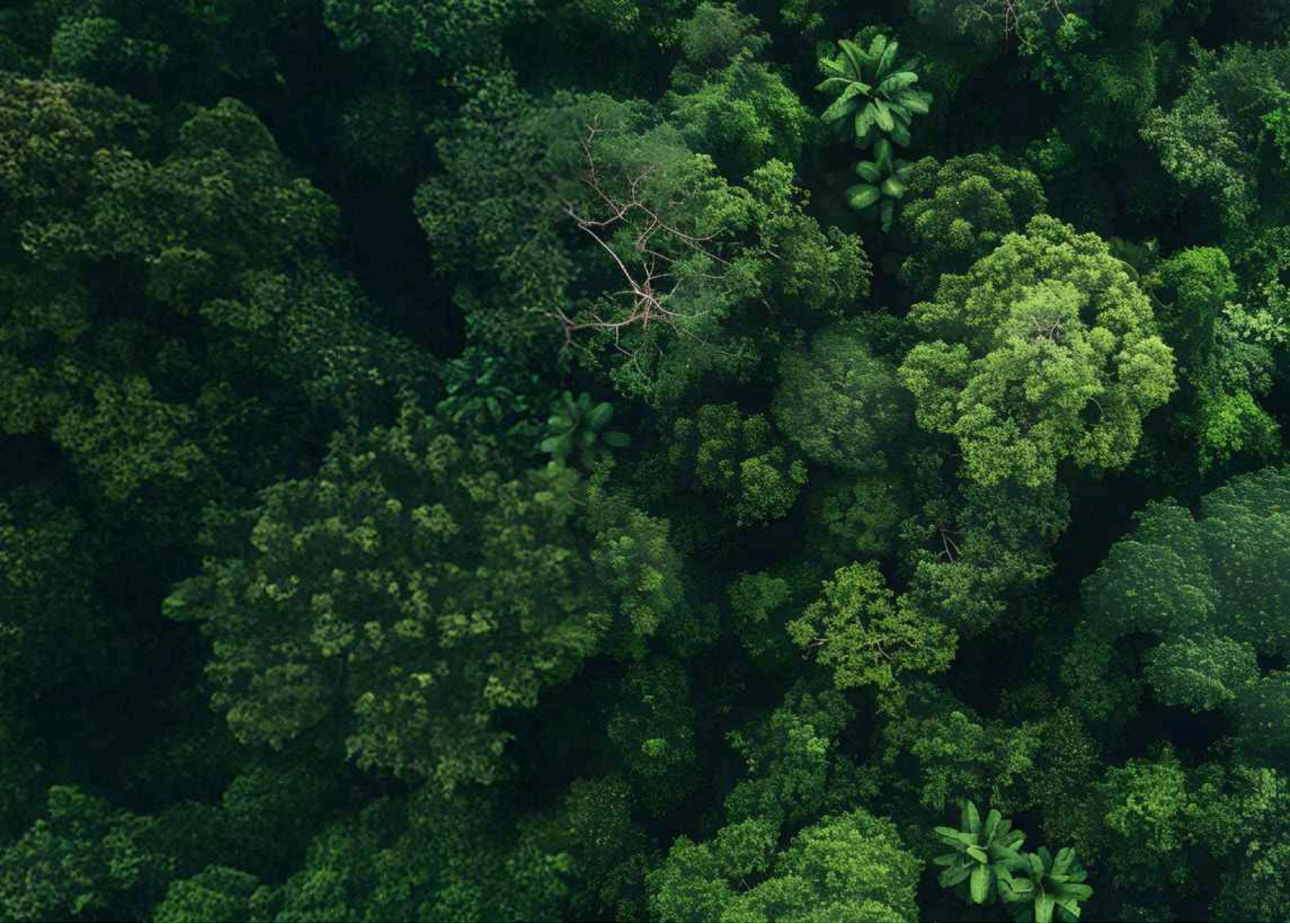
*Gardens*

---

'Smera', a name that radiates the joy of shared smiles. A homely warmth where you can bask in the positivity of nature, here's your simple reminder of cherished togetherness.

**SHOT AT SITE**





# 1500+ TREES

**WE DIDN'T JUST PLANT A COMMUNITY.  
WE PLANTED A FOREST**

At Gravity Smera Gardens, every detail is rooted in purpose. When asked why we chose to plant private backyards for all 174 villa units, our answer is simple:

We believe in designing homes that enrich lifestyles—spaces that inspire positivity, spark joy, and support your well-being and productivity every day.

Not just houses to live in, but environments that let you truly live.

Because here, green isn't just landscaping. It's a way of life. We've planted over 1,500 native and diverse trees—not merely for beauty, but to cool the air, cleanse the atmosphere, enrich the soil, and welcome birdsong back into everyday living.



Entrance View



Street View



Shot At Site

Living Area



Shot At Site

Terrace Garden

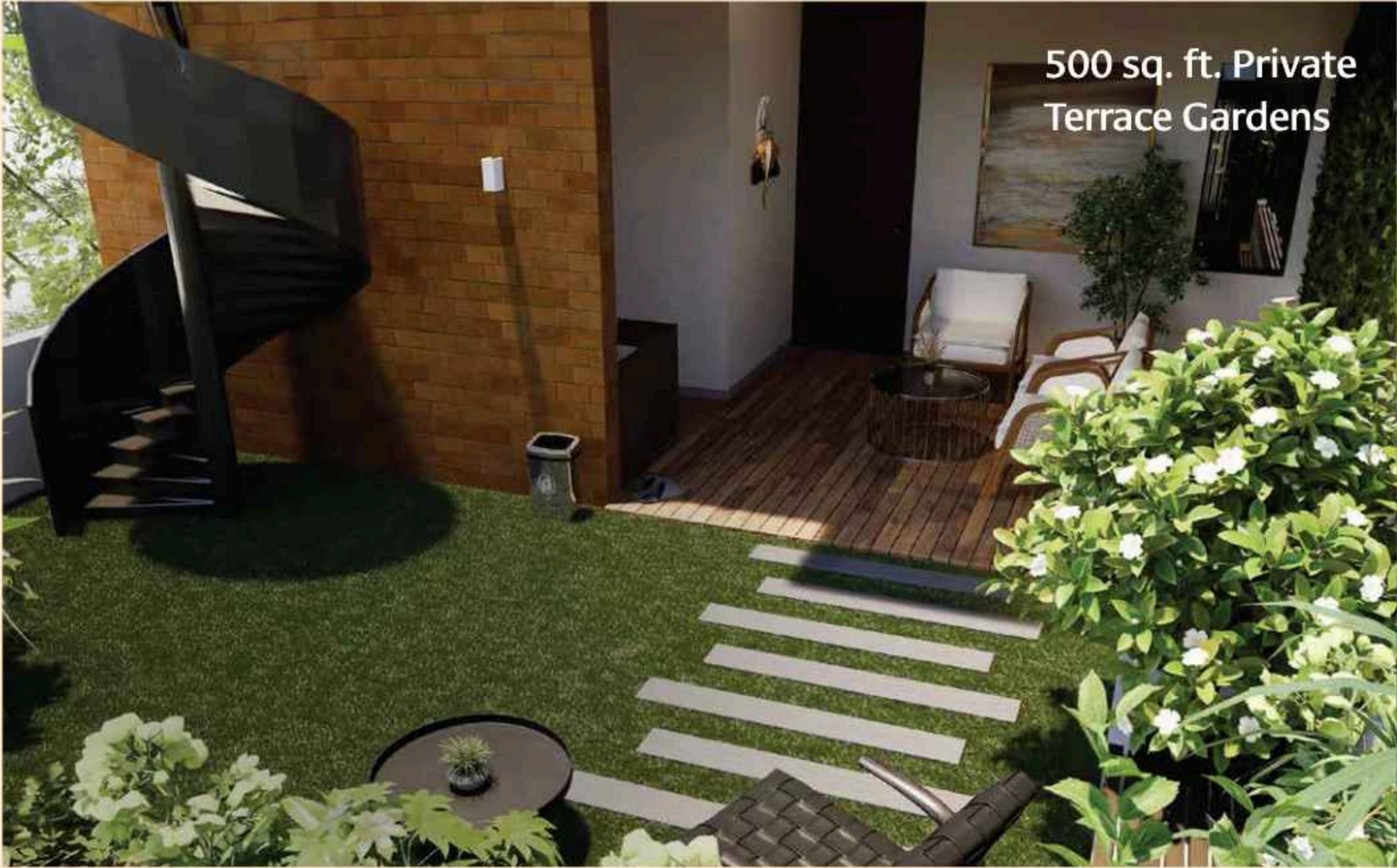
**Arrive into a world  
that's already breathing.**

---



Miyawaki Forest-Themed  
Entrance Stretch

500 sq. ft. Private  
Terrace Gardens

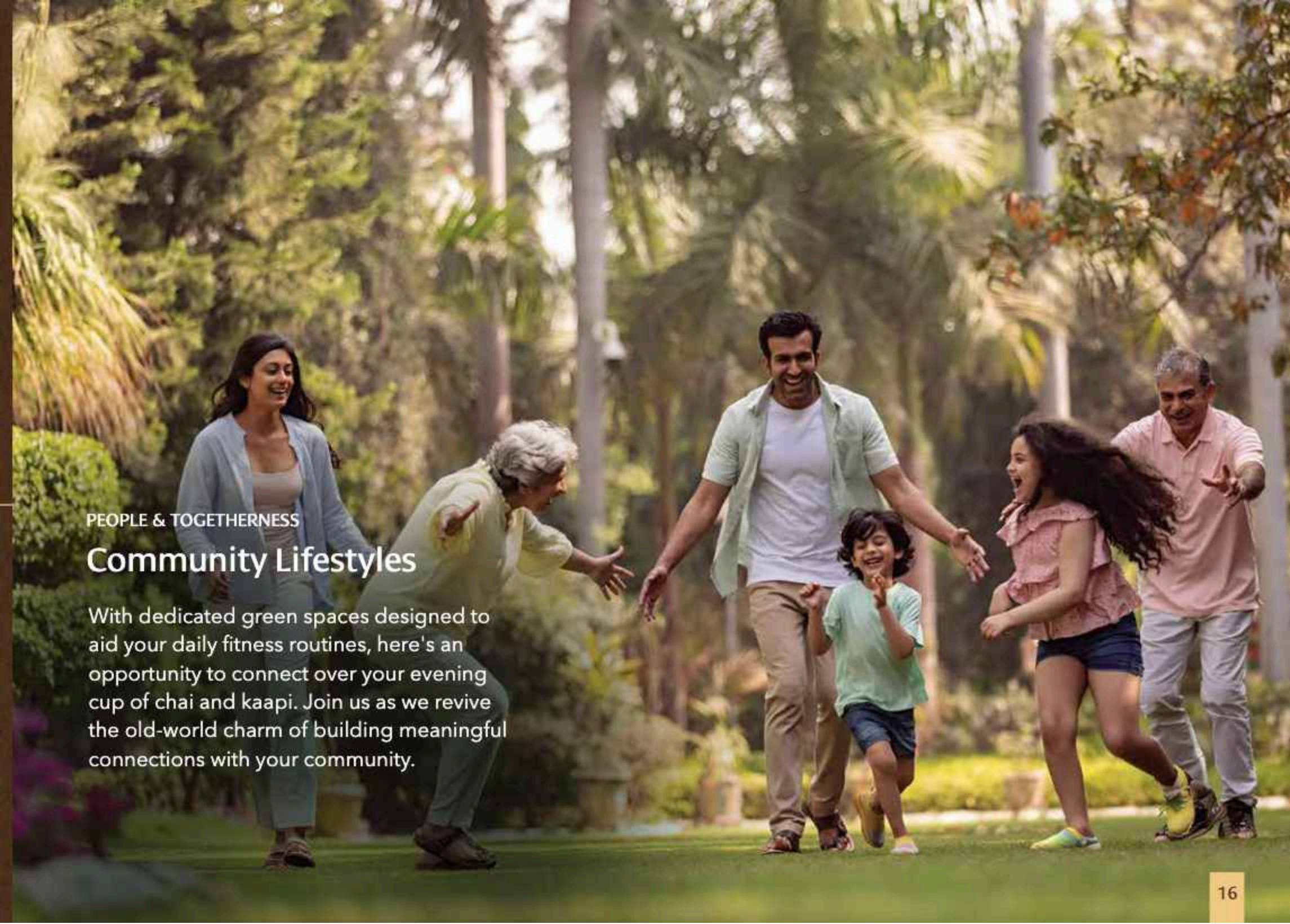


400 sq. ft. Private  
Backyard Gardens



# The Core of Life with Every Project

---



PEOPLE & TOGETHERNESS

## Community Lifestyles

With dedicated green spaces designed to aid your daily fitness routines, here's an opportunity to connect over your evening cup of chai and kaapi. Join us as we revive the old-world charm of building meaningful connections with your community.

# Sustainability at Every Step

We don't build homes. We plant futures.

---



**Cobblestone  
Paved Roads**



**Traditional  
Mud Block Designs**



**Eco-Friendly Indian  
Kota Stones**



**FSC-Certified,  
Timeless and Versatile Timber**

**Crafted for Elegance  
Shaped by the Earth**

A harmony of earthy textures,  
natural materials, and timeless design  
bringing beauty and sustainability together.



# Designer-Modelled Driveways

---

# **Architecture That Breathes with Nature**

Clean lines meet green minds. Every elevation  
is designed to flow with the landscape.



**All-Exclusive  
Verdant Trees**

---

# A Lifestyle Rooted in Nature



- 1- Entry Arch
- 2- Forest Whispers
- 3- Mystic Lagoon
- 4- Multi Use Court
- 5- Volleyball Court
- 6- Little Explorers Cove
- 7- Pickleball Court
- 8- Cricket Pitch
- 9- Twilight Bay
- 10- Swimming Pool
- 11- Clubhouse
- 12- Open gathering lawn
- 13- SkyBrew Cafe
- 14- Zen Sky meditation
- 15- Amphitheatre
- 16- Sunbeam Lounge
- 17- Kids Swing Haven
- 18- Elder's Wisdom Walk
- 19- Tranquil Patch
- 20- Badminton Court

# Master Plan



# SMERA *Gardens*

ELECTRONIC CITY, SOUTH BANGALORE  
12 ACRES 174 UNITS 3&4 BHK VILLAS

40 FEET WIDE ROAD CONNECTING HOSUR MAIN ROAD

## Unit Details

<b>North facing villas</b>				
Block 18	3046 sqft.	Villa 1-15		
<b>East facing villas</b>				
Block 16	2661 sqft.	Villa 21-29		
Block 12&14	2453 sqft.	Villa 43-57		
Block 10 R	2300 sqft.	Villa 72-76		
Block 10	3515 sqft.	Villa 77-95		
		<b>West facing villas</b>		
		Block 11	2809 sqft.	Villa 58-64
		Block 13	2809 sqft.	Villa 63-71
		Block 15	2587 sqft.	Villa 30-42
		Block 17	2497 sqft.	Villa 16-20

# Nature at Home. The City Within Reach.

## Schools/Colleges

• Harvest International School	03	Mins
• BRS Global School	04	Mins
• Indus International School	10	Mins
• New Horizon University	10	Mins
• ST. Philomena's English School	10	Mins
• Oakridge International School	15	Mins
• Azim Premji University	15	Mins
• International School of Management Excellence	20	Mins
• The International School Bangalore	20	Mins
• Green Wood high International School	20	Mins
• Global Indian International School	25	Mins
• Delhi Public School	25	Mins
• Oxford Medical College	44	Mins
• Silver Oak International School	45	Mins

## Places

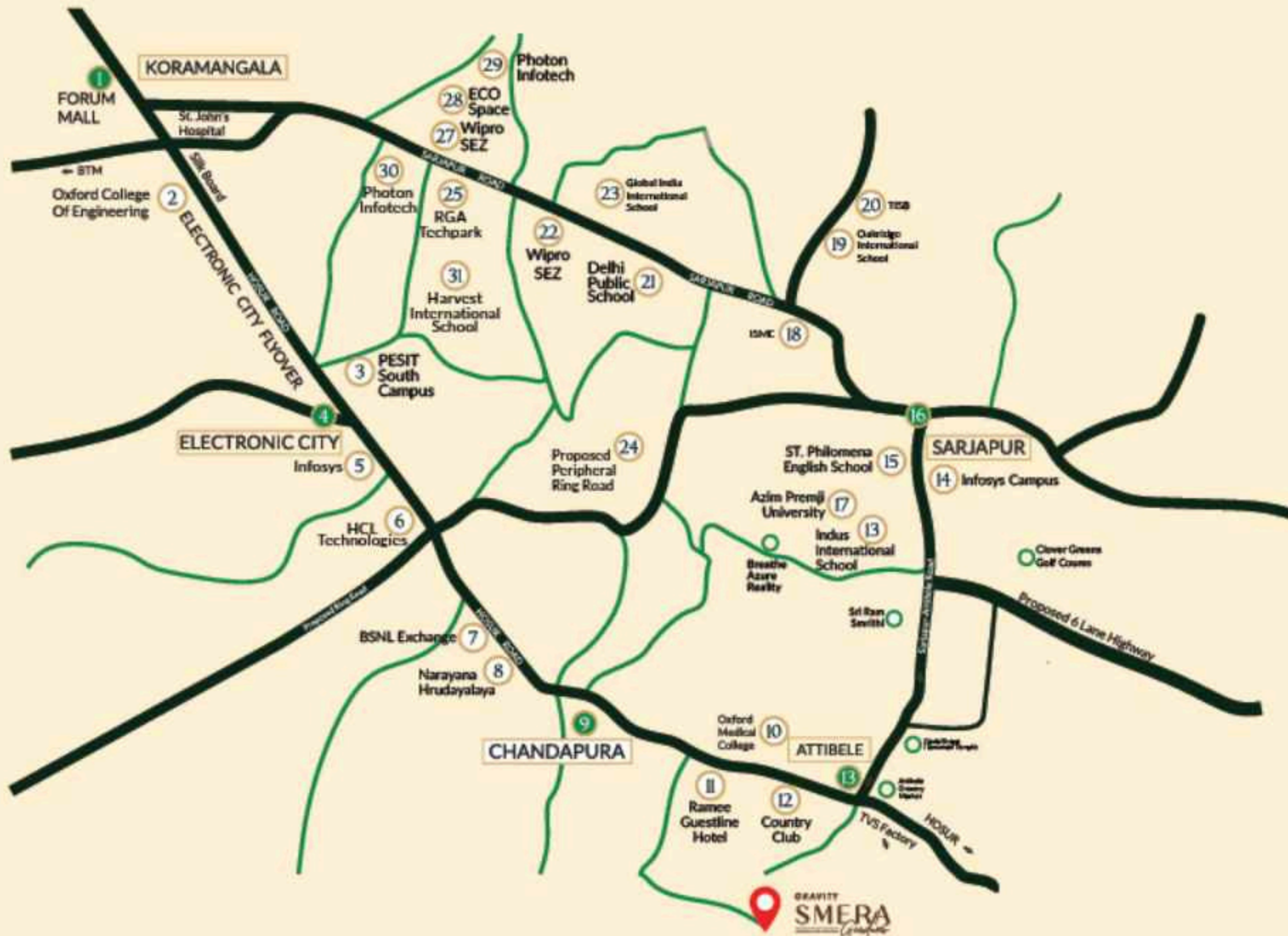
• Whitefield	45	Mins
• Bellandur	40	Mins
• Easy Exit to Hosur	20	Mins
• Electronic City	25	Mins
• Chandapura	15	Mins

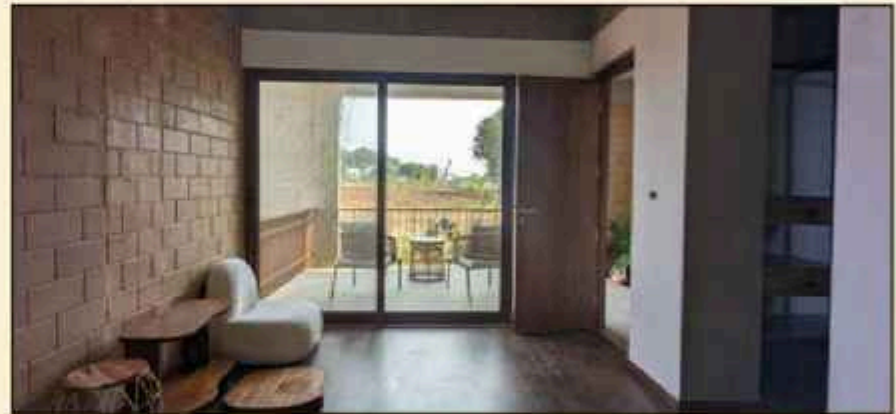
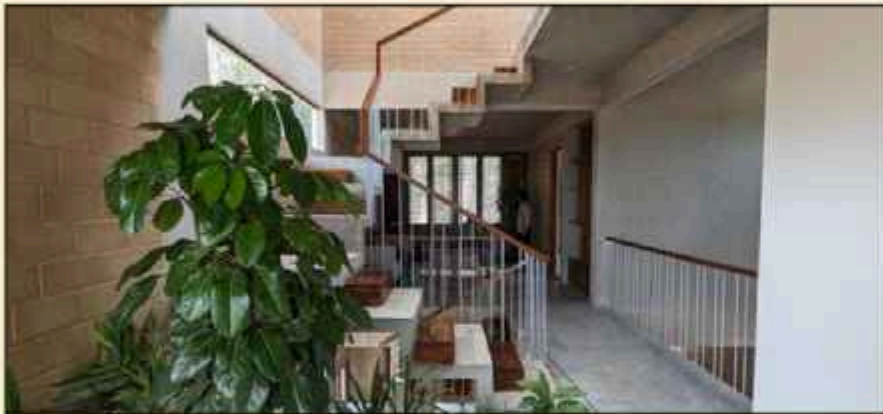
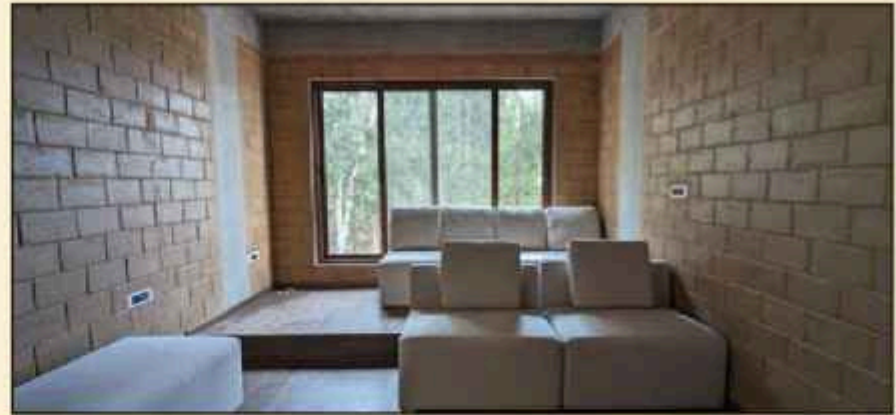
## IT/Corporate

• Proposed Infosys SEZ	15	Mins
• Main Wipro Campus	30	Mins
• HCL	30	Mins
• TVS	20	Mins
• Ashok Leyland	25	Mins
• RGA Techpark	30	Mins

## Hospitals

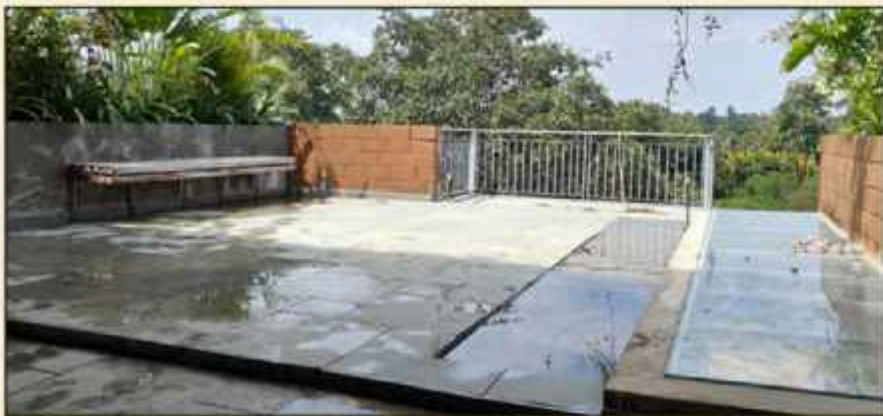
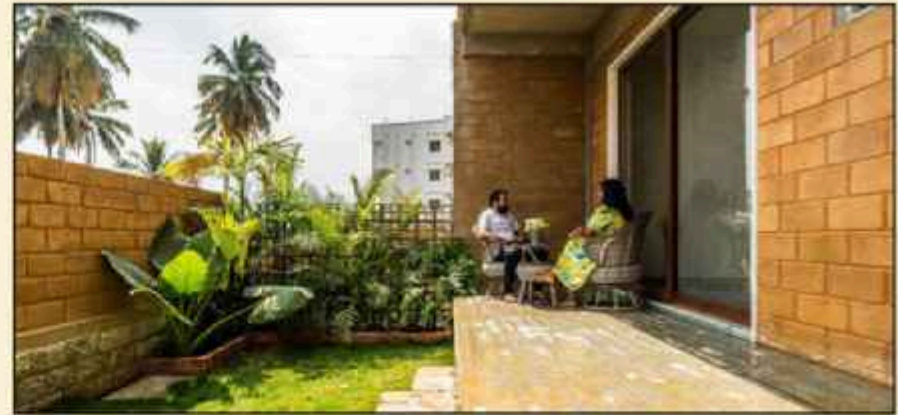
• Apollo Hospital	20	Mins
• Kauvery Hospital	25	Mins
• Columbia Asia Hospital	35	Mins
• Mithra Multi Specialty Hospital	35	Mins





GRAVITY  
**SMERA**  
*Gardens*

SHOT AT SITE



GRAVITY  
ARANYA

---

SHOT AT SITE

# CRAFTING COMMUNITIES IN HARMONY WITH NATURE

---



GRAVITY

**Thanisandra**

**3.8 Acres, 3 Towers, 27 Floors, 286 Units**  
Thanisandra, North Bangalore



GRAVITY

**Aranya**

**4+ Acres, 3 & 4 BHK, 108 Units**  
Turahalli Forest, BSK 6th Stage



PARAJILAN  
Architecture - Interiors - Landscape

GRAVITY  
**Lake Estates**

**15 Acres, 200 Units**  
Rajanukunte, Yelahanka



# Built to Converse with Nature

With more than a decade of experience, Gravity Homes offers a unique amalgamation of nature-inclusive community living and enriching private comfort along with a host of integrated amenities and meaningful differentiators of locations, proven appreciation and promising investments. We don't just create luxury. We create memorable luxury.



## Mission

---

Our mission at Gravity is all about enriching lives. A relentless commitment to turn your living ideals into reality - a home that not only elevates your lifestyle but becomes a part of your life's beautiful journey.

## Vision

---

Our community inspires us and drives us to push our envelopes as we design homes. We believe in the power of people, working towards redefining the journey of healthy community lifestyles where we set a new benchmark, fusing luxury, sustainability, and community engagement.



# “Beyond Walls, We Build Homes”

---

## AFFORDABLE LUXURY LIVING

---

Elevated lifestyles, a host of enhanced amenities, epitomising luxury, we offer an exquisite living experience.

## PROVEN APPRECIATION & LONG-TERM VALUE

---

With proven value appreciation (60%-100%)\*, and a long-term value prospect that secures financial growth over time. Gravity Homes combines convenience and comfort with guaranteed returns.

## EXPERIENCE CALM WITHIN CITY LIMITS

---

Tucked away from the noise, experience luxury living spaces within city limits without surging maintenance costs.



## SEAMLESS CONNECTIVITY AND CONVENIENCE

---

Strategically positioned projects with maximised benefits of well-connected roads and hassle-free commuting experiences, without dulling your daily routines.

## RESALE & FUTURE OPPORTUNITIES

---

Opening doors to future opportunities, we ensure a high resale potential that paves the way for a successful investment journey.

## SUSTAINABILITY AT THE CORE

---

A core value and the praxis that shapes every stage of our construction, aligning modern living with responsible environmental stewardship.

GRAVITY  
SMERA  
*Gardens*

[WWW.GRAVITYSMERAGARDENS.COM](http://WWW.GRAVITYSMERAGARDENS.COM)

THIS IMAGE USED ARE ONLY INDICATIVE

The brochure is conceptual in nature and is by no means a legal offering. The Promoters have the right to change, alter, delete or add any specification mentioned herein. For the latest information, please contact the sales representative. This is a copyright material for only Gravity Estates.

Strategic partner  **Dwelite**

Know More About Project : **+91 63620 37732**