



EMBASSY
GREENSHORE

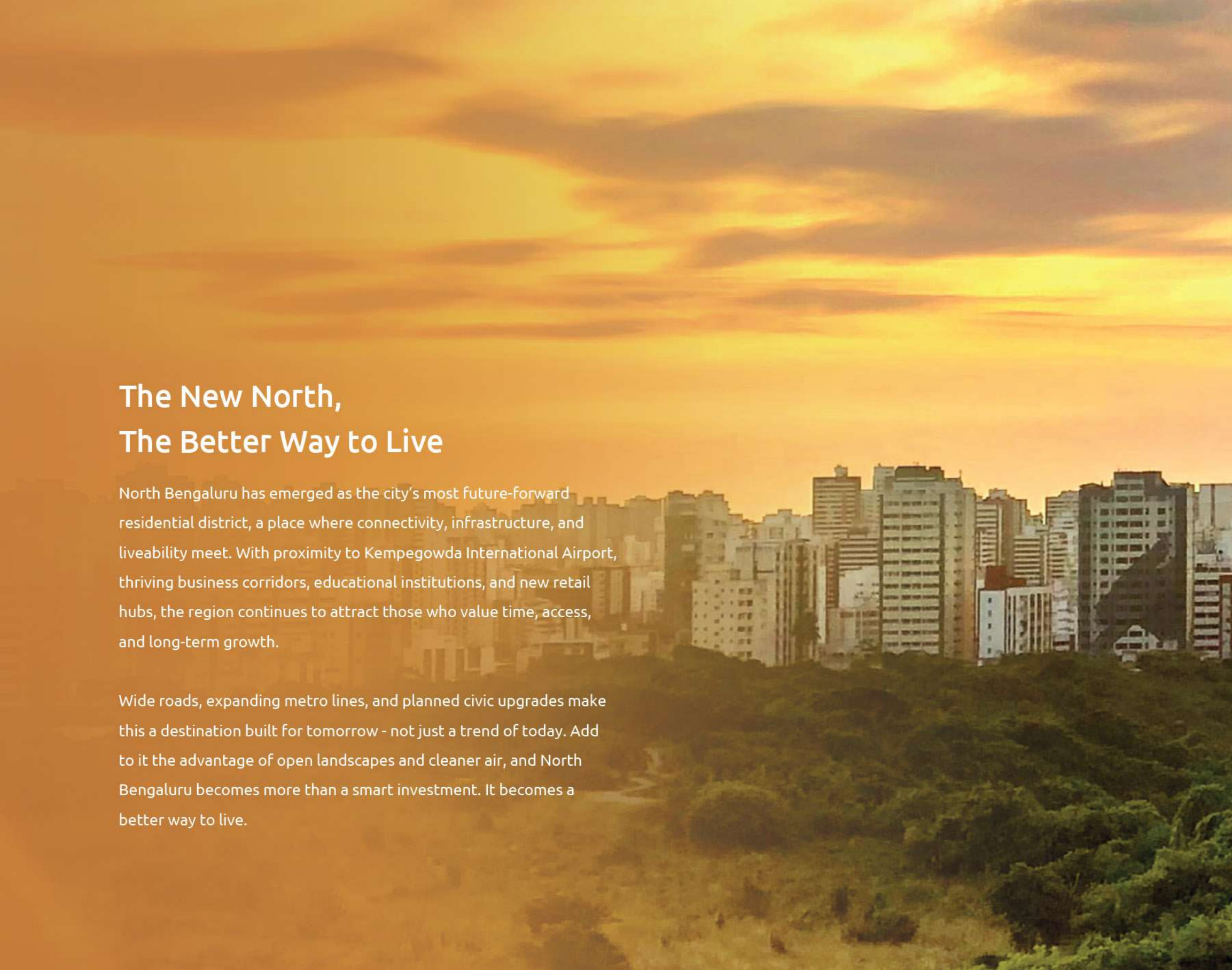




Artist's Impression

LIFE FLOWS *Differently here*



A cityscape at sunset with a dense forest in the foreground. The sky is filled with warm, golden light and soft clouds. The city buildings are silhouetted against the bright sky, and the foreground is dominated by lush green trees.

The New North, The Better Way to Live

North Bengaluru has emerged as the city's most future-forward residential district, a place where connectivity, infrastructure, and liveability meet. With proximity to Kempegowda International Airport, thriving business corridors, educational institutions, and new retail hubs, the region continues to attract those who value time, access, and long-term growth.

Wide roads, expanding metro lines, and planned civic upgrades make this a destination built for tomorrow - not just a trend of today. Add to it the advantage of open landscapes and cleaner air, and North Bengaluru becomes more than a smart investment. It becomes a better way to live.







EMBASSY
SPRINGS

A Masterplan for Happiness

Amid the pace of modern life, we often long for places that restore ease, a sense of belonging, and balance.

Embassy Springs was created with that simple idea: that happiness isn't found in fleeting moments, but in the way we live every day.

Spread across 288 acres, Embassy Springs is North Bengaluru's biggest and best-planned city. It is a self-contained ecosystem of homes, school, parks, lakes, and community spaces, all designed to make life effortless.

Here, you don't travel to find peace. You simply come home to it.



Artist's Impression



Life flows differently here

Set beside a natural lake and surrounded by expansive open spaces, Embassy Greenshore brings a new rhythm to urban living. One that is calmer, more open, and beautifully connected to its surroundings.

Spread across 14 acres, this premium residential enclave features 8 towers and 878 spacious apartments, thoughtfully designed to maximise natural light, fresh air, and uninterrupted views. With large format 2, 3, and 4 BHK homes and seamless access to township conveniences, every day here feels peaceful and thoughtfully curated.

At Embassy Greenshore, the stillness of water meets the comfort of well planned spaces, creating a life that truly flows differently.

Homes Made for Light, Space, and Stillness

Every apartment at Embassy Greenshore is crafted for those who seek clarity and calm. Generous room sizes, intelligent layouts, and smooth spatial transitions create a living experience that feels naturally bright, open, and harmonious.

Lake facing homes, spacious balconies, and cross ventilated interiors welcome natural elements without compromising privacy or comfort. From the arrival experience to the finest finishing details, every aspect reflects a commitment to refined and elevated living for those who value both serenity and sophistication.







Artist's Impression

An aerial photograph of a modern residential development. On the left, a tall, multi-story apartment building with a white facade and brown accents stands next to a landscaped area featuring a small swimming pool, a walkway, and some colorful flowers. A wide, multi-lane road with yellow and white markings runs diagonally across the middle of the image. To the right of the road is a large, lush green park with many trees and a winding path. In the bottom left corner, a large body of water, possibly a lake or reservoir, is visible. The entire scene is bathed in a warm, golden light, suggesting a sunrise or sunset. The text "FEATURES & AMENITIES" is overlaid in the center of the image.

FEATURES & AMENITIES



Designed Around Your Pace of Life

A pedestrian friendly Central Park forms the heart of Embassy Greenshore, with children's parks, picnic lawns, a zen garden, and a pet park. It is designed to support a natural flow between energetic moments and peaceful ones.

14

ACRE
DEVELOPMENT

3.6

ACRE CENTRAL
PARK

8

RESIDENTIAL
TOWERS

878

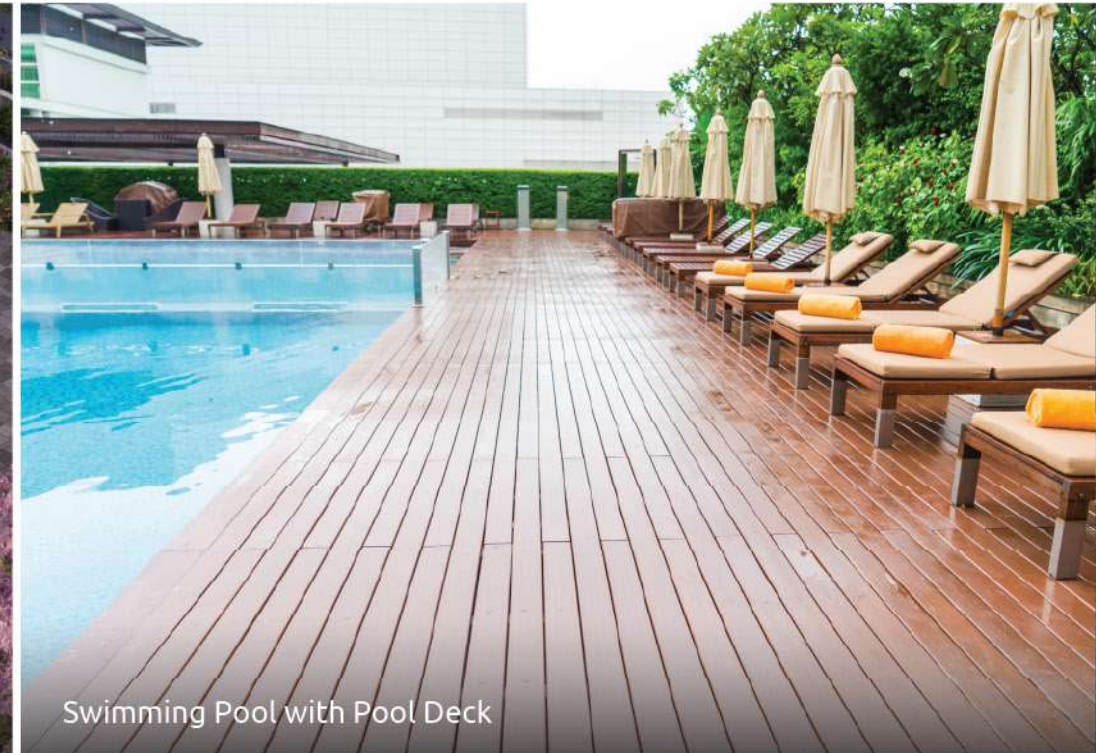
PREMIUM
HOMES



The Podium of Possibilities



Arrival Plaza



Swimming Pool with Pool Deck



Grand Clubhouse

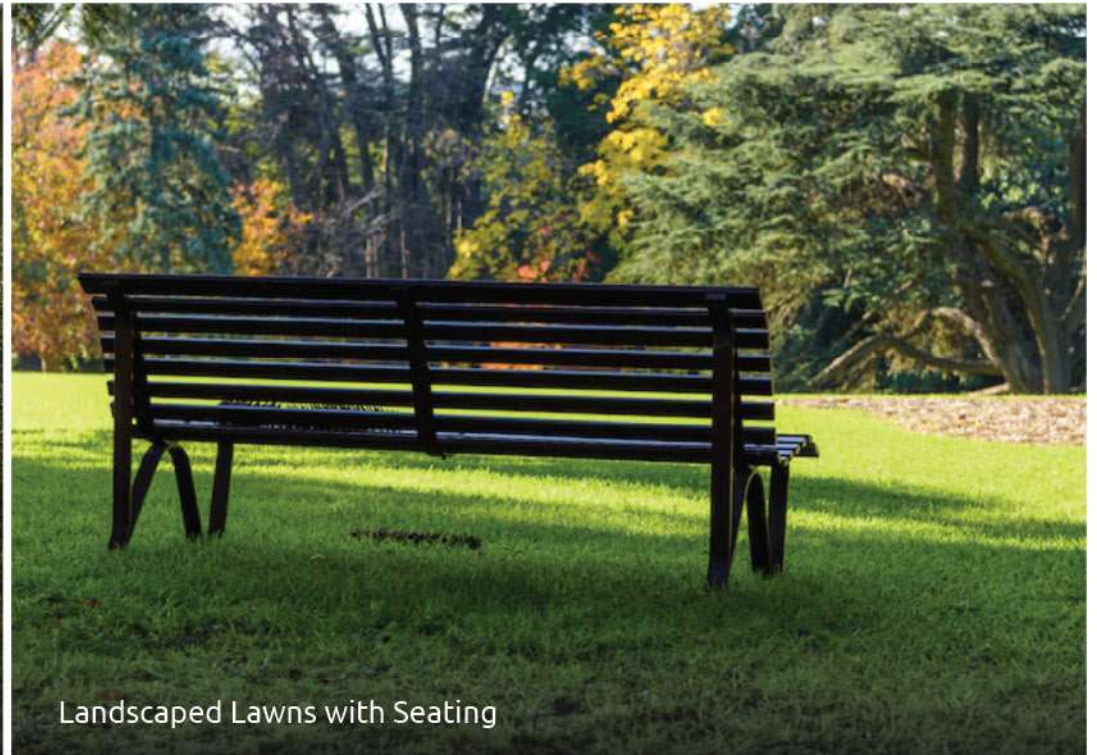


Children's Play Area

Amenities that flow with nature - inviting you to slow down, reconnect, and truly live well, with every space crafted to feel open, calming, and seamlessly in tune with the outdoors.



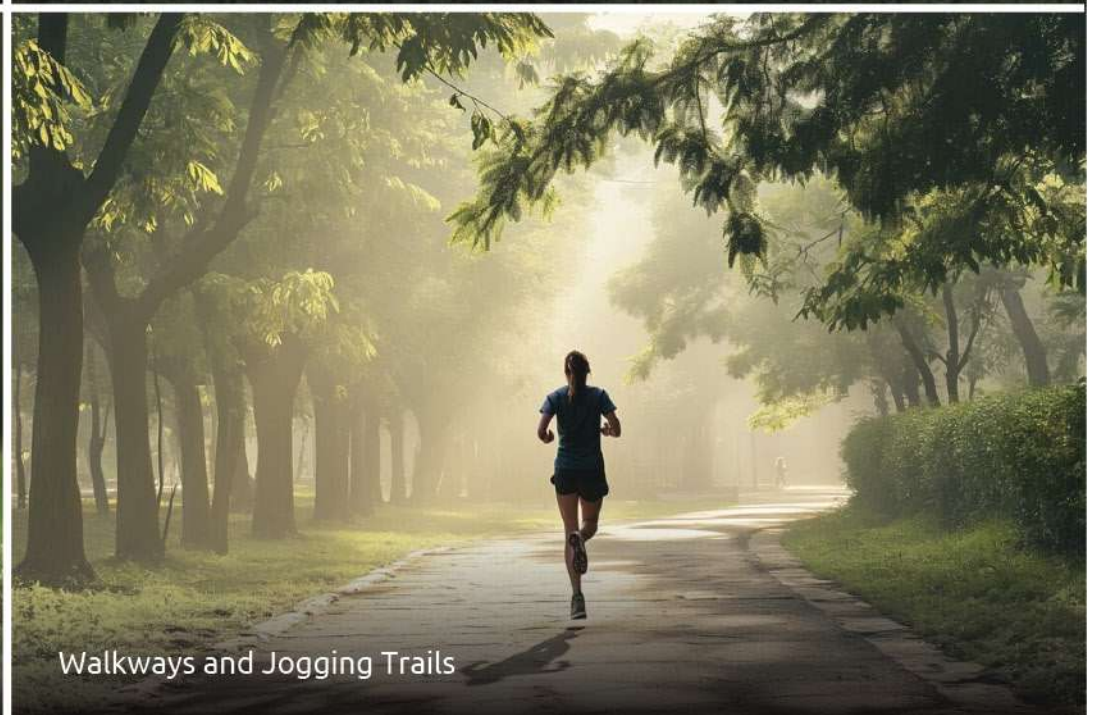
Sports Courts



Landscaped Lawns with Seating



Pet Park



Walkways and Jogging Trails

The image features a dramatic landscape of rolling green hills under a dark, stormy sky. The hills are illuminated from the side, creating a strong contrast between light and shadow. On the right side of the image, there is a large, semi-transparent green circular graphic that partially overlaps the landscape. The word "MASTERPLAN" is written in a light green, sans-serif font across the middle of the image.

MASTERPLAN







MASTERPLAN

01. ENTRY

02. ARRIVAL PLAZA

03. VIEWING DECK

04. CHILDREN'S PLAY AREA

05. AMPHITHEATER

06. SPORTS COURTS

07. ZEN GARDEN

08. SKATING RINK

09. PET PARK

10. JOGGING TRACK

11. CRICKET PITCH

12. PICNIC LAWNS

13. CELEBRATION LAWN

14. CLUBHOUSE

15. SWIMMING POOL

16. YOGA LAWN

17. SERVICES



CLUSTER PLANS

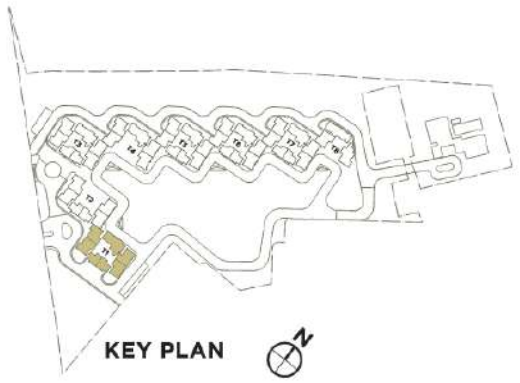
The information and visuals presented herein are artistic impressions and serve as indicative representations, subject to potential alterations by authorities and architects. They are not binding offers or contracts, and EMBASSY DEVELOPMENTS LIMITED or their agents cannot be held liable for any inaccuracies. The promoters retain the prerogative to make necessary changes to the project as required. Please note that kitchens will be delivered as bare shells, with sinks provided in the utility area only. All parties involved are advised to independently verify details and specifications before making any commitments, ensuring transparency and accuracy throughout the project's development.



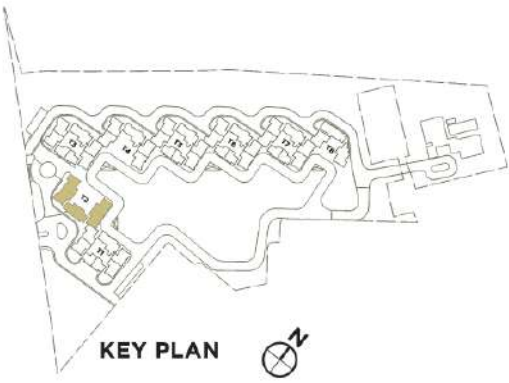
Designed for Light, Air, and Life

From orientation to spacing, every tower plan is designed to maximize openness and natural light. The thoughtful layout fosters a sense of community while preserving the privacy of each home.

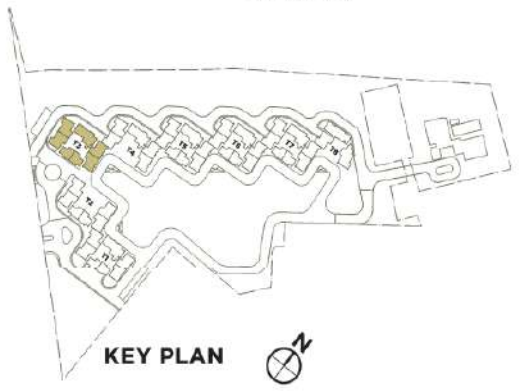
TOWER T1 TYPICAL FLOOR PLAN



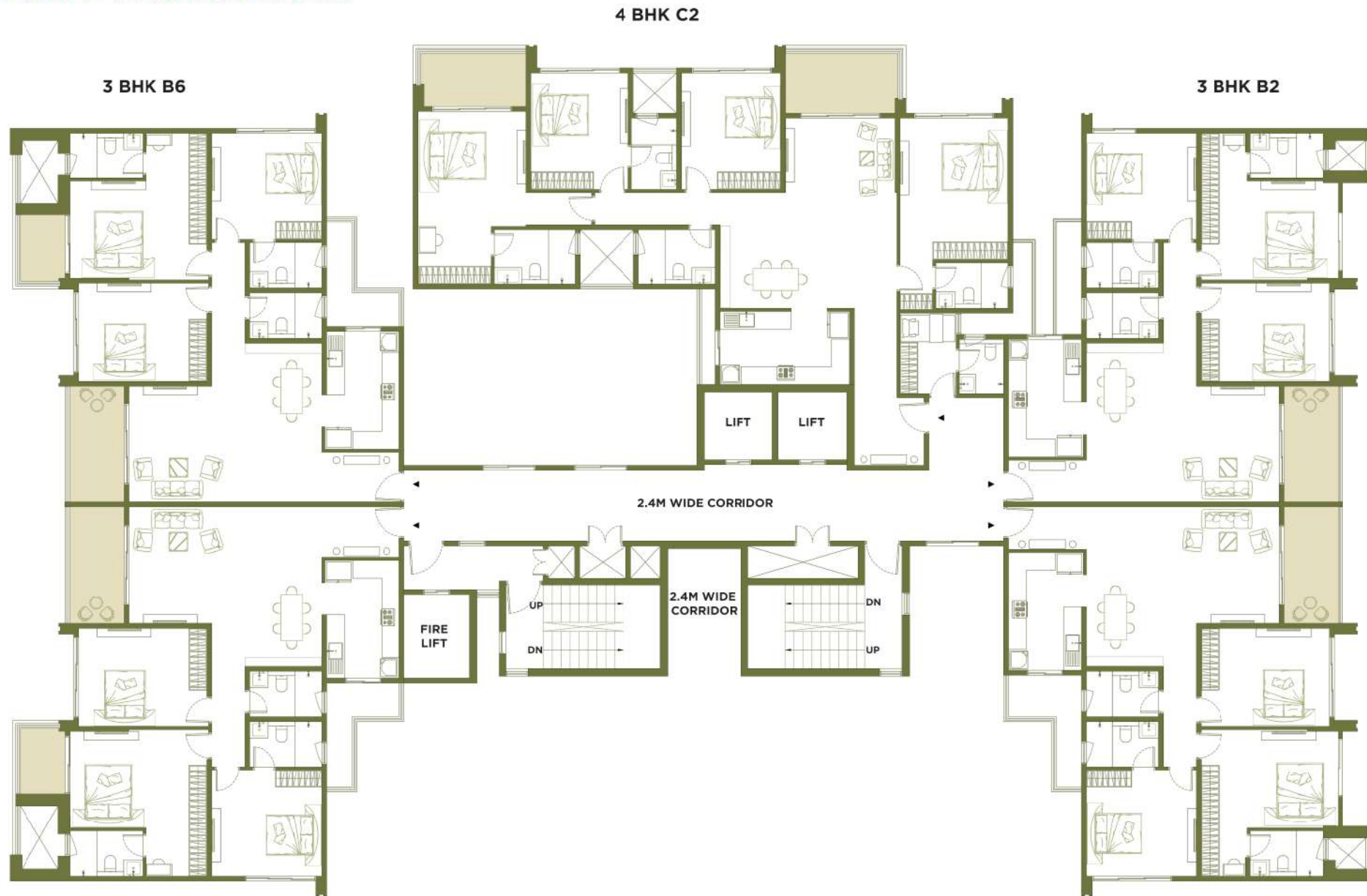
TOWER T2 TYPICAL FLOOR PLAN



TOWER T3 TYPICAL FLOOR PLAN



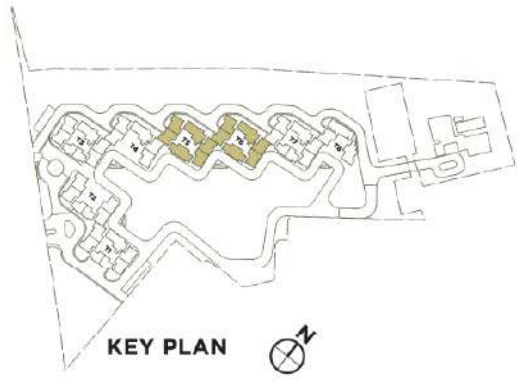
TOWER T4 TYPICAL FLOOR PLAN



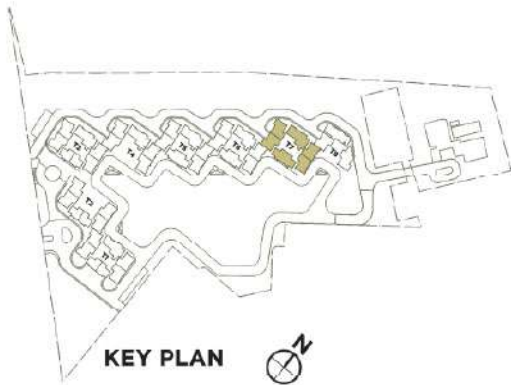


Artist's Impression

TOWER T5 AND T6 TYPICAL FLOOR PLAN



TOWER T7 TYPICAL FLOOR PLAN



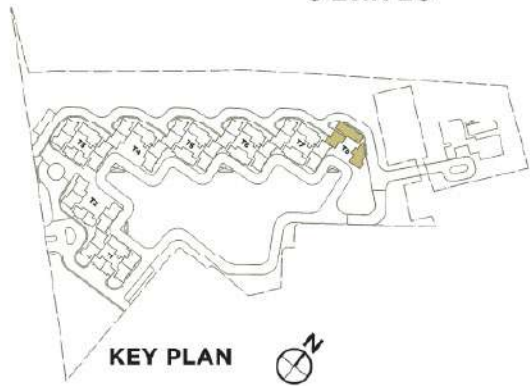
TOWER T8 TYPICAL FLOOR PLAN

4 BHK C3



3 BHK B9

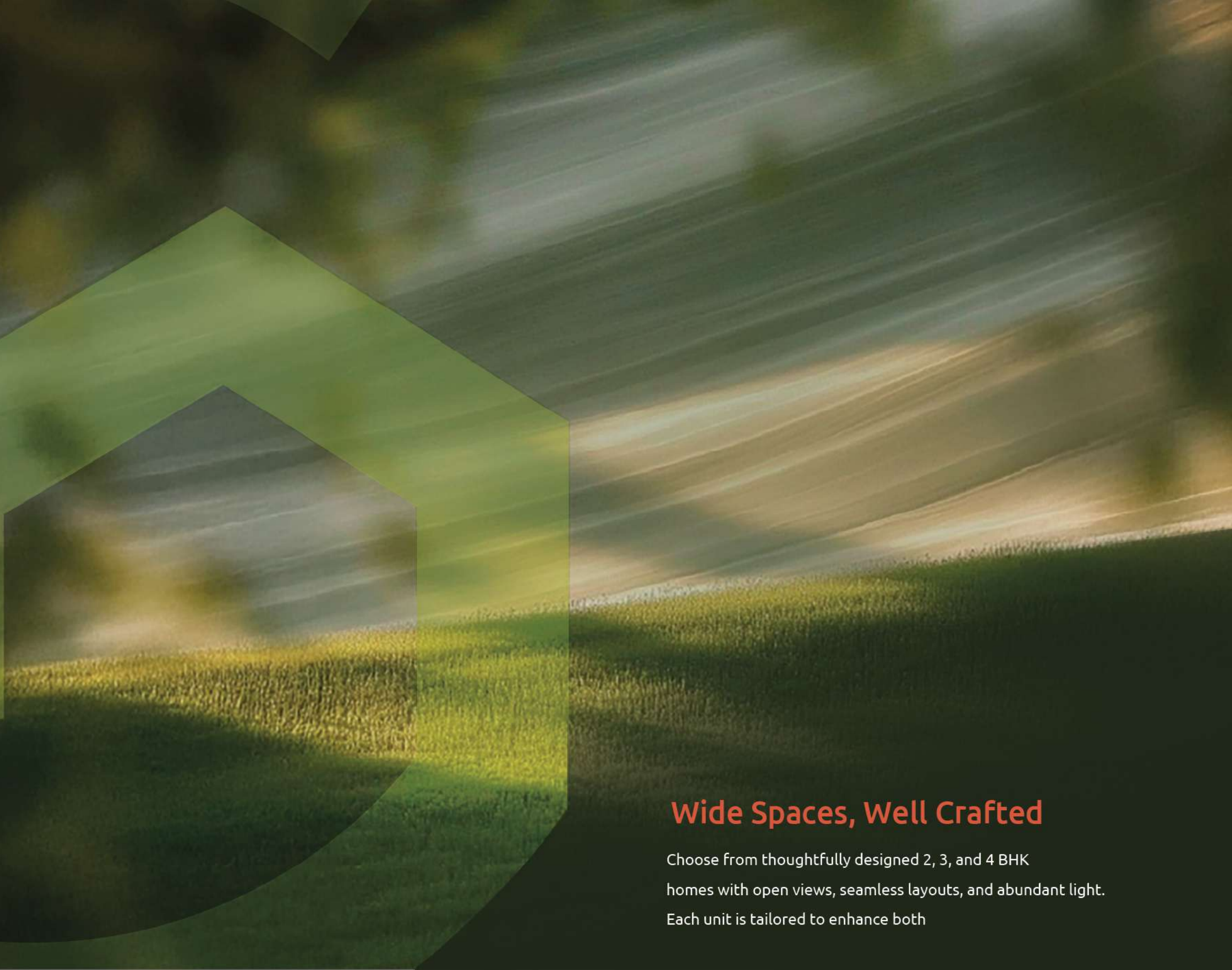
4 BHK C1





UNIT PLANS

The information and visuals presented herein are artistic impressions and serve as indicative representations, subject to potential alterations by authorities and architects. They are not binding offers or contracts, and EMBASSY DEVELOPMENTS LIMITED or their agents cannot be held liable for any inaccuracies. The promoters retain the prerogative to make necessary changes to the project as required. Please note that kitchens will be delivered as bare shells, with sinks provided in the utility area only. All parties involved are advised to independently verify details and specifications before making any commitments, ensuring transparency and accuracy throughout the project's development.



Wide Spaces, Well Crafted

Choose from thoughtfully designed 2, 3, and 4 BHK homes with open views, seamless layouts, and abundant light. Each unit is tailored to enhance both

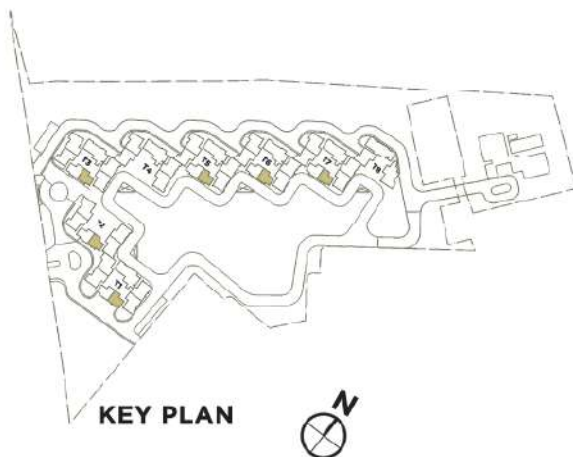
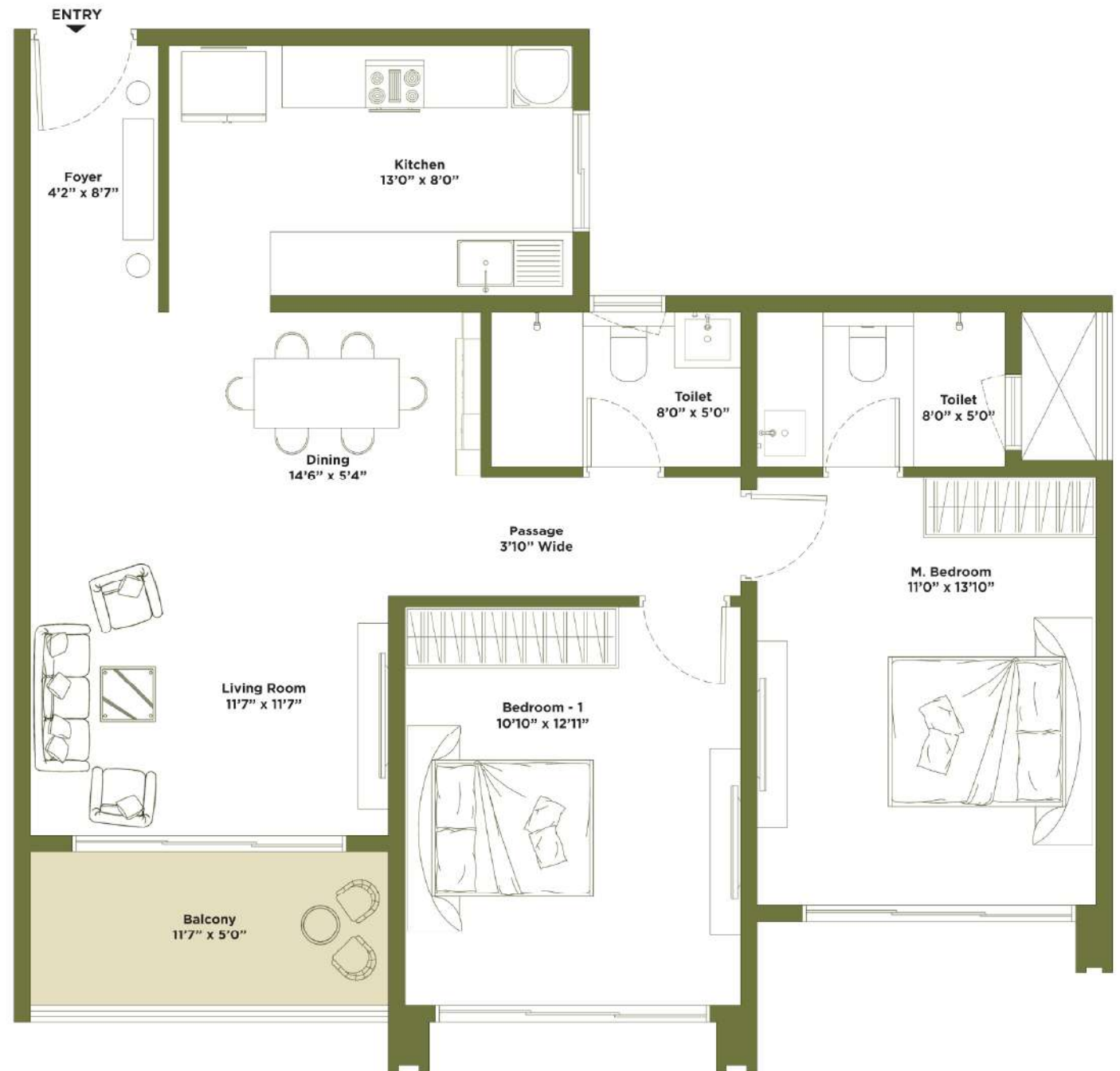


2 B H K R E S I D E N C E S

TOWER T1, T2, T3, T5, T6, T7

2 BEDROOM - A1

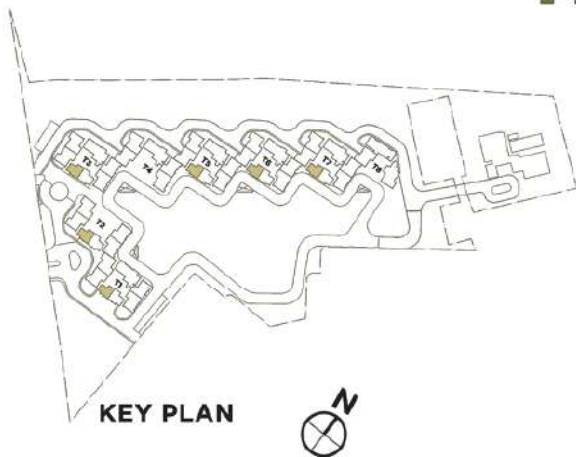
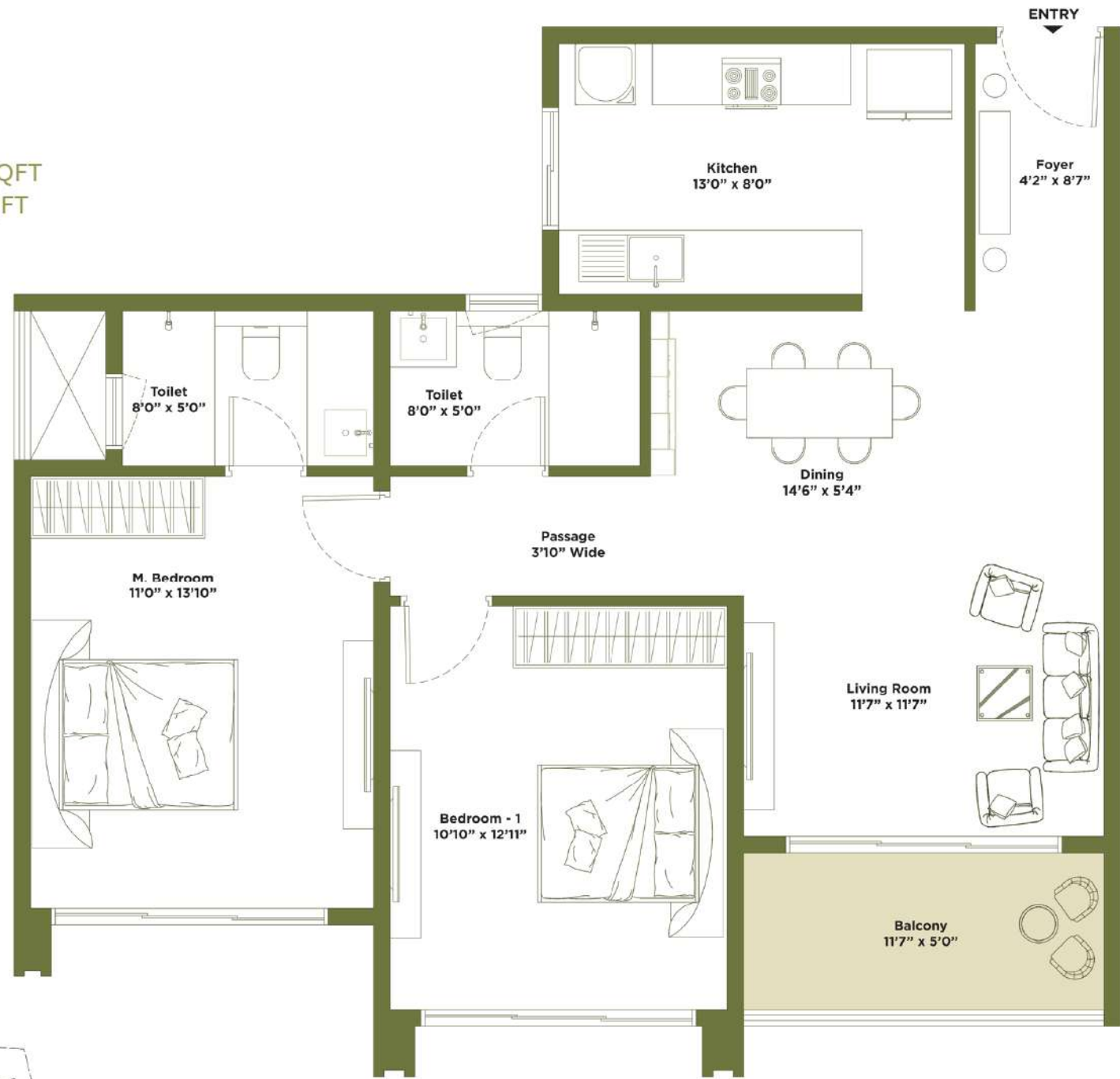
SUPER BUILT-UP AREA: 1207.47 SQFT
CARPET AREA: 867.71 SQFT
FACING: NORTH



TOWER T1, T2, T3, T5, T6, T7

2 BEDROOM - A2

SUPER BUILT-UP AREA: 1207.47 SQFT
CARPET AREA: 867.71 SQFT
FACING: NORTH



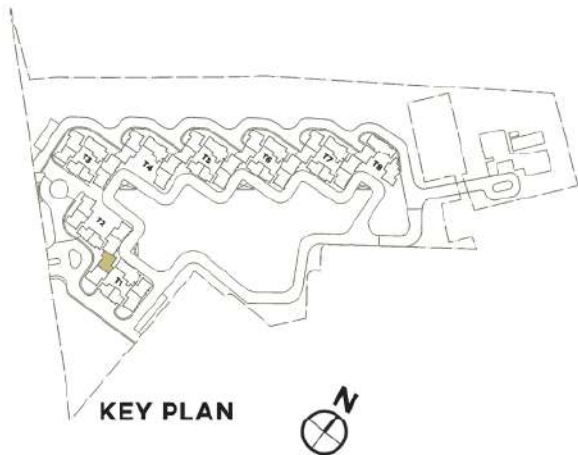
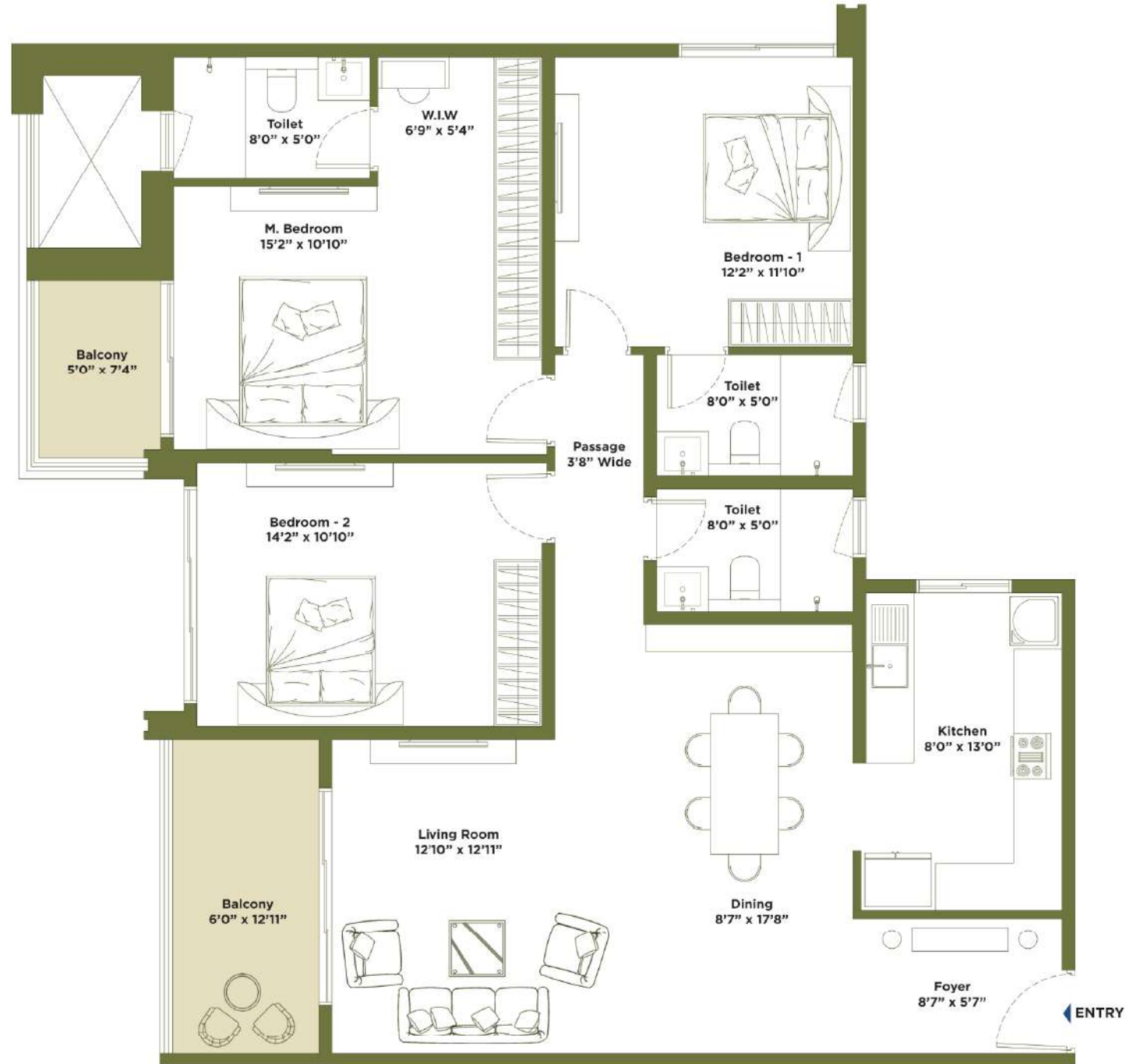


3 BHK RESIDENCES

TOWER T1

3 BEDROOM - B5

SUPER BUILT-UP AREA: 1837.53 SQFT
CARPET AREA: 1331.29 SQFT
FACING: EAST



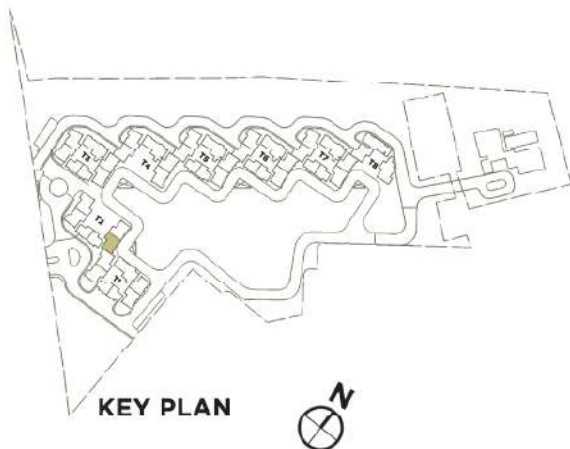
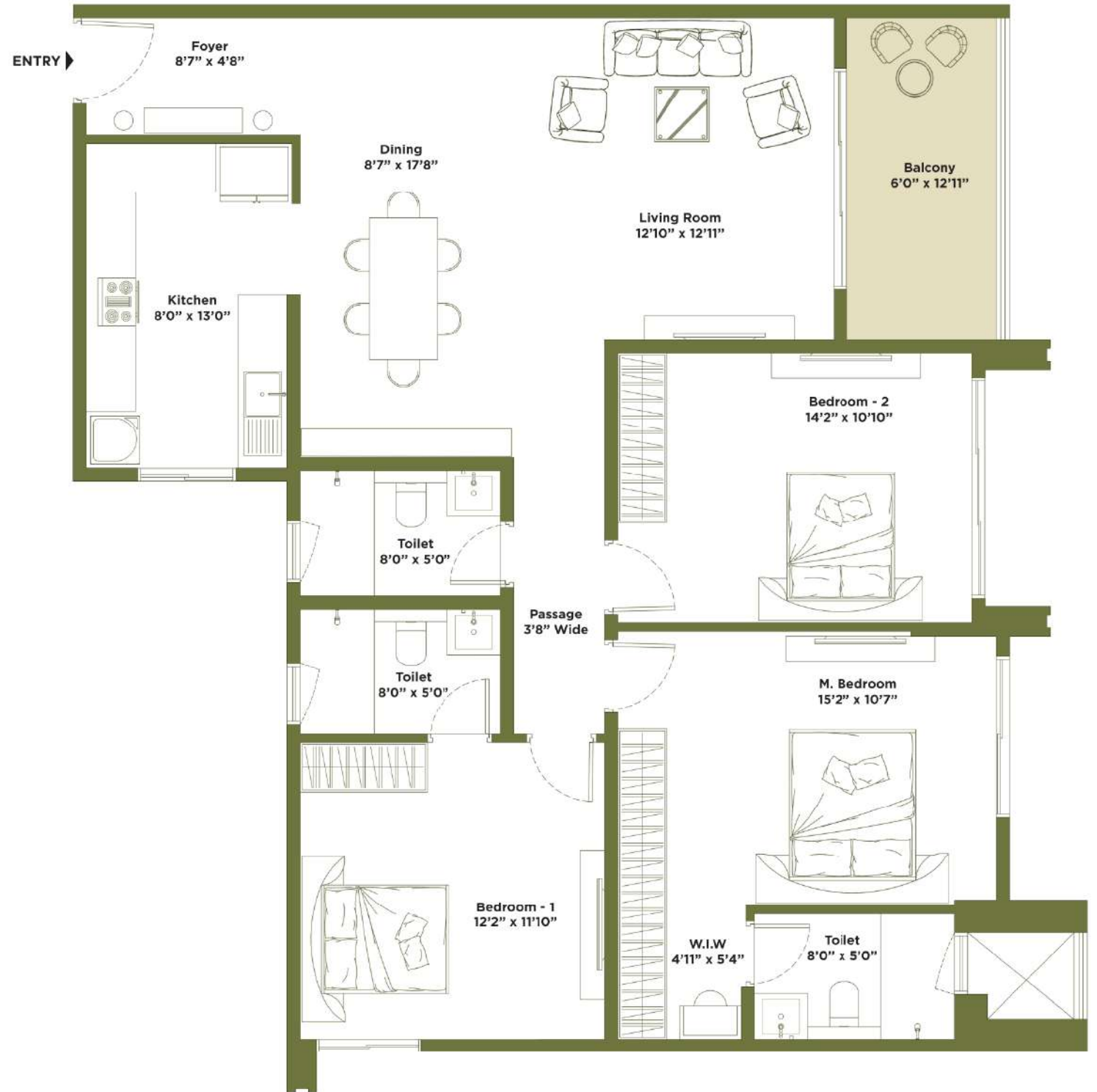
KEY PLAN



TOWER T2

3 BEDROOM - B4

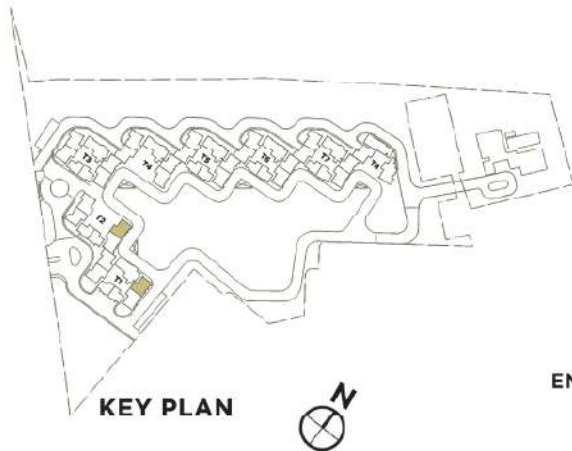
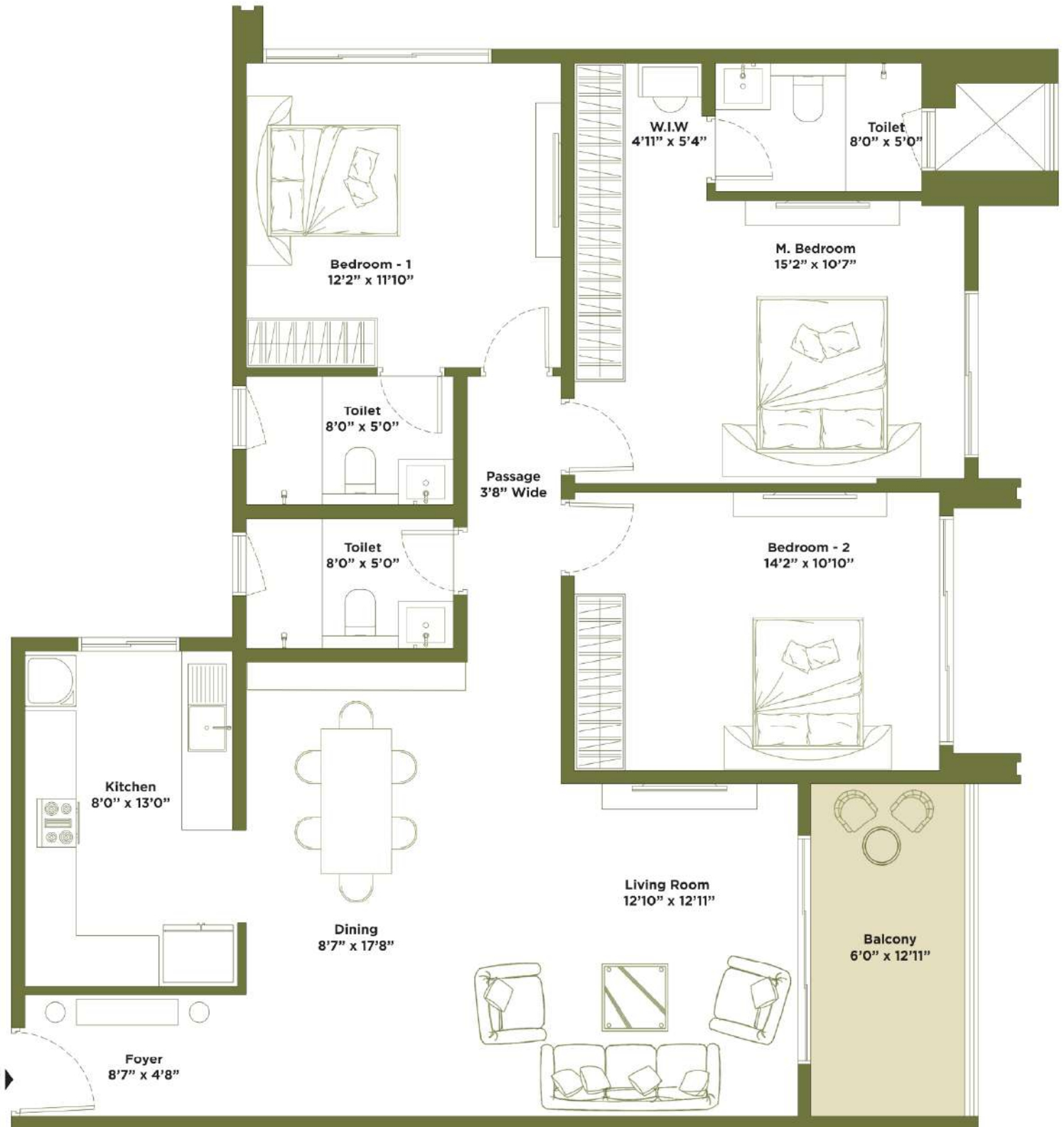
SUPER BUILT-UP AREA: 1752.64 SQFT
CARPET AREA: 1274.44 SQFT
FACING: WEST



TOWER T1, T2

3 BEDROOM - B1

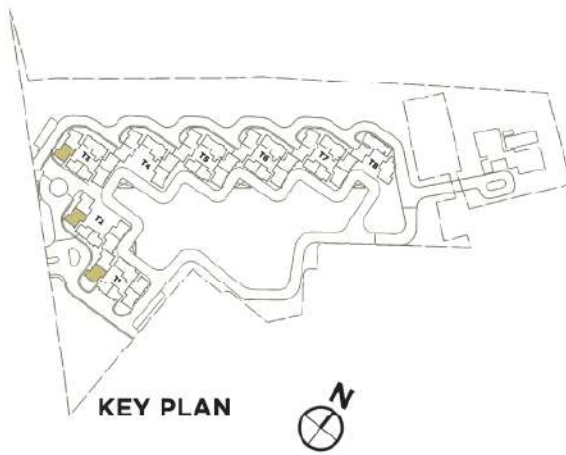
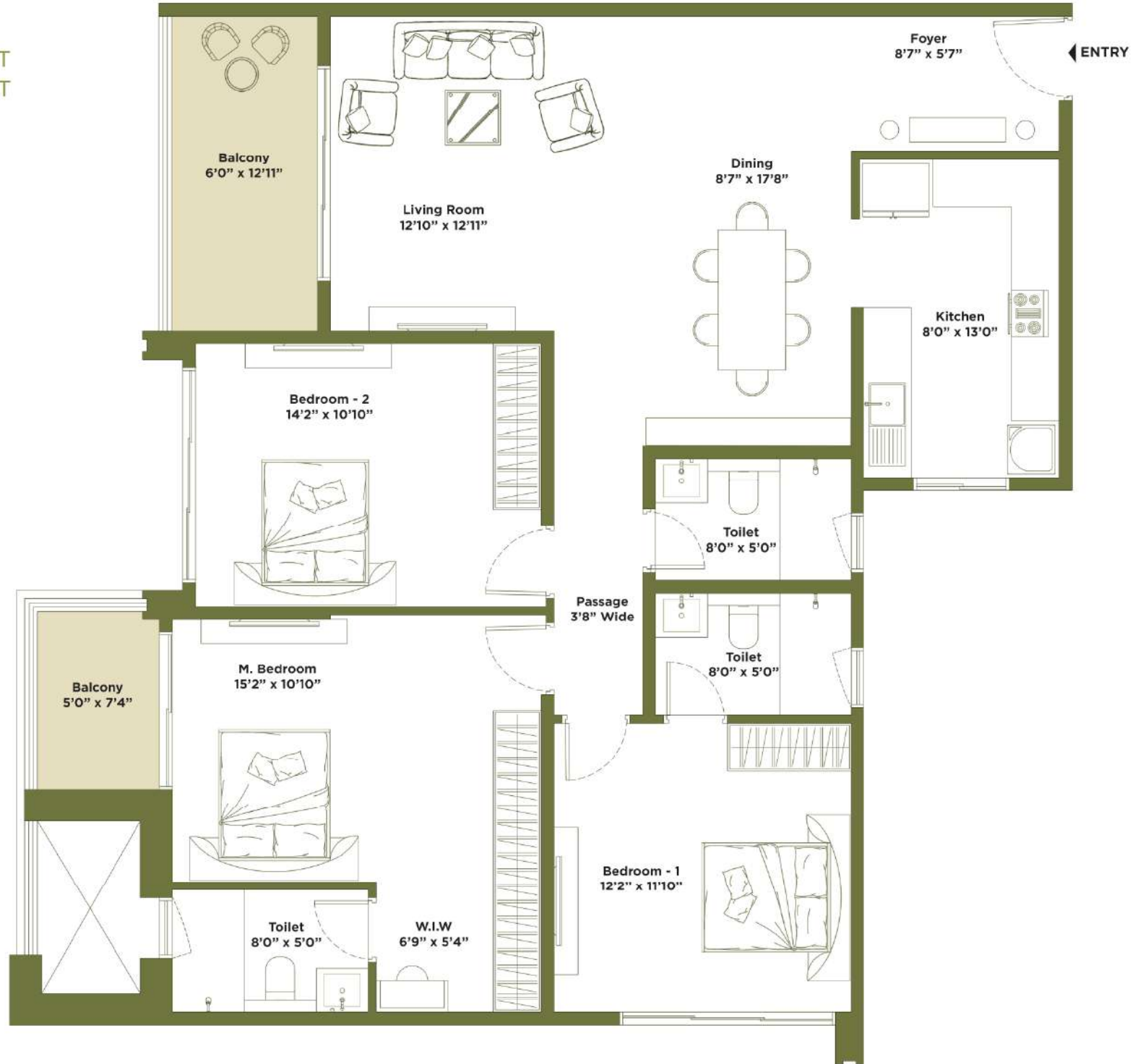
SUPER BUILT-UP AREA: 1750.30 SQFT
CARPET AREA: 1274.44 SQFT
FACING: WEST



TOWER T1, T2, T3

3 BEDROOM - B7

SUPER BUILT-UP AREA: 1837.53 SQFT
CARPET AREA: 1331.29 SQFT
FACING: EAST



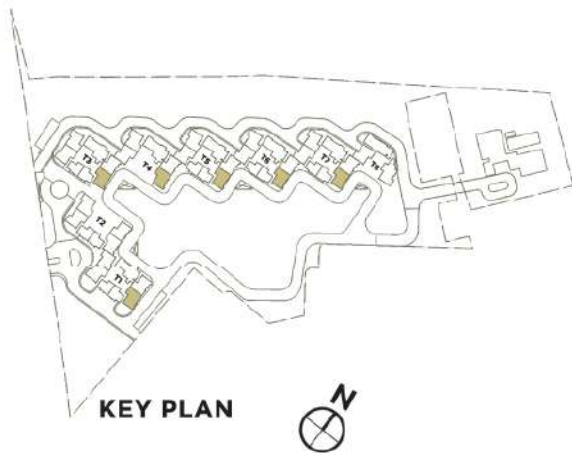
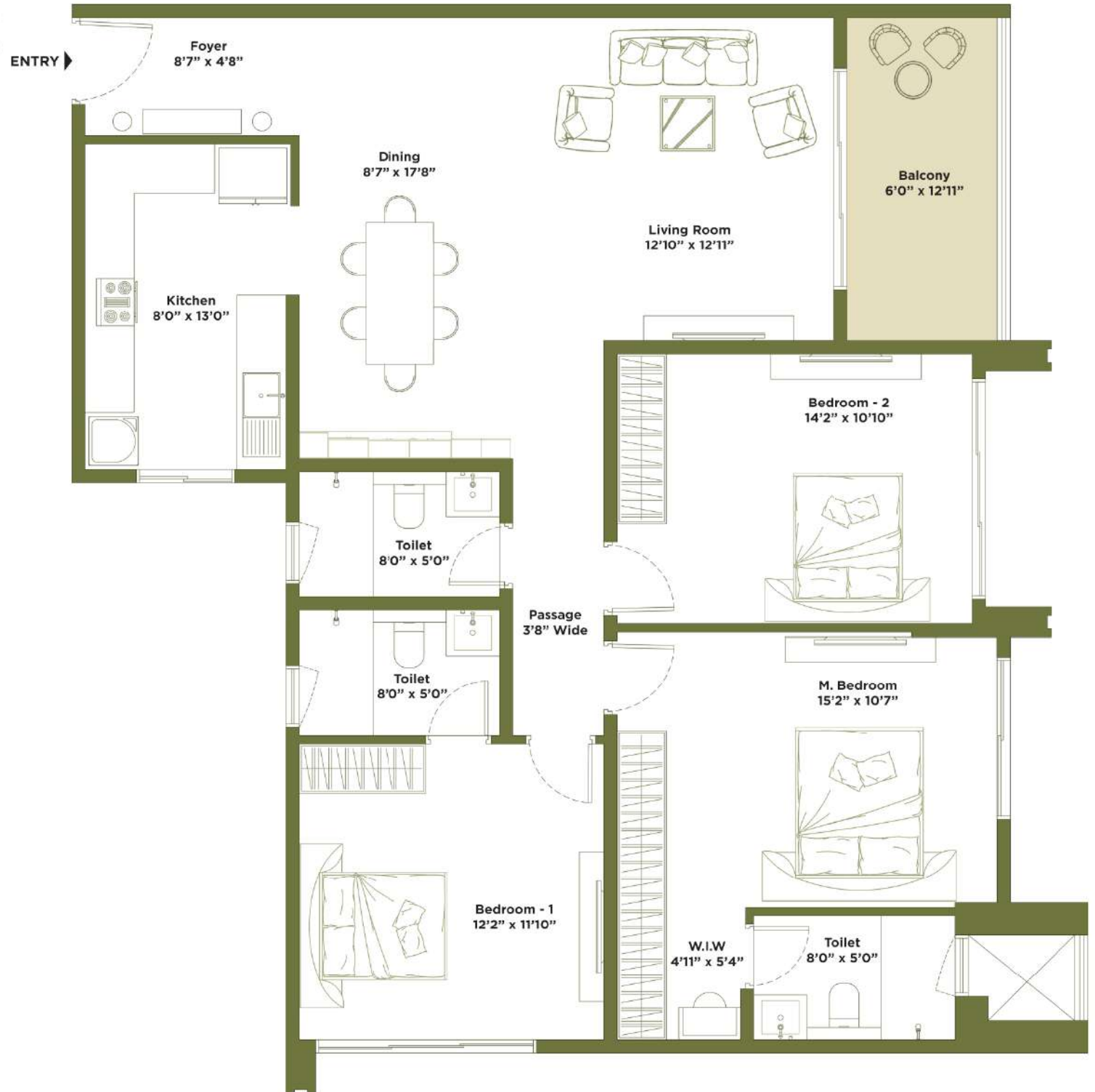
KEY PLAN



TOWER T1, T3, T4, T5, T6, T7

3 BEDROOM - B3

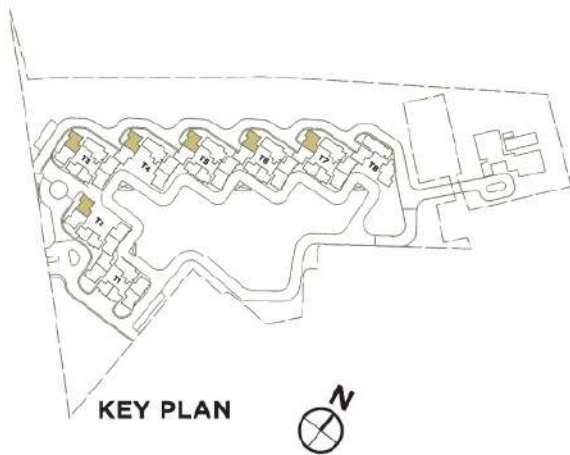
SUPER BUILT-UP AREA: 1752.64 SQFT
CARPET AREA: 1274.44 SQFT
FACING: WEST



TOWER T2, T3, T4, T5, T6, T7

3 BEDROOM - B6

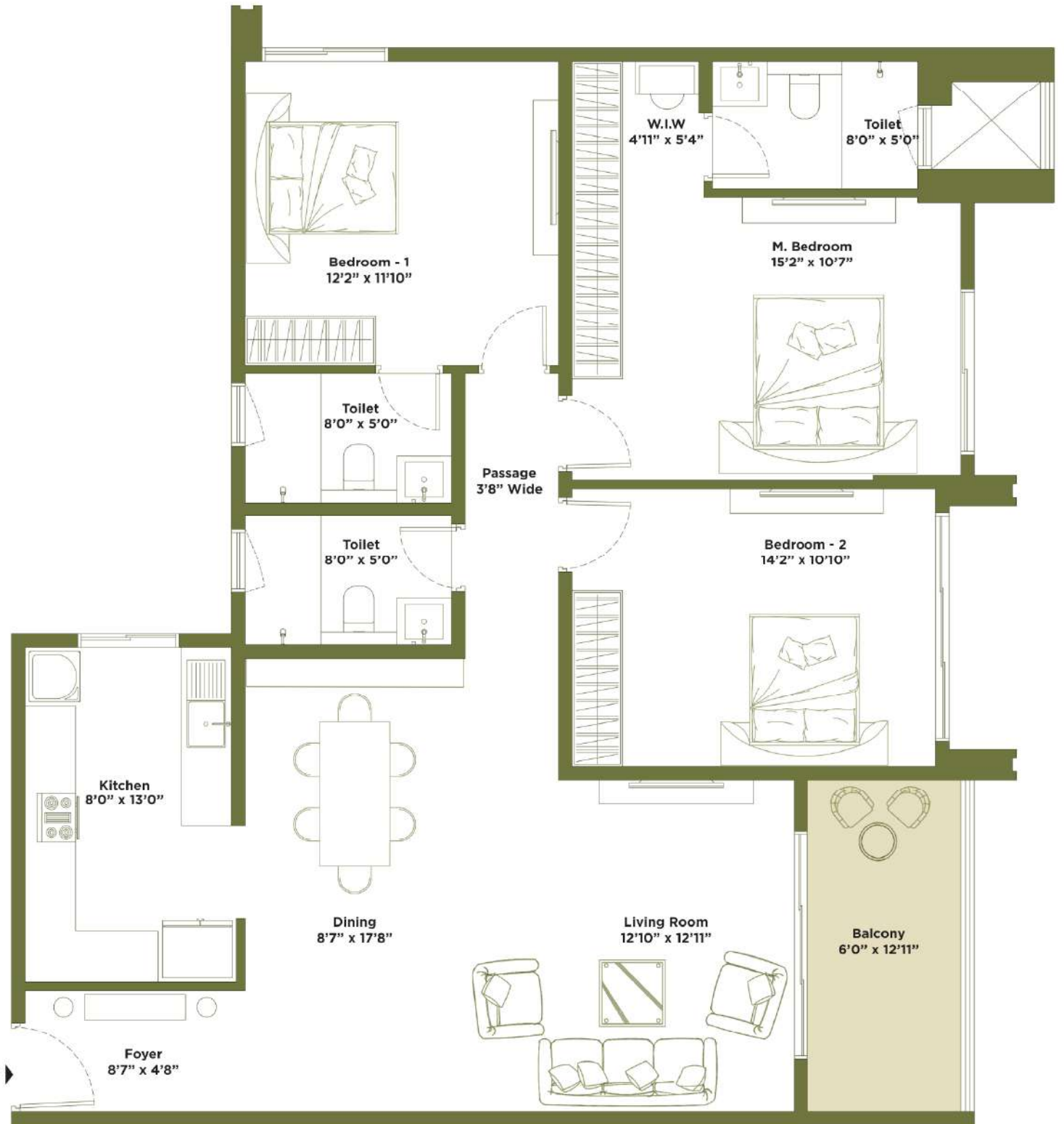
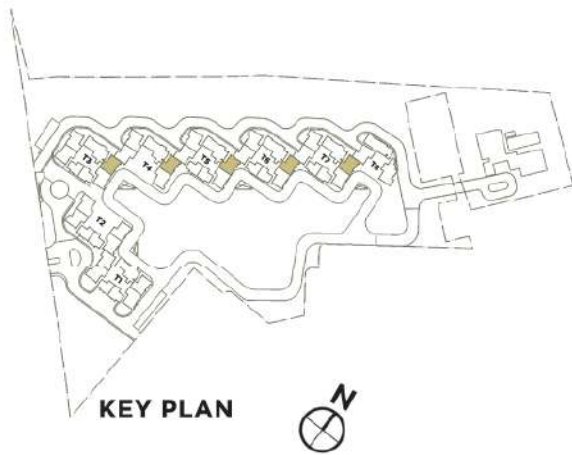
SUPER BUILT-UP AREA: 1837.53 SQFT
CARPET AREA: 1331.29 SQFT
FACING: EAST



TOWER T3, T4, T5, T6, T7

3 BEDROOM - B2

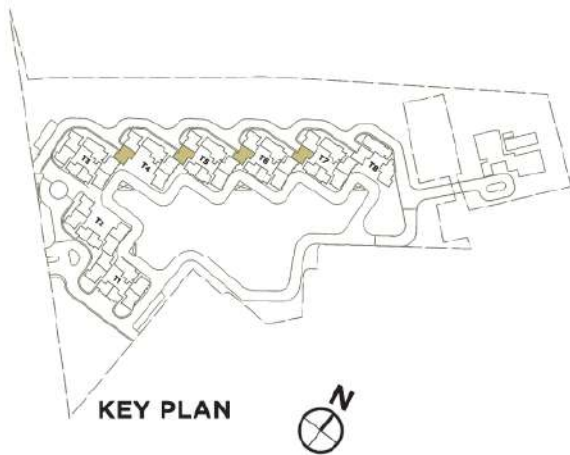
SUPER BUILT-UP AREA: 1750.30 SQFT
CARPET AREA: 1274.44 SQFT
FACING: WEST



TOWER T4, T5, T6, T7

3 BEDROOM - B8

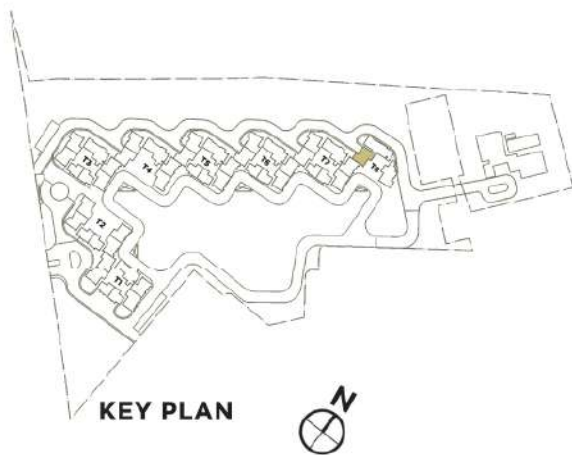
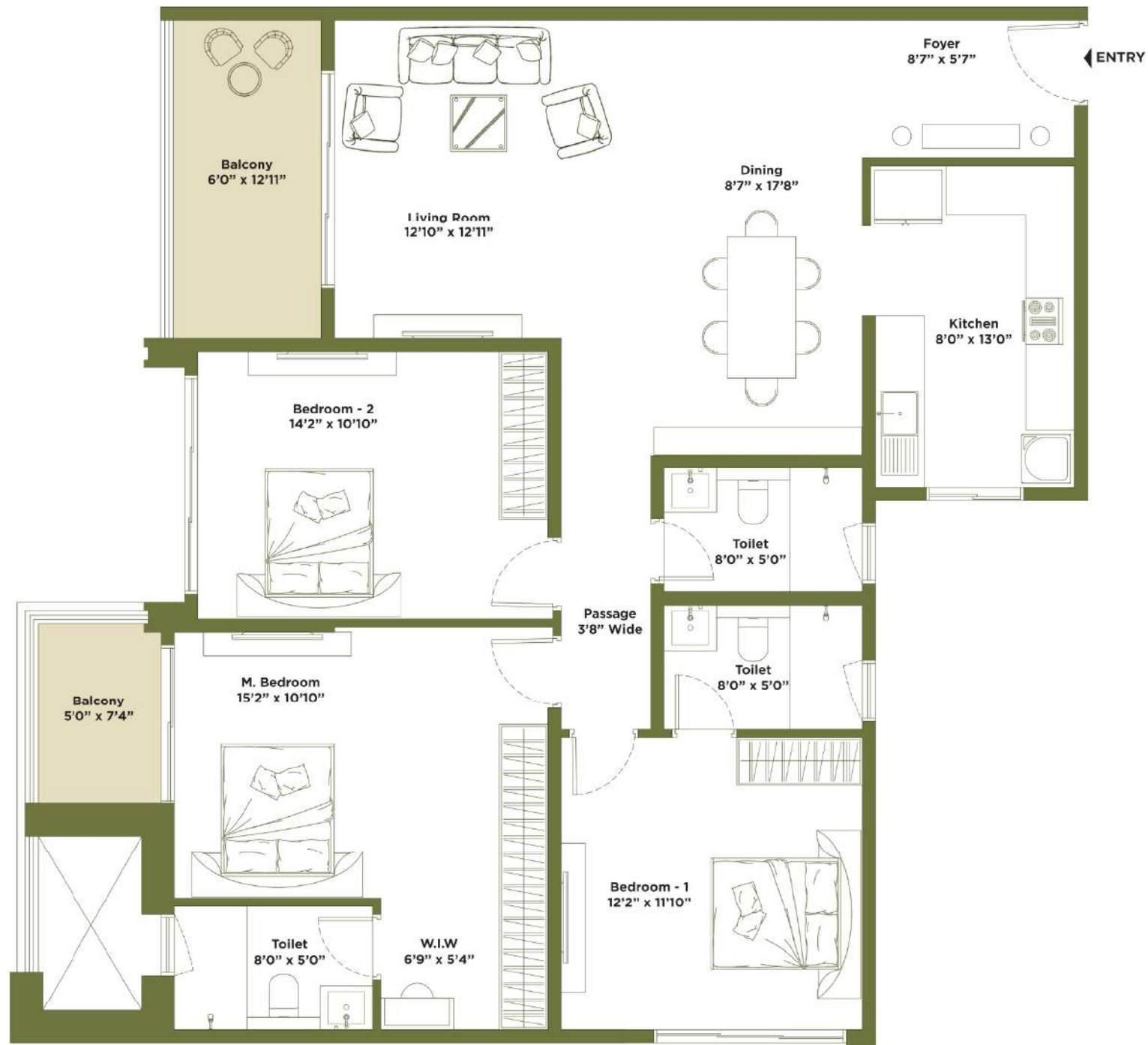
SUPER BUILT-UP AREA: 1837.53 SQFT
CARPET AREA: 1331.29 SQFT
FACING: EAST



TOWER T8

3 BEDROOM - B9

SUPER BUILT-UP AREA: 1836.43 SQFT
CARPET AREA: 1331.29 SQFT
FACING: EAST



KEY PLAN



4 BHK RESIDENCES

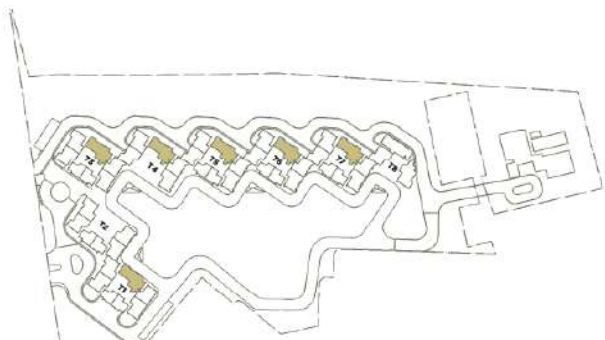
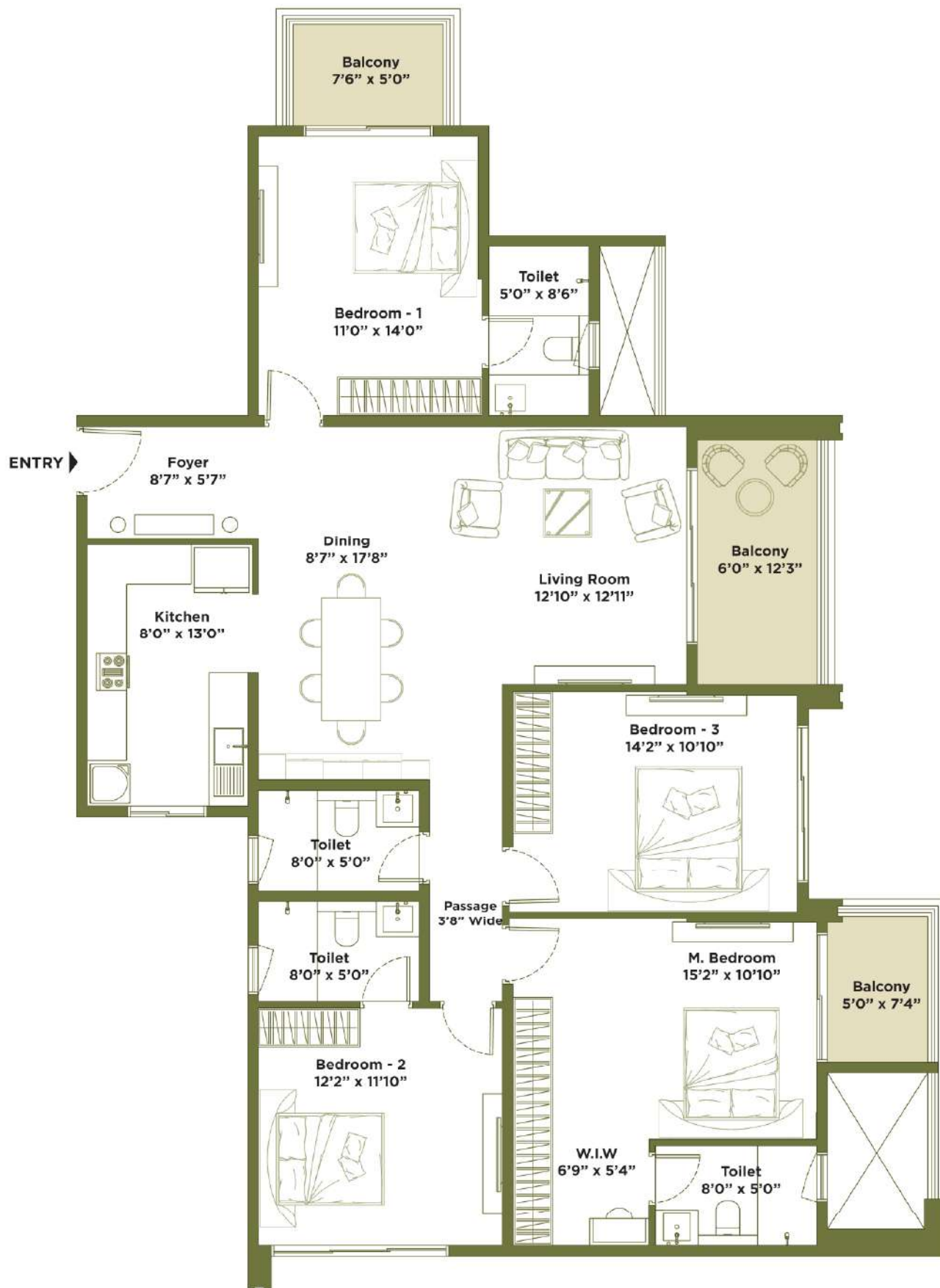
TOWER T8

4 BEDROOM - C1

SUPER BUILT-UP AREA: 2203.55 SQFT

CARPET AREA: 1581.97 SQFT

FACING: WEST



KEY PLAN



TOWER T1, T3, T4, T5, T6, T7

4 BEDROOM - C2

SUPER BUILT-UP AREA: 2570.8 SQFT

CARPET AREA: 1853 SQFT

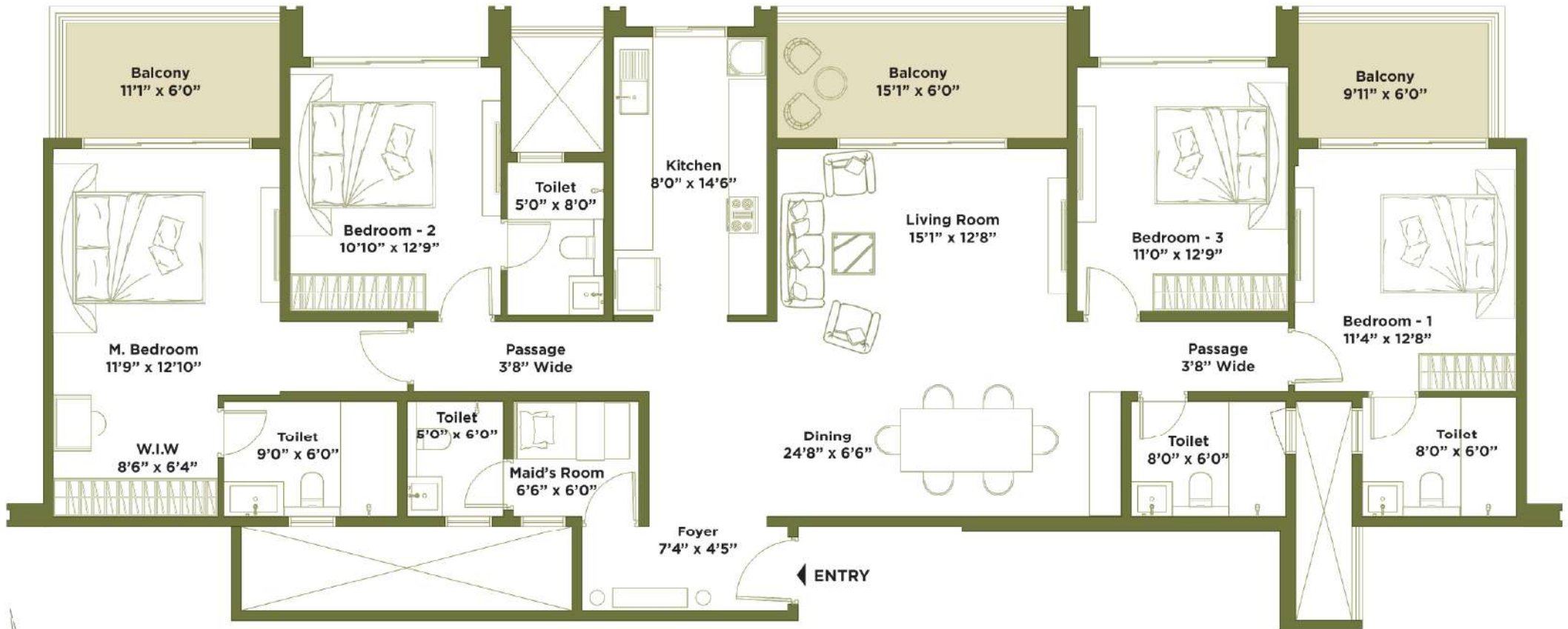
FACING: EAST



TOWER T2, T3, T4, T5, T6, T7

4 BEDROOM - C3

SUPER BUILT-UP AREA: 2577.56 SQFT
CARPET AREA: 1868.40 SQFT
FACING: EAST





Artist's Impression



Committed to the Good Life

For over three decades, Embassy Group has shaped iconic spaces across commercial, residential, hospitality, and industrial sectors in India and overseas. With over 64 million sq. ft. delivered and 28.85 million sq. ft. ongoing, the brand's legacy is built on design excellence, sustainability, and trust.

At Embassy, the promise of the 'Good Life' is more than a philosophy — it's a lived experience reflected in every project, including Embassy Greenshore.





Artist's Impression



For any further queries,

📞 **+91 88800 50000**

✉ sales@embassygreenshore.com



RERA No.: PRM/KA/RERA/1250/303/PR/201125/008265

For further details, Visit www.rera.karnataka.gov.in

