

NO OF UNITS IN BLOCK A = 04 UNITS
 NO OF UNITS IN BLOCK B = 04 UNITS
 NO OF UNITS IN BLOCK C = 04 UNITS
 NO OF UNITS IN BLOCK D = 04 UNITS
 TOTAL = 16 UNITS

2ND FLOOR PLAN (LV-6-55W)

NO OF UNITS IN BLOCK A = 04 UNITS
 NO OF UNITS IN BLOCK B = 04 UNITS
 NO OF UNITS IN BLOCK C = 04 UNITS
 NO OF UNITS IN BLOCK D = 04 UNITS
 TOTAL = 16 UNITS

2ND FLOOR PLAN (LV-6-55W)

NO OF UNITS IN BLOCK A = 04 UNITS
 NO OF UNITS IN BLOCK B = 04 UNITS
 NO OF UNITS IN BLOCK C = 04 UNITS
 NO OF UNITS IN BLOCK D = 04 UNITS
 TOTAL = 16 UNITS

2ND FLOOR PLAN (LV-6-55W)

NO OF UNITS IN BLOCK A = 04 UNITS
 NO OF UNITS IN BLOCK B = 04 UNITS
 NO OF UNITS IN BLOCK C = 04 UNITS
 NO OF UNITS IN BLOCK D = 04 UNITS
 TOTAL = 16 UNITS

2ND FLOOR PLAN (LV-6-55W)

NO OF UNITS IN BLOCK A = 04 UNITS
 NO OF UNITS IN BLOCK B = 04 UNITS
 NO OF UNITS IN BLOCK C = 04 UNITS
 NO OF UNITS IN BLOCK D = 04 UNITS
 TOTAL = 16 UNITS

2ND FLOOR PLAN (LV-6-55W)

NO OF UNITS IN BLOCK A = 04 UNITS
 NO OF UNITS IN BLOCK B = 04 UNITS
 NO OF UNITS IN BLOCK C = 04 UNITS
 NO OF UNITS IN BLOCK D = 04 UNITS
 TOTAL = 16 UNITS

2ND FLOOR PLAN (LV-6-55W)

NO OF UNITS IN BLOCK A = 04 UNITS
 NO OF UNITS IN BLOCK B = 04 UNITS
 NO OF UNITS IN BLOCK C = 04 UNITS
 NO OF UNITS IN BLOCK D = 04 UNITS
 TOTAL = 16 UNITS

2ND FLOOR PLAN (LV-6-55W)

NO OF UNITS IN BLOCK A = 04 UNITS
 NO OF UNITS IN BLOCK B = 04 UNITS
 NO OF UNITS IN BLOCK C = 04 UNITS
 NO OF UNITS IN BLOCK D = 04 UNITS
 TOTAL = 16 UNITS

2ND FLOOR PLAN (LV-6-55W)

NO OF UNITS IN BLOCK A = 04 UNITS
 NO OF UNITS IN BLOCK B = 04 UNITS
 NO OF UNITS IN BLOCK C = 04 UNITS
 NO OF UNITS IN BLOCK D = 04 UNITS
 TOTAL = 16 UNITS

2ND FLOOR PLAN (LV-6-55W)

NO OF UNITS IN BLOCK A = 04 UNITS
 NO OF UNITS IN BLOCK B = 04 UNITS
 NO OF UNITS IN BLOCK C = 04 UNITS
 NO OF UNITS IN BLOCK D = 04 UNITS
 TOTAL = 16 UNITS

2ND FLOOR PLAN (LV-6-55W)

NO OF UNITS IN BLOCK A = 04 UNITS
 NO OF UNITS IN BLOCK B = 04 UNITS
 NO OF UNITS IN BLOCK C = 04 UNITS
 NO OF UNITS IN BLOCK D = 04 UNITS
 TOTAL = 16 UNITS

2ND FLOOR PLAN (LV-6-55W)

NO OF UNITS IN BLOCK A = 04 UNITS
 NO OF UNITS IN BLOCK B = 04 UNITS
 NO OF UNITS IN BLOCK C = 04 UNITS
 NO OF UNITS IN BLOCK D = 04 UNITS
 TOTAL = 16 UNITS

2ND FLOOR PLAN (LV-6-55W)

NO OF UNITS IN BLOCK A = 04 UNITS
 NO OF UNITS IN BLOCK B = 04 UNITS
 NO OF UNITS IN BLOCK C = 04 UNITS
 NO OF UNITS IN BLOCK D = 04 UNITS
 TOTAL = 16 UNITS

2ND FLOOR PLAN (LV-6-55W)

NO OF UNITS IN BLOCK A = 04 UNITS
 NO OF UNITS IN BLOCK B = 04 UNITS
 NO OF UNITS IN BLOCK C = 04 UNITS
 NO OF UNITS IN BLOCK D = 04 UNITS
 TOTAL = 16 UNITS

2ND FLOOR PLAN (LV-6-55W)

NO OF UNITS IN BLOCK A = 04 UNITS
 NO OF UNITS IN BLOCK B = 04 UNITS
 NO OF UNITS IN BLOCK C = 04 UNITS
 NO OF UNITS IN BLOCK D = 04 UNITS
 TOTAL = 16 UNITS

2ND FLOOR PLAN (LV-6-55W)

NO OF UNITS IN BLOCK A = 04 UNITS
 NO OF UNITS IN BLOCK B = 04 UNITS
 NO OF UNITS IN BLOCK C = 04 UNITS
 NO OF UNITS IN BLOCK D = 04 UNITS
 TOTAL = 16 UNITS

2ND FLOOR PLAN (LV-6-55W)

NO OF UNITS IN BLOCK A = 04 UNITS
 NO OF UNITS IN BLOCK B = 04 UNITS
 NO OF UNITS IN BLOCK C = 04 UNITS
 NO OF UNITS IN BLOCK D = 04 UNITS
 TOTAL = 16 UNITS

2ND FLOOR PLAN (LV-6-55W)

NO OF UNITS IN BLOCK A = 04 UNITS
 NO OF UNITS IN BLOCK B = 04 UNITS
 NO OF UNITS IN BLOCK C = 04 UNITS
 NO OF UNITS IN BLOCK D = 04 UNITS
 TOTAL = 16 UNITS

2ND FLOOR PLAN (LV-6-55W)

NO OF UNITS IN BLOCK A = 04 UNITS
 NO OF UNITS IN BLOCK B = 04 UNITS
 NO OF UNITS IN BLOCK C = 04 UNITS
 NO OF UNITS IN BLOCK D = 04 UNITS
 TOTAL = 16 UNITS

2ND FLOOR PLAN (LV-6-55W)

NO OF UNITS IN BLOCK A = 04 UNITS
 NO OF UNITS IN BLOCK B = 04 UNITS
 NO OF UNITS IN BLOCK C = 04 UNITS
 NO OF UNITS IN BLOCK D = 04 UNITS
 TOTAL = 16 UNITS

2ND FLOOR PLAN (LV-6-55W)

NO OF UNITS IN BLOCK A = 04 UNITS
 NO OF UNITS IN BLOCK B = 04 UNITS
 NO OF UNITS IN BLOCK C = 04 UNITS
 NO OF UNITS IN BLOCK D = 04 UNITS
 TOTAL = 16 UNITS

2ND FLOOR PLAN (LV-6-55W)

NO OF UNITS IN BLOCK A = 04 UNITS
 NO OF UNITS IN BLOCK B = 04 UNITS
 NO OF UNITS IN BLOCK C = 04 UNITS
 NO OF UNITS IN BLOCK D = 04 UNITS
 TOTAL = 16 UNITS

2ND FLOOR PLAN (LV-6-55W)

NO OF UNITS IN BLOCK A = 04 UNITS
 NO OF UNITS IN BLOCK B = 04 UNITS
 NO OF UNITS IN BLOCK C = 04 UNITS
 NO OF UNITS IN BLOCK D = 04 UNITS
 TOTAL = 16 UNITS

2ND FLOOR PLAN (LV-6-55W)

NO OF UNITS IN BLOCK A = 04 UNITS
 NO OF UNITS IN BLOCK B = 04 UNITS
 NO OF UNITS IN BLOCK C = 04 UNITS
 NO OF UNITS IN BLOCK D = 04 UNITS
 TOTAL = 16 UNITS

2ND FLOOR PLAN (LV-6-55W)

NO OF UNITS IN BLOCK A = 04 UNITS
 NO OF UNITS IN BLOCK B = 04 UNITS
 NO OF UNITS IN BLOCK C = 04 UNITS
 NO OF UNITS IN BLOCK D = 04 UNITS
 TOTAL = 16 UNITS

- 1) 2nd floor plan showing the layout of the apartment units, including bedrooms, living/dining areas, kitchens, bathrooms, and toilets. The plan also shows the location of the staircase and lift.
- 2) The plan is drawn to a scale of 1:100 and is based on the site plan and other relevant documents.
- 3) The plan is subject to the approval of the relevant authorities.
- 4) The plan is drawn in accordance with the relevant building codes and standards.
- 5) The plan is drawn to show the overall layout of the building and the location of the various rooms and areas.
- 6) The plan is drawn to show the dimensions of the rooms and areas and the location of the doors and windows.
- 7) The plan is drawn to show the location of the staircase and lift and the location of the other common areas.
- 8) The plan is drawn to show the location of the setbacks and the location of the lake buffer line.
- 9) The plan is drawn to show the location of the other relevant features and areas.
- 10) The plan is drawn to show the overall layout of the building and the location of the various rooms and areas.
- 11) The plan is drawn to show the dimensions of the rooms and areas and the location of the doors and windows.
- 12) The plan is drawn to show the location of the staircase and lift and the location of the other common areas.
- 13) The plan is drawn to show the location of the setbacks and the location of the lake buffer line.
- 14) The plan is drawn to show the location of the other relevant features and areas.
- 15) The plan is drawn to show the overall layout of the building and the location of the various rooms and areas.
- 16) The plan is drawn to show the dimensions of the rooms and areas and the location of the doors and windows.
- 17) The plan is drawn to show the location of the staircase and lift and the location of the other common areas.
- 18) The plan is drawn to show the location of the setbacks and the location of the lake buffer line.
- 19) The plan is drawn to show the location of the other relevant features and areas.
- 20) The plan is drawn to show the overall layout of the building and the location of the various rooms and areas.
- 21) The plan is drawn to show the dimensions of the rooms and areas and the location of the doors and windows.
- 22) The plan is drawn to show the location of the staircase and lift and the location of the other common areas.
- 23) The plan is drawn to show the location of the setbacks and the location of the lake buffer line.
- 24) The plan is drawn to show the location of the other relevant features and areas.
- 25) The plan is drawn to show the overall layout of the building and the location of the various rooms and areas.
- 26) The plan is drawn to show the dimensions of the rooms and areas and the location of the doors and windows.
- 27) The plan is drawn to show the location of the staircase and lift and the location of the other common areas.
- 28) The plan is drawn to show the location of the setbacks and the location of the lake buffer line.
- 29) The plan is drawn to show the location of the other relevant features and areas.
- 30) The plan is drawn to show the overall layout of the building and the location of the various rooms and areas.
- 31) The plan is drawn to show the dimensions of the rooms and areas and the location of the doors and windows.
- 32) The plan is drawn to show the location of the staircase and lift and the location of the other common areas.
- 33) The plan is drawn to show the location of the setbacks and the location of the lake buffer line.
- 34) The plan is drawn to show the location of the other relevant features and areas.
- 35) The plan is drawn to show the overall layout of the building and the location of the various rooms and areas.

ARCHITECTS SIGNATURE:
 N. GANESH, B.E., ARCH.
 Road No. 10, C/O B. Lakshmi, 43/917-18
 K.N.H.T.
 DATE: 11/01/18
 SCALE: 1:100

OWNERS SIGNATURE:
 M. B. MADHUSUDHANA RAO

SCHEDULE OF OPENINGS:

TYPE	SIZE	DESCRIPTION
TD	1.30 x 2.10	DOOR
MD	1.05 x 2.10	DOOR
D1	0.95 x 2.10	TOILET DOOR
D2	0.75 x 2.10	DOOR
SD	2.10 x 2.10	SLIDING DOOR
W	1.50 x 1.40	WINDOW
V	0.75 x 0.75	TOILET VENTILATOR

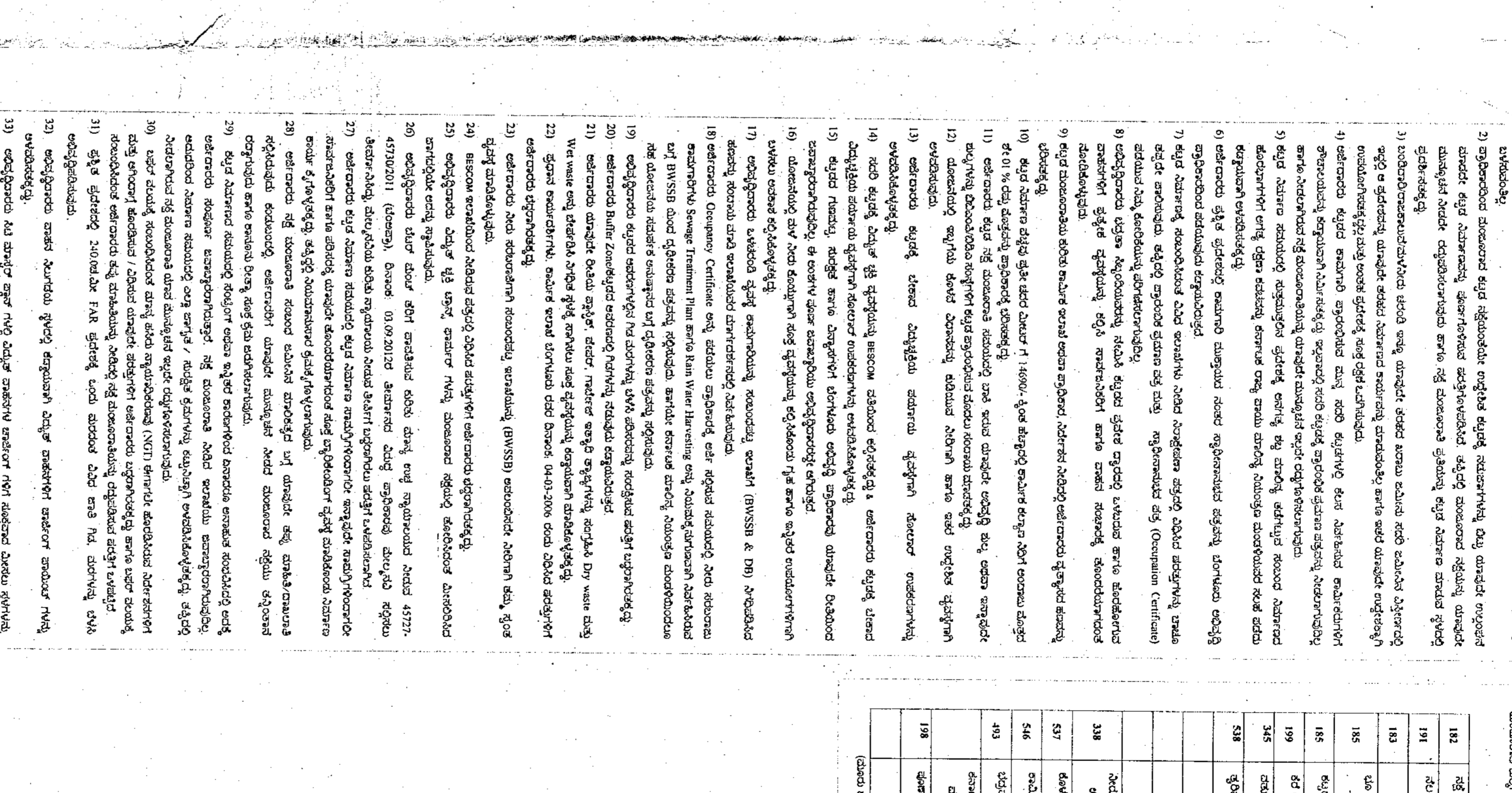
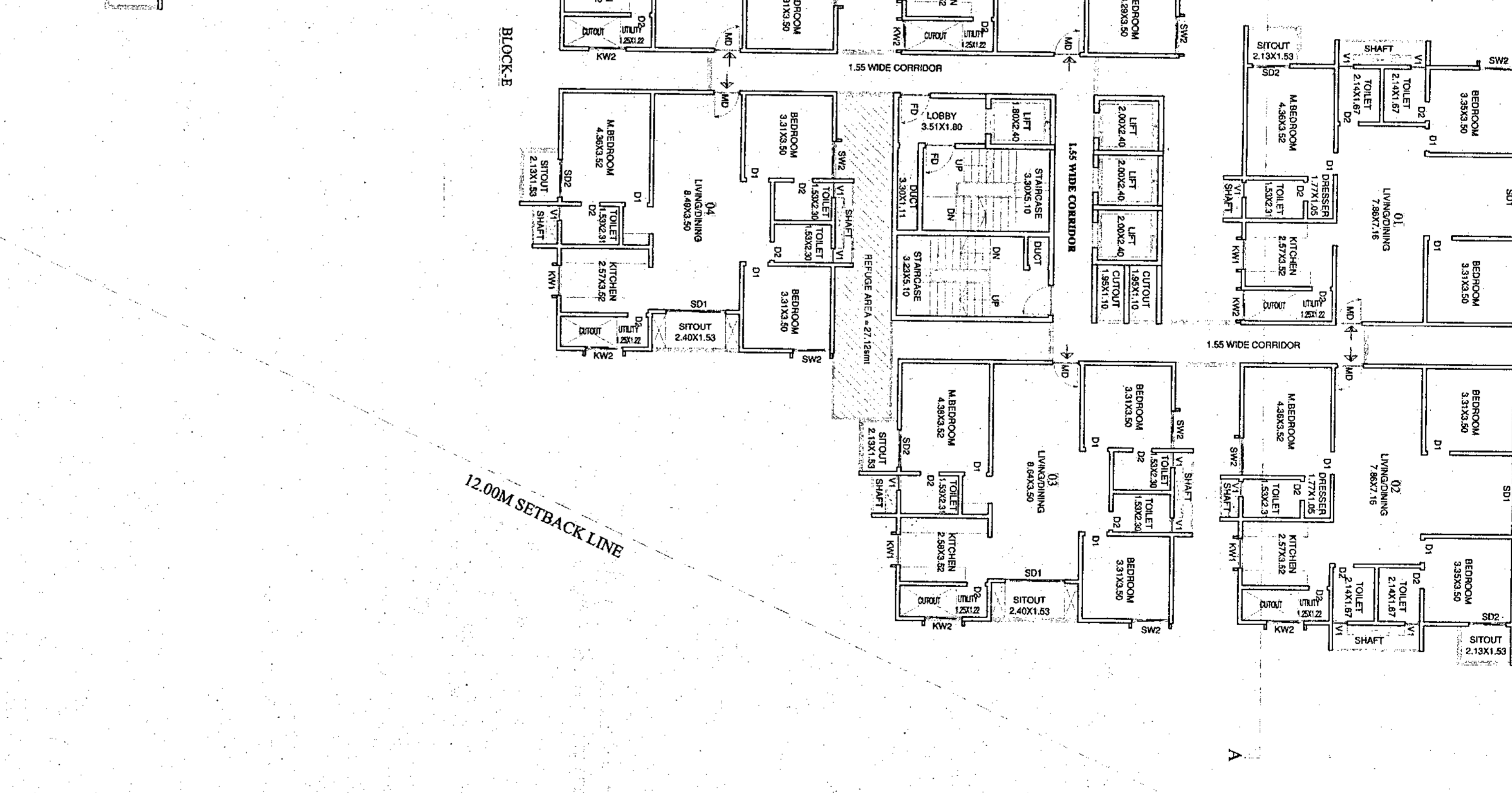
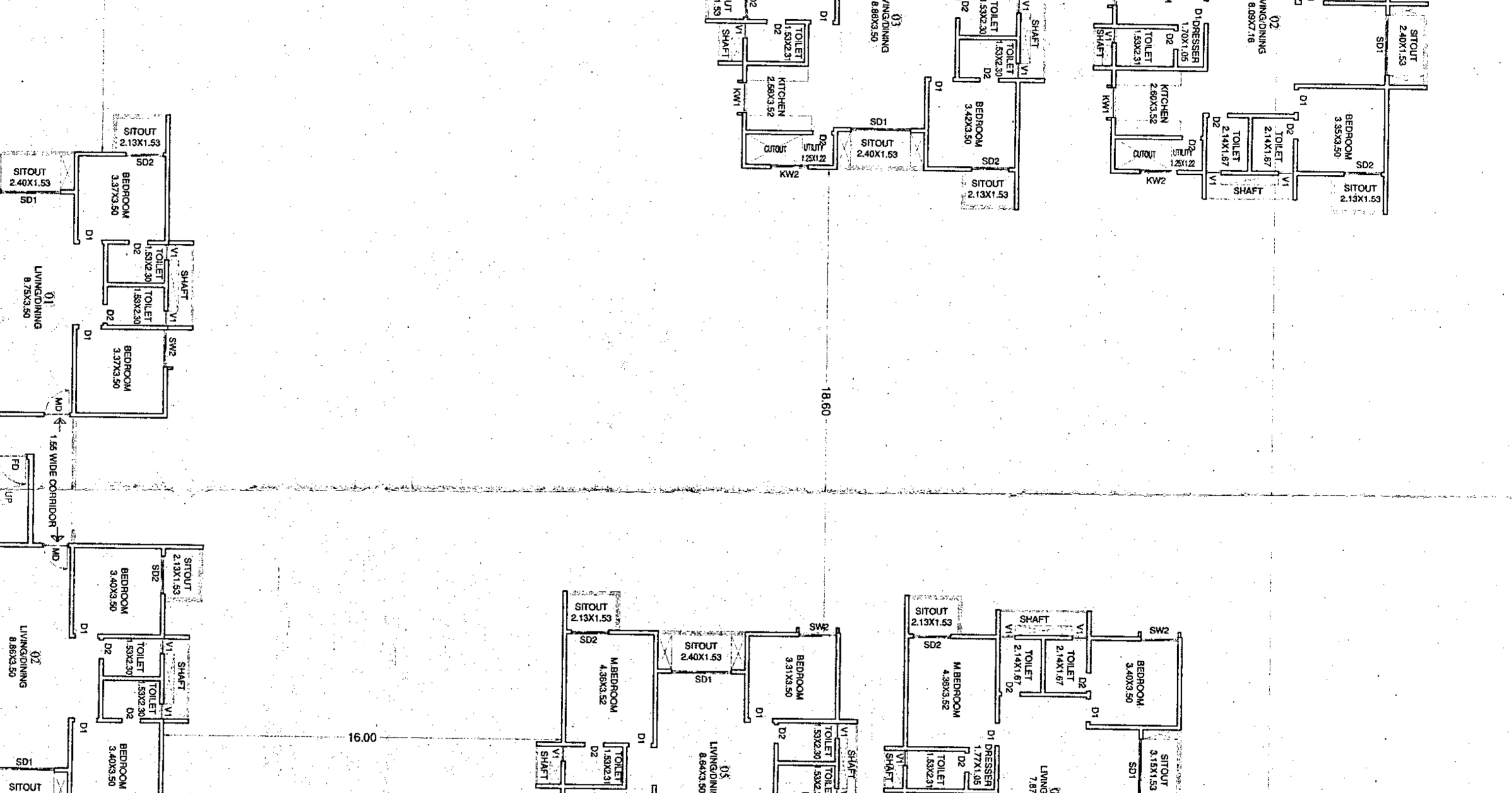
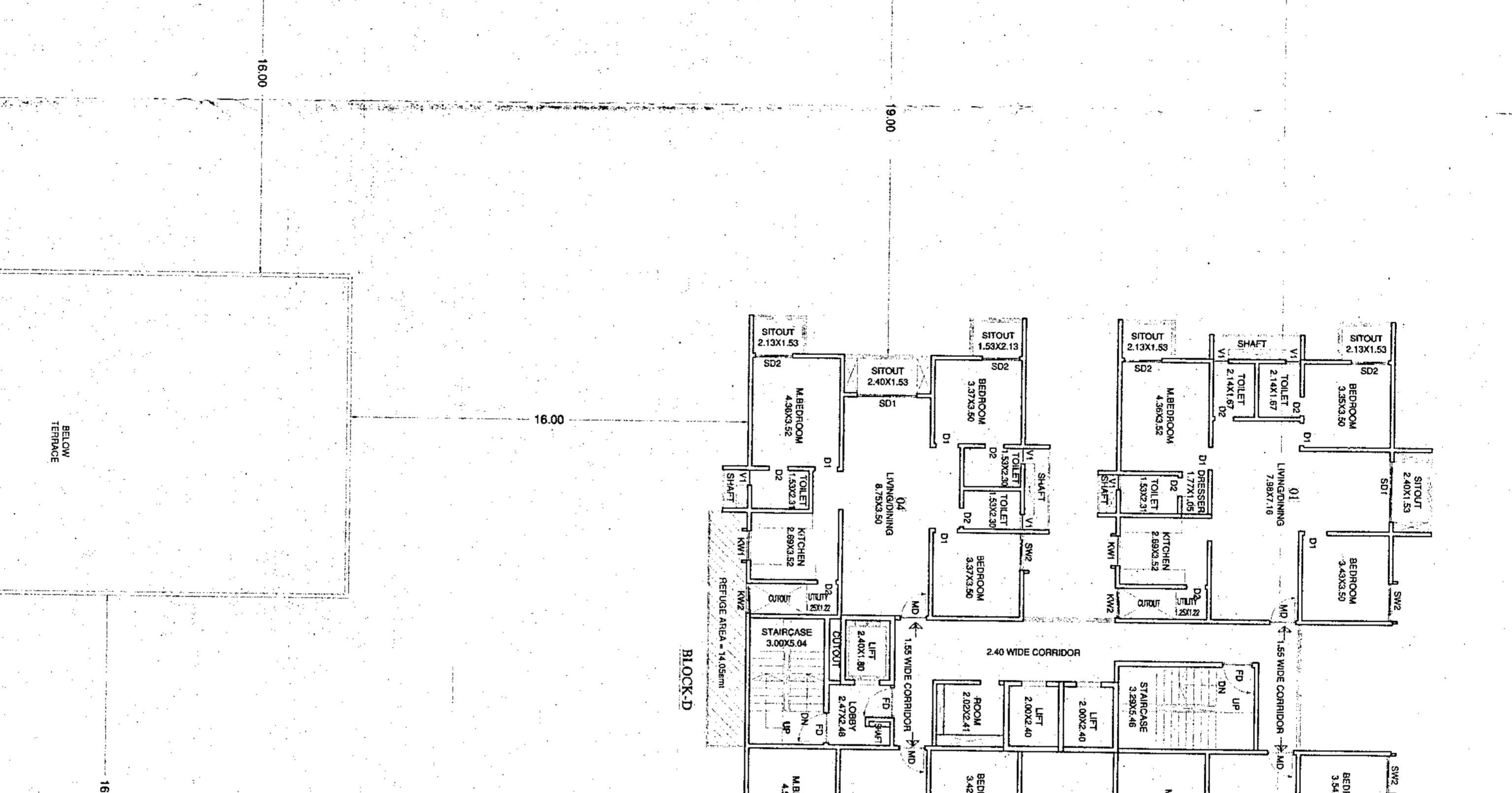
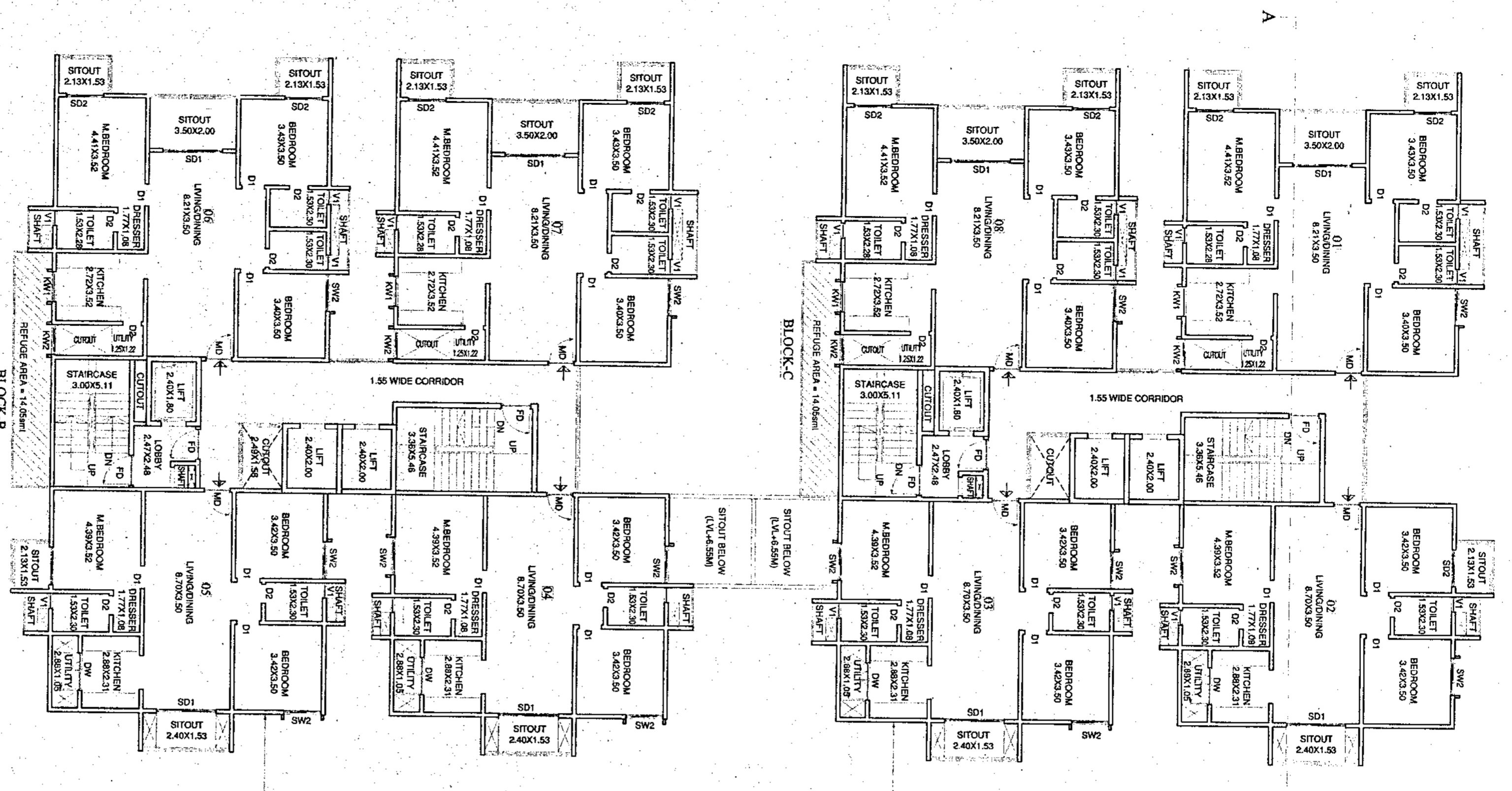
PROJECT TITLE:
 PROPOSED RESIDENTIAL APARTMENT BUILDING WITH ASSISTED BLOCK AT SY No. 561 & 562, BIDDAI KAPPAHARA VILLAGE, BANGALORE DISTRICT, KARNATAKA, INDIA.

DRAWING TITLE:
 2ND FLOOR PLAN

PLANNING AUTHORITY:
 BANGALORE DEVELOPMENT AUTHORITY
 K. Srinivas Reddy, Director
 Bangalore-560002

SHEET: 06 OF 12

30.00M LAKE BUFFER LINE



10TH FLOOR PLAN (1/14/24) (4/4)
 NO OF UNITS IN BLOCK A - 6 UNITS
 NO OF UNITS IN BLOCK B - 6 UNITS
 NO OF UNITS IN BLOCK C - 6 UNITS
 NO OF UNITS IN BLOCK D - 6 UNITS
 NO OF UNITS IN BLOCK E - 6 UNITS
 TOTAL - 30 UNITS

1) 10th floor plan showing the layout of the building, including the location of the rooms, corridors, and service areas.
 2) The plan is in accordance with the approved building plan and the relevant regulations.
 3) The plan shows the location of the rooms, corridors, and service areas, and the layout of the building.
 4) The plan is in accordance with the approved building plan and the relevant regulations.
 5) The plan shows the location of the rooms, corridors, and service areas, and the layout of the building.
 6) The plan is in accordance with the approved building plan and the relevant regulations.
 7) The plan shows the location of the rooms, corridors, and service areas, and the layout of the building.
 8) The plan is in accordance with the approved building plan and the relevant regulations.
 9) The plan shows the location of the rooms, corridors, and service areas, and the layout of the building.
 10) The plan is in accordance with the approved building plan and the relevant regulations.

Sl. No.	Description	Area (sq. m)
1	10th Floor Plan	4,471.20
2	10th Floor Plan	4,471.20
3	10th Floor Plan	4,471.20
4	10th Floor Plan	4,471.20
5	10th Floor Plan	4,471.20
6	10th Floor Plan	4,471.20
7	10th Floor Plan	4,471.20
8	10th Floor Plan	4,471.20
9	10th Floor Plan	4,471.20
10	10th Floor Plan	4,471.20

PROJECT TITLE:
 PROPOSED RESIDENTIAL APARTMENT BUILDING
 WITH 10TH FLOOR VILLAGE
 BIJAPUR, BANGALORE EAST TALUK, BANGALORE
 DISTRICT, KARNATAKA STATE

DATE: 14/04/2024

SCALE: 1:150

NON-SUB. BE. NO. 1/2024

Regd. Eng. B.C. 17/168-489/1-18

ARCHITECT'S SIGNATURE:
 M. B. RAJESHKUMAR, P.E.

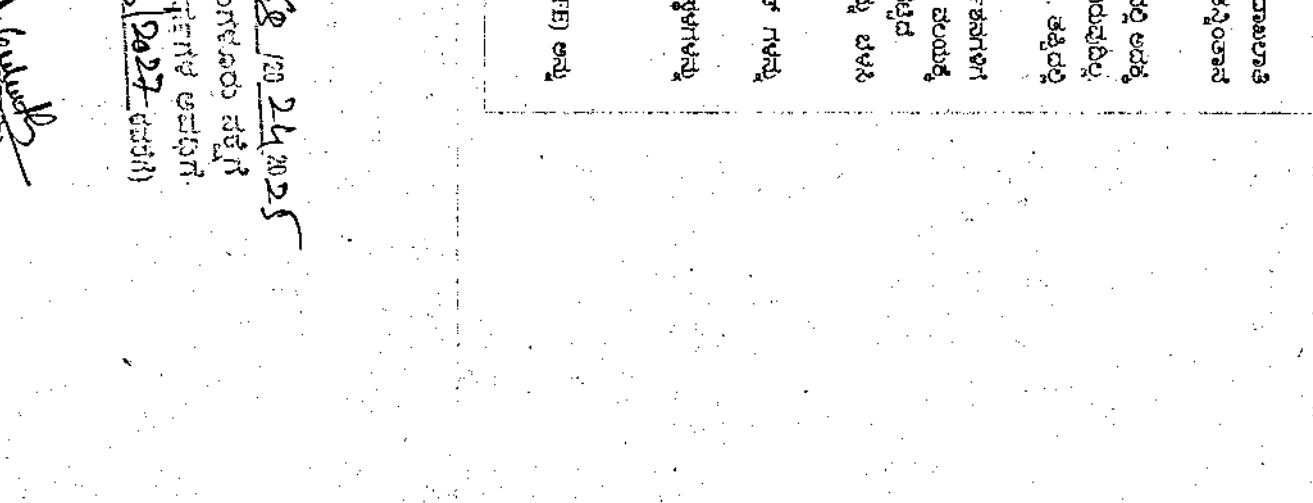
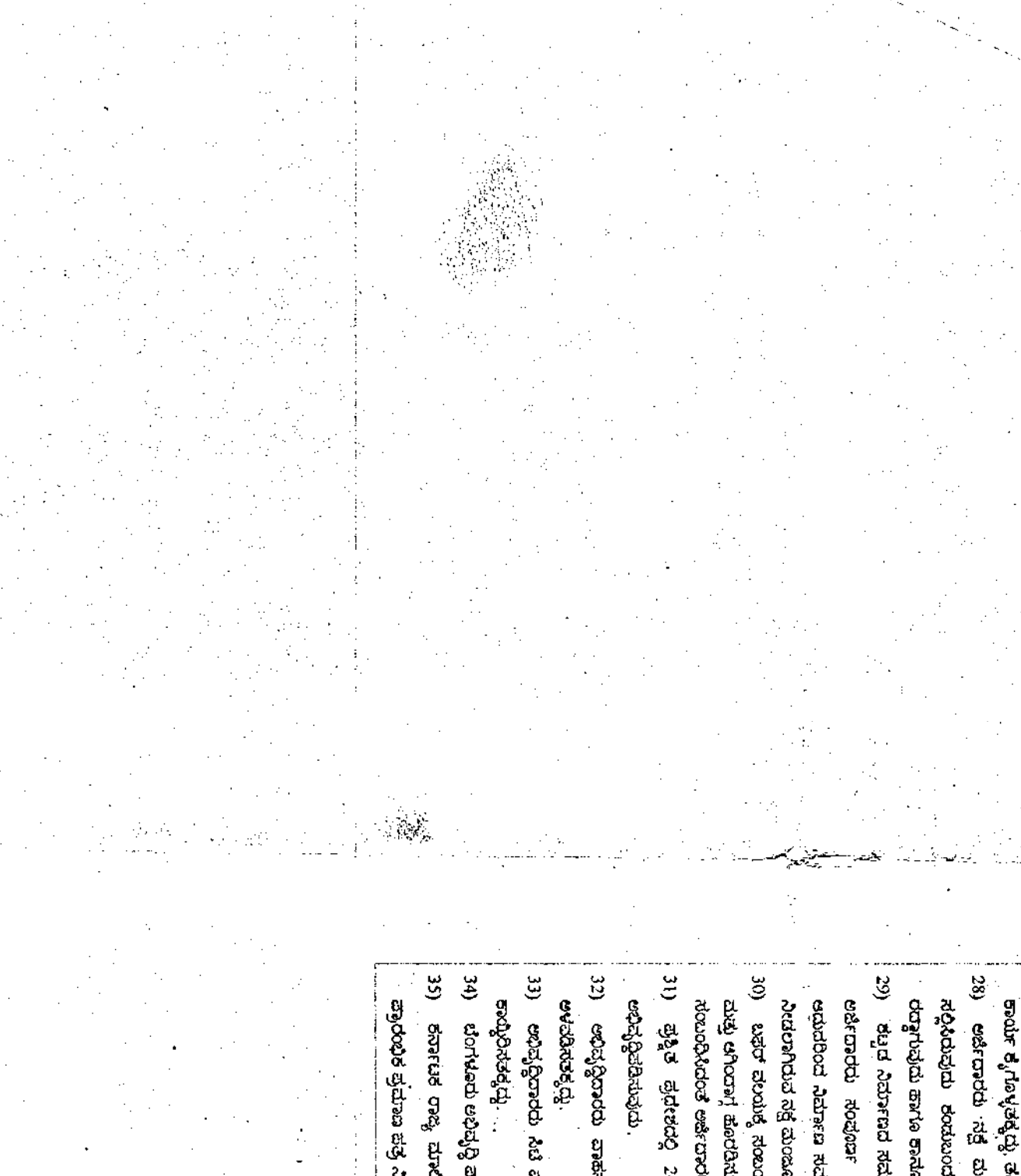
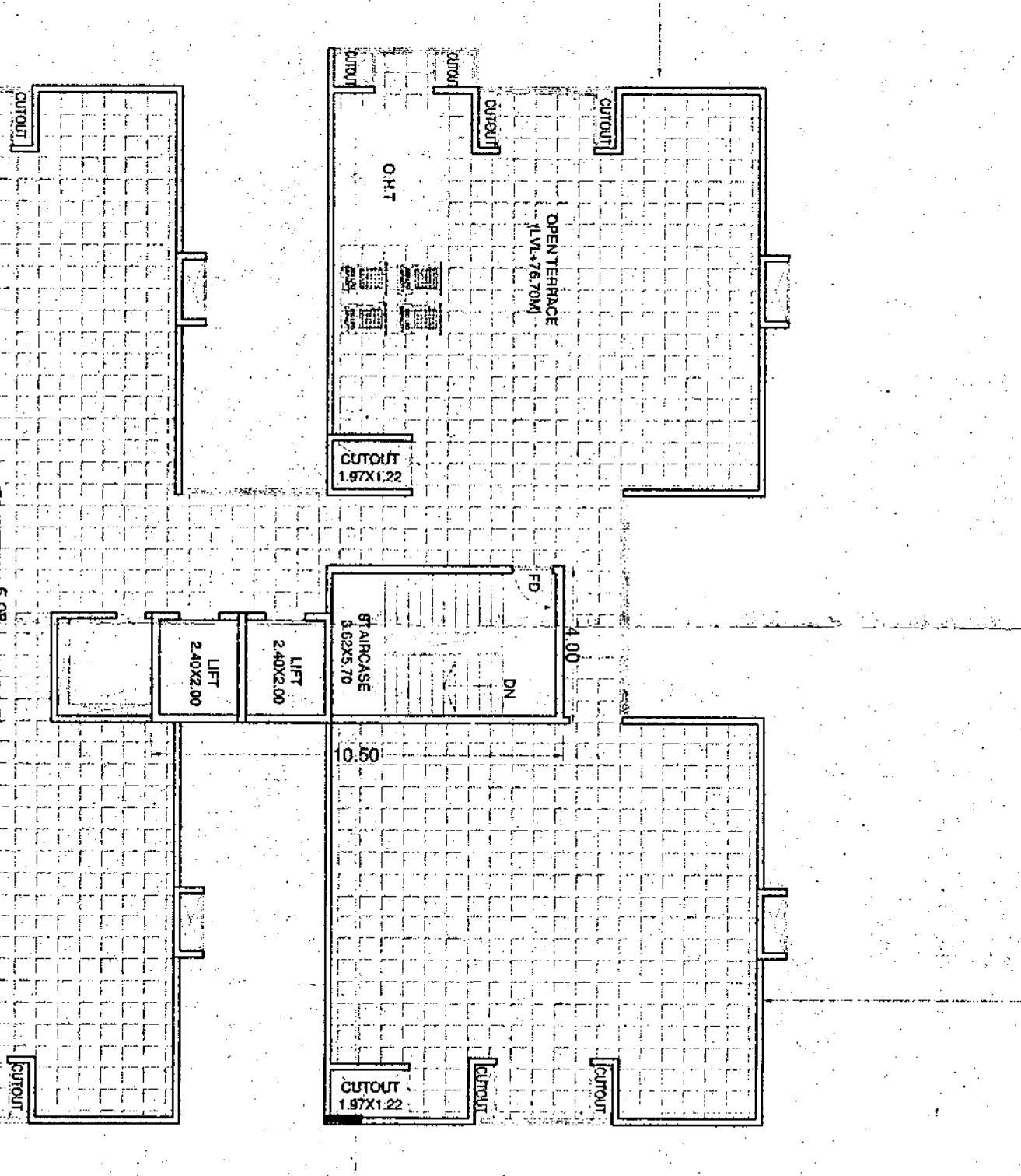
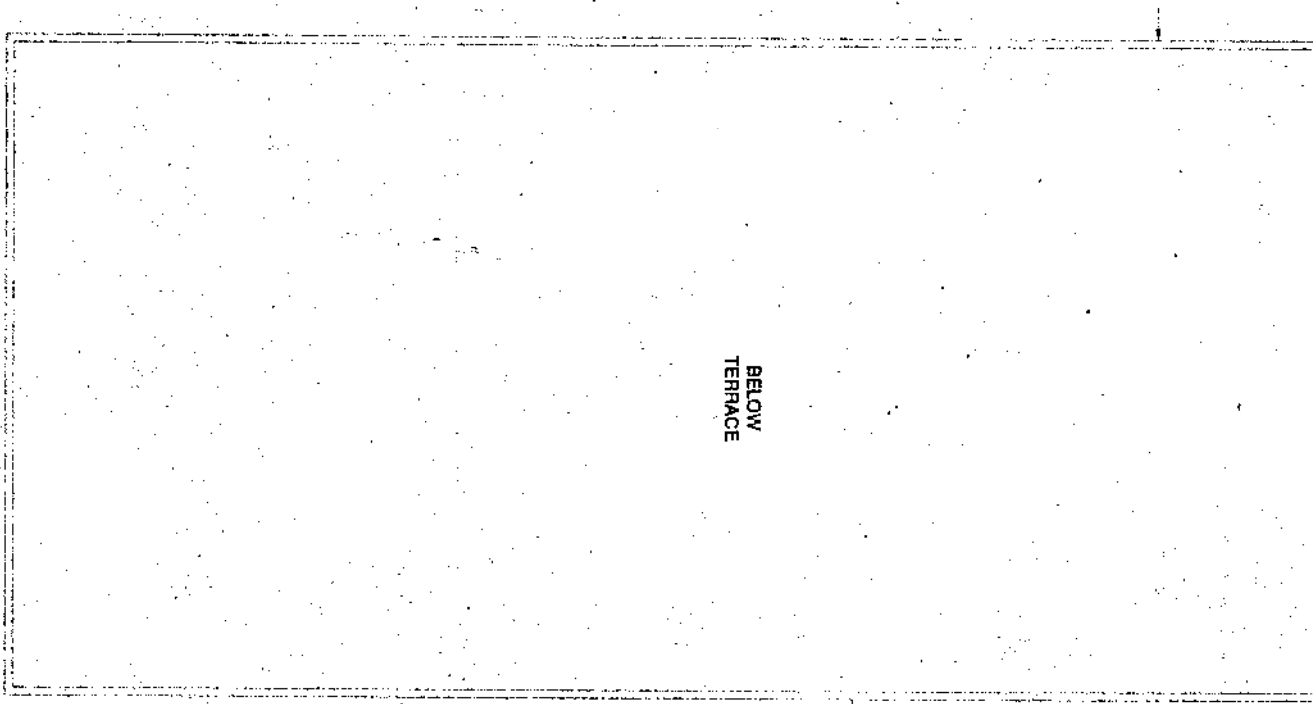
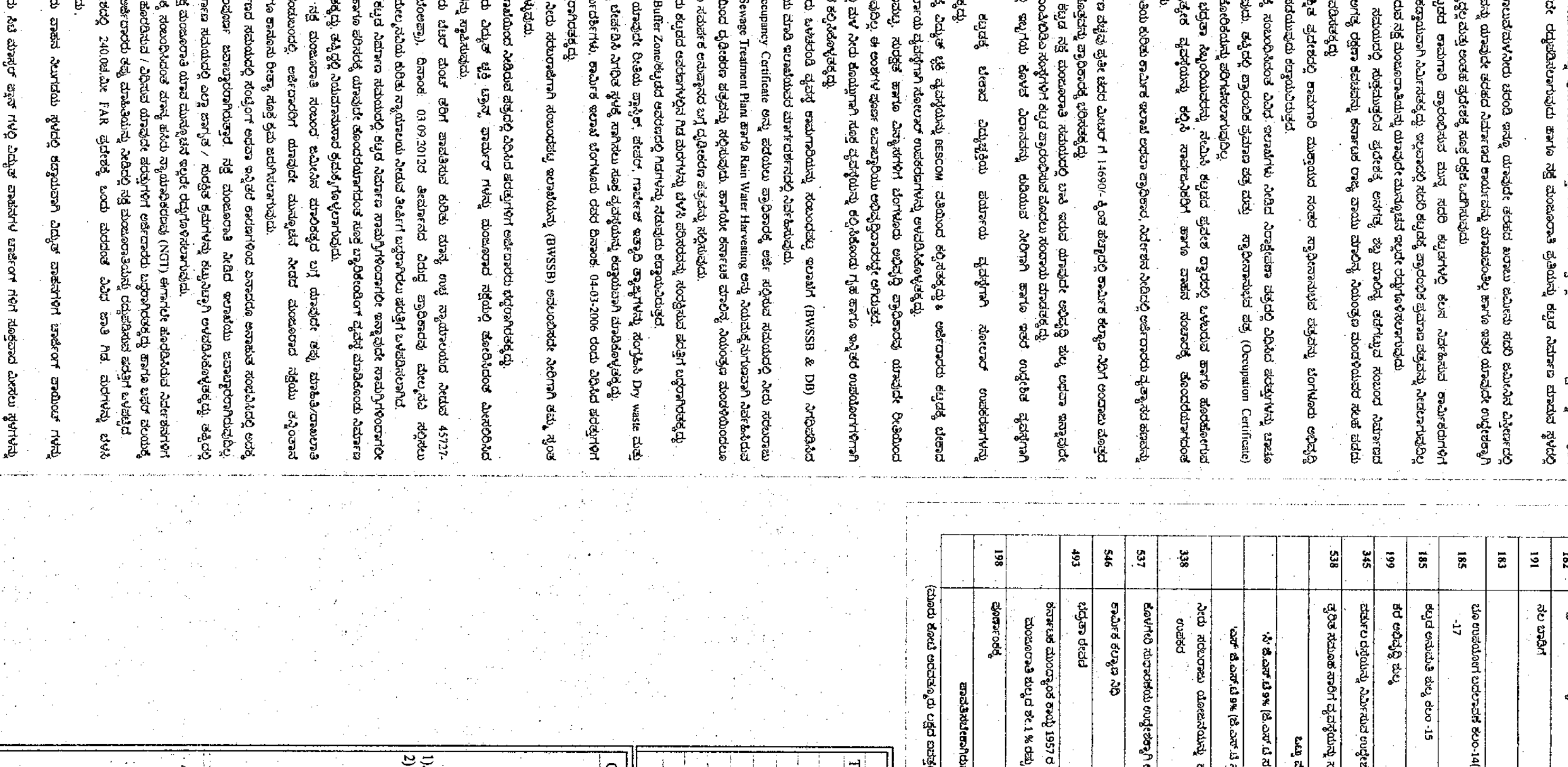
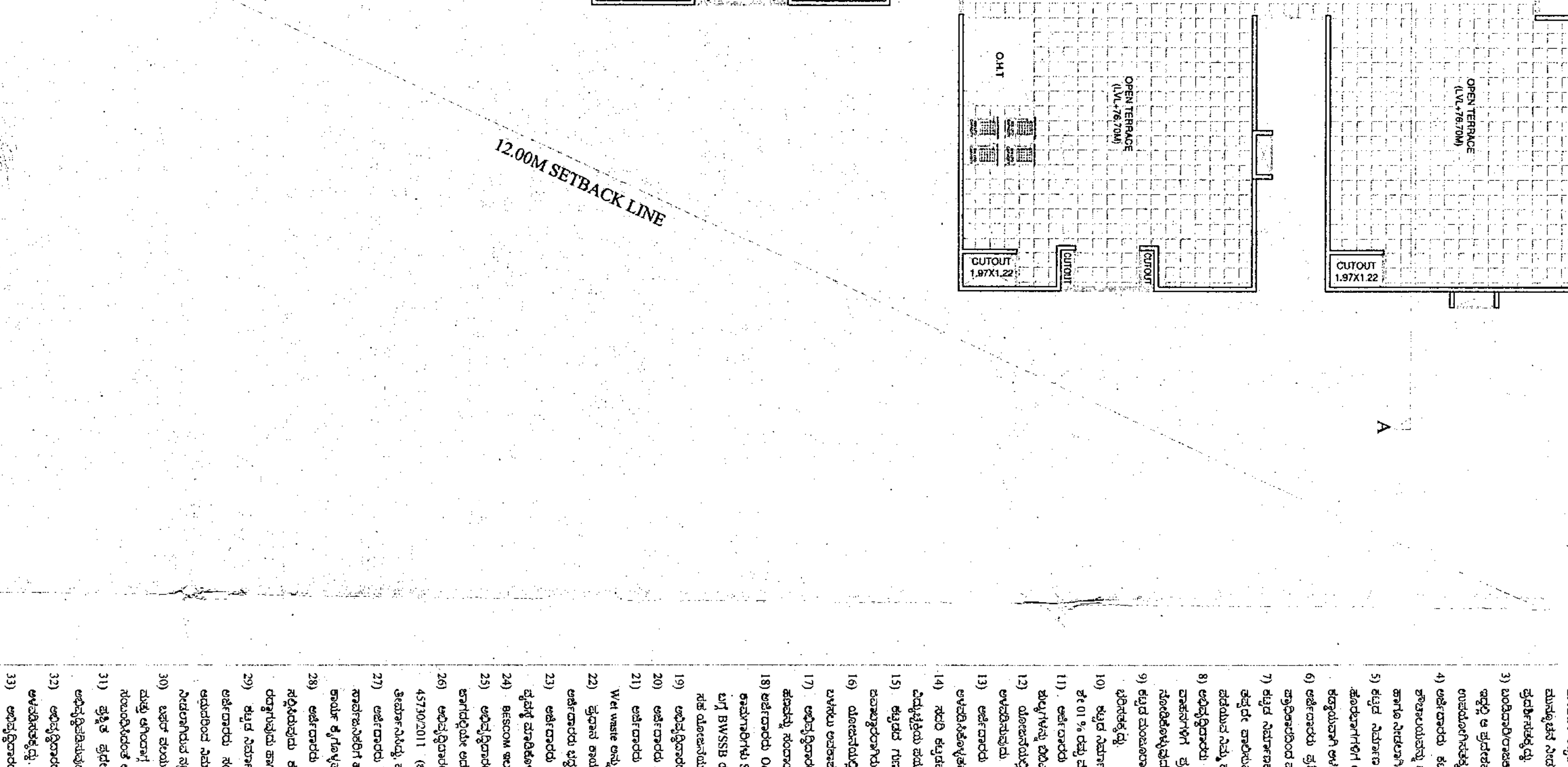
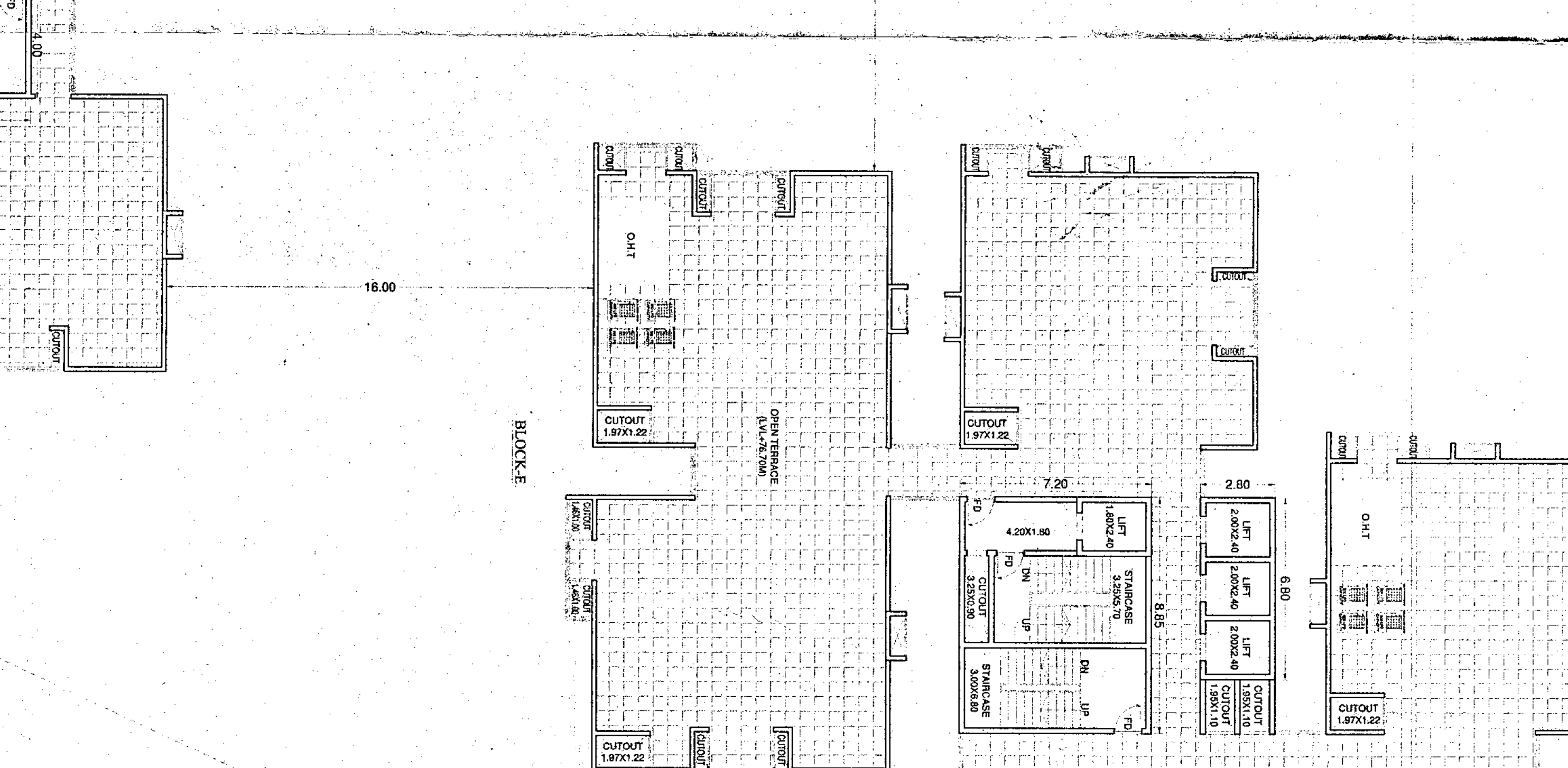
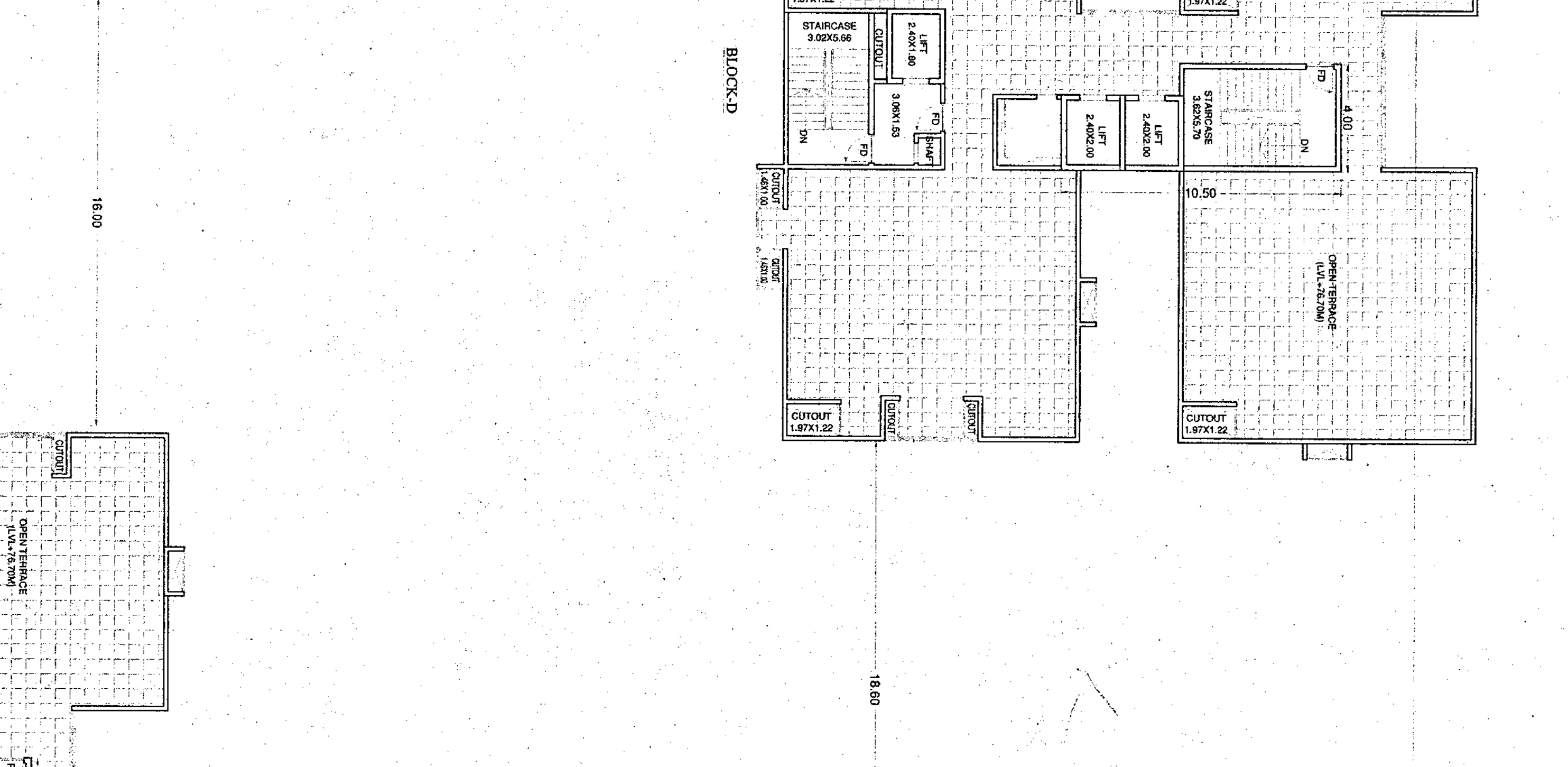
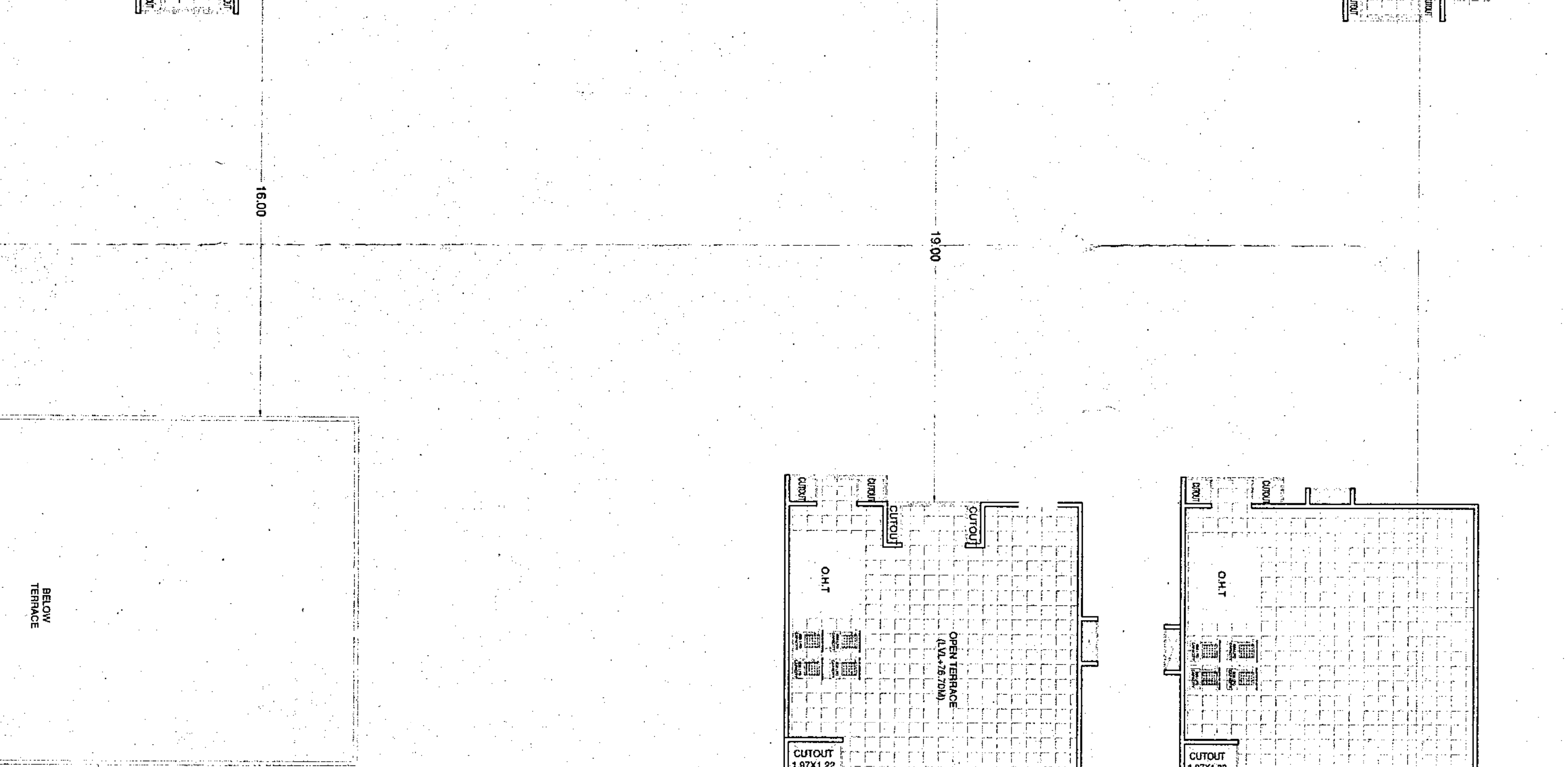
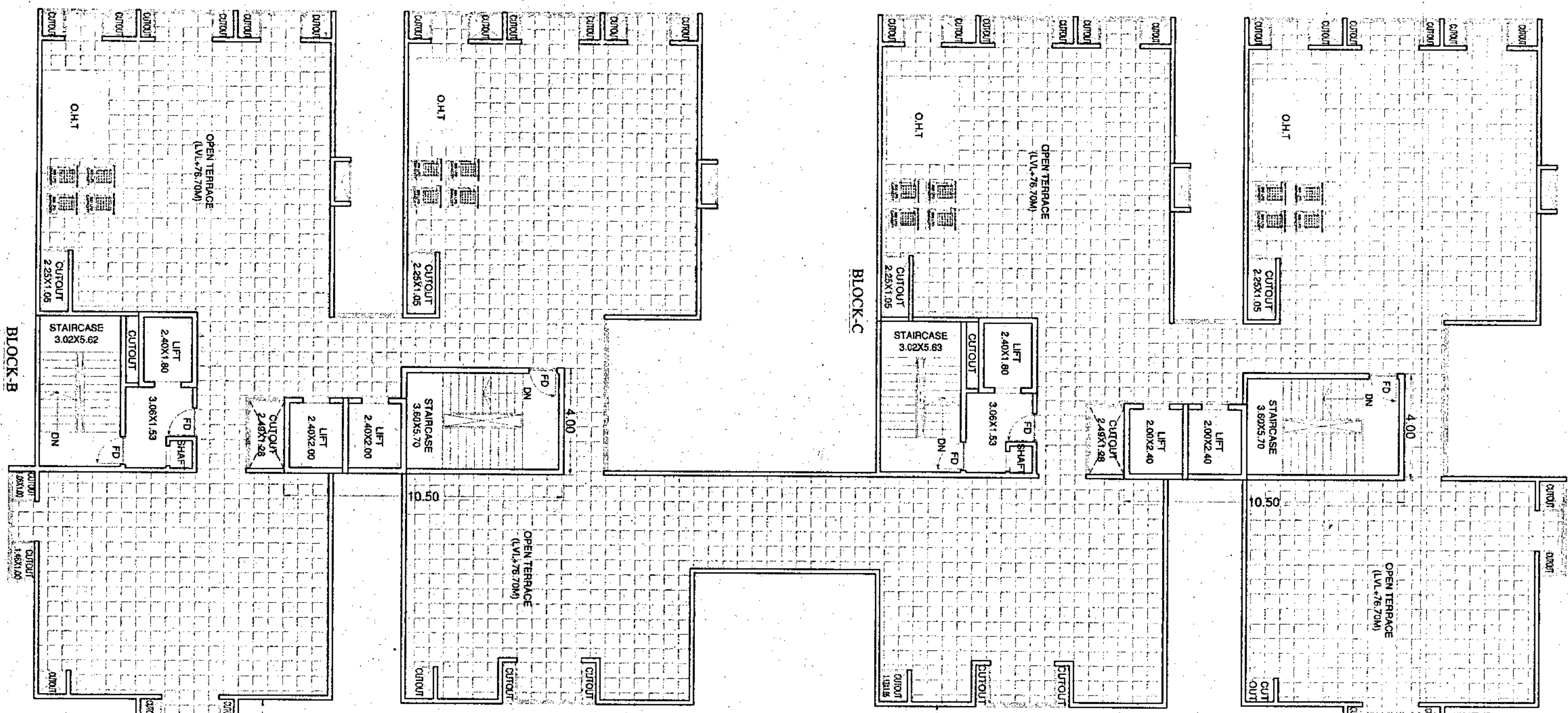
OWNERS SIGNATURE:
 M. B. RAJESHKUMAR, P.E.

PLANNING AUTHORITY:
 BANGALORE DEVELOPMENT AUTHORITY
 Kumbhar Hall, Bangalore-560002

PROJECT NO. 1/2024

SHEET - 09 OF 12

30.00M LAKE BUFFER LINE



PROJ. NO. 11/2024/11054/10

1) ডাটাবেস-এ প্রবেশের ক্ষমতা বৃদ্ধি করে দেওয়া হবে।
 2) ডাটাবেস-এ প্রবেশের ক্ষমতা বৃদ্ধি করে দেওয়া হবে।
 3) ডাটাবেস-এ প্রবেশের ক্ষমতা বৃদ্ধি করে দেওয়া হবে।
 4) ডাটাবেস-এ প্রবেশের ক্ষমতা বৃদ্ধি করে দেওয়া হবে।
 5) ডাটাবেস-এ প্রবেশের ক্ষমতা বৃদ্ধি করে দেওয়া হবে।
 6) ডাটাবেস-এ প্রবেশের ক্ষমতা বৃদ্ধি করে দেওয়া হবে।
 7) ডাটাবেস-এ প্রবেশের ক্ষমতা বৃদ্ধি করে দেওয়া হবে।
 8) ডাটাবেস-এ প্রবেশের ক্ষমতা বৃদ্ধি করে দেওয়া হবে।
 9) ডাটাবেস-এ প্রবেশের ক্ষমতা বৃদ্ধি করে দেওয়া হবে।
 10) ডাটাবেস-এ প্রবেশের ক্ষমতা বৃদ্ধি করে দেওয়া হবে।
 11) ডাটাবেস-এ প্রবেশের ক্ষমতা বৃদ্ধি করে দেওয়া হবে।
 12) ডাটাবেস-এ প্রবেশের ক্ষমতা বৃদ্ধি করে দেওয়া হবে।
 13) ডাটাবেস-এ প্রবেশের ক্ষমতা বৃদ্ধি করে দেওয়া হবে।
 14) ডাটাবেস-এ প্রবেশের ক্ষমতা বৃদ্ধি করে দেওয়া হবে।
 15) ডাটাবেস-এ প্রবেশের ক্ষমতা বৃদ্ধি করে দেওয়া হবে।
 16) ডাটাবেস-এ প্রবেশের ক্ষমতা বৃদ্ধি করে দেওয়া হবে।
 17) ডাটাবেস-এ প্রবেশের ক্ষমতা বৃদ্ধি করে দেওয়া হবে।
 18) ডাটাবেস-এ প্রবেশের ক্ষমতা বৃদ্ধি করে দেওয়া হবে।
 19) ডাটাবেস-এ প্রবেশের ক্ষমতা বৃদ্ধি করে দেওয়া হবে।
 20) ডাটাবেস-এ প্রবেশের ক্ষমতা বৃদ্ধি করে দেওয়া হবে।
 21) ডাটাবেস-এ প্রবেশের ক্ষমতা বৃদ্ধি করে দেওয়া হবে।
 22) ডাটাবেস-এ প্রবেশের ক্ষমতা বৃদ্ধি করে দেওয়া হবে।
 23) ডাটাবেস-এ প্রবেশের ক্ষমতা বৃদ্ধি করে দেওয়া হবে।
 24) ডাটাবেস-এ প্রবেশের ক্ষমতা বৃদ্ধি করে দেওয়া হবে।
 25) ডাটাবেস-এ প্রবেশের ক্ষমতা বৃদ্ধি করে দেওয়া হবে।
 26) ডাটাবেস-এ প্রবেশের ক্ষমতা বৃদ্ধি করে দেওয়া হবে।
 27) ডাটাবেস-এ প্রবেশের ক্ষমতা বৃদ্ধি করে দেওয়া হবে।
 28) ডাটাবেস-এ প্রবেশের ক্ষমতা বৃদ্ধি করে দেওয়া হবে।
 29) ডাটাবেস-এ প্রবেশের ক্ষমতা বৃদ্ধি করে দেওয়া হবে।
 30) ডাটাবেস-এ প্রবেশের ক্ষমতা বৃদ্ধি করে দেওয়া হবে।
 31) ডাটাবেস-এ প্রবেশের ক্ষমতা বৃদ্ধি করে দেওয়া হবে।
 32) ডাটাবেস-এ প্রবেশের ক্ষমতা বৃদ্ধি করে দেওয়া হবে।
 33) ডাটাবেস-এ প্রবেশের ক্ষমতা বৃদ্ধি করে দেওয়া হবে।
 34) ডাটাবেস-এ প্রবেশের ক্ষমতা বৃদ্ধি করে দেওয়া হবে।
 35) ডাটাবেস-এ প্রবেশের ক্ষমতা বৃদ্ধি করে দেওয়া হবে।

NO.	DESCRIPTION	QTY	UNIT PRICE	TOTAL
182	সি.সি.সি.সি.	41.25	100	4125.00
183	সি.সি.সি.সি.	41.25	100	4125.00
184	সি.সি.সি.সি.	41.25	100	4125.00
185	সি.সি.সি.সি.	41.25	100	4125.00
186	সি.সি.সি.সি.	41.25	100	4125.00
187	সি.সি.সি.সি.	41.25	100	4125.00
188	সি.সি.সি.সি.	41.25	100	4125.00
189	সি.সি.সি.সি.	41.25	100	4125.00
190	সি.সি.সি.সি.	41.25	100	4125.00
191	সি.সি.সি.সি.	41.25	100	4125.00
192	সি.সি.সি.সি.	41.25	100	4125.00
193	সি.সি.সি.সি.	41.25	100	4125.00
194	সি.সি.সি.সি.	41.25	100	4125.00
195	সি.সি.সি.সি.	41.25	100	4125.00
196	সি.সি.সি.সি.	41.25	100	4125.00
197	সি.সি.সি.সি.	41.25	100	4125.00
198	সি.সি.সি.সি.	41.25	100	4125.00
199	সি.সি.সি.সি.	41.25	100	4125.00
200	সি.সি.সি.সি.	41.25	100	4125.00

TYPE	SIZE	DESCRIPTION
D	1.20 X 2.10	DOOR
D	1.05 X 2.10	ENTRY DOOR
D	1.05 X 2.10	TOILET DOOR
D	0.90 X 2.10	DOOR
D	2.10 X 2.10	SLIDING DOOR
W	1.50 X 1.40	WINDOW
V	0.75 X 0.75	TOILET VENTILATOR

OWNER'S SIGNATURE: _____
 ARCHITECT'S SIGNATURE: _____
 M.B. MAHESHWARI
 PROJECT TITLE: PROPOSED RESIDENTIAL APARTMENT BUILDING WITH AMENITY BLOCK AT SY. NO. 361 & 362, BHADRAKALITHAL, BANGALORE EAST WARD, BANGALORE.
 DRAWING TITLE: TERRACE FLOOR PLAN
 PLANNING AUTHORITY: _____
 N.G. ANAND, B.E., CIVIL
 Regd. Eng. No. 13454-48-4881/18
 SCALE: 1:150
 NORTH: _____
 DATE: _____

PROJECT TITLE: PROPOSED RESIDENTIAL APARTMENT BUILDING WITH AMENITY BLOCK AT SY. NO. 361 & 362, BHADRAKALITHAL, BANGALORE EAST WARD, BANGALORE.
 DRAWING TITLE: TERRACE FLOOR PLAN
 PLANNING AUTHORITY: _____
 N.G. ANAND, B.E., CIVIL
 Regd. Eng. No. 13454-48-4881/18
 SCALE: 1:150
 NORTH: _____
 DATE: _____

