

— THE —
LOFT

Concept & Design by
cultnerds.io | 773.00.65888

WHERE
PERSPECTIVE
DEEPENS,
LIFE BEGINS AGAIN.

EXCLUSIVE LUXURY 3BHK RESIDENCES





THE CIRCLE OF LIFE

EVERYTHING MEANINGFUL RETURNS
TO WHERE IT BEGAN.

Nature does not move forward endlessly.
It completes itself.
Cycles of growth, pause, renewal and return
shape everything meaningful.
The circle is not repetition.
It is fulfilment.
At The Loft, this philosophy becomes architecture.
Living that arrives at balance, not accumulation.



**DESIGNED
AROUND
CONTINUITY**

THE LOFT PHILOSOPHY

FULFILMENT IS CIRCULAR,
NOT CUMULATIVE.

In a city that keeps adding,
The Loft focuses on alignment.
Space aligns with light.
Height aligns with calm.
Luxury aligns with purpose.
Nothing here exists in isolation.
Every element completes another.



ELEVATION & CLARITY

CLARITY BEGINS ABOVE GROUND.

Height at The Loft is not about dominance.
It is about distance from noise.
Distance from urgency.
As elevation increases, distraction fades.
Perspective widens.
Calm settles.



144
EXCLUSIVE 3BHKS

30+
AMENITIES

2
ACRES OF LAND

6
UNIT TYPES

85%
OPEN SPACES

25
LAYERS OF
PERSPECTIVE





THREE BALCONIES

ONE RHYTHM

MOMENTS FIND THEIR DIRECTION.

Life does not move in one direction.

Morning light.

Midday calm.

Evening stillness.

Three balconies allow homes to respond
to changing moods, light and air.

A VIEW THAT LEAVES EXPRESSION BEHIND.

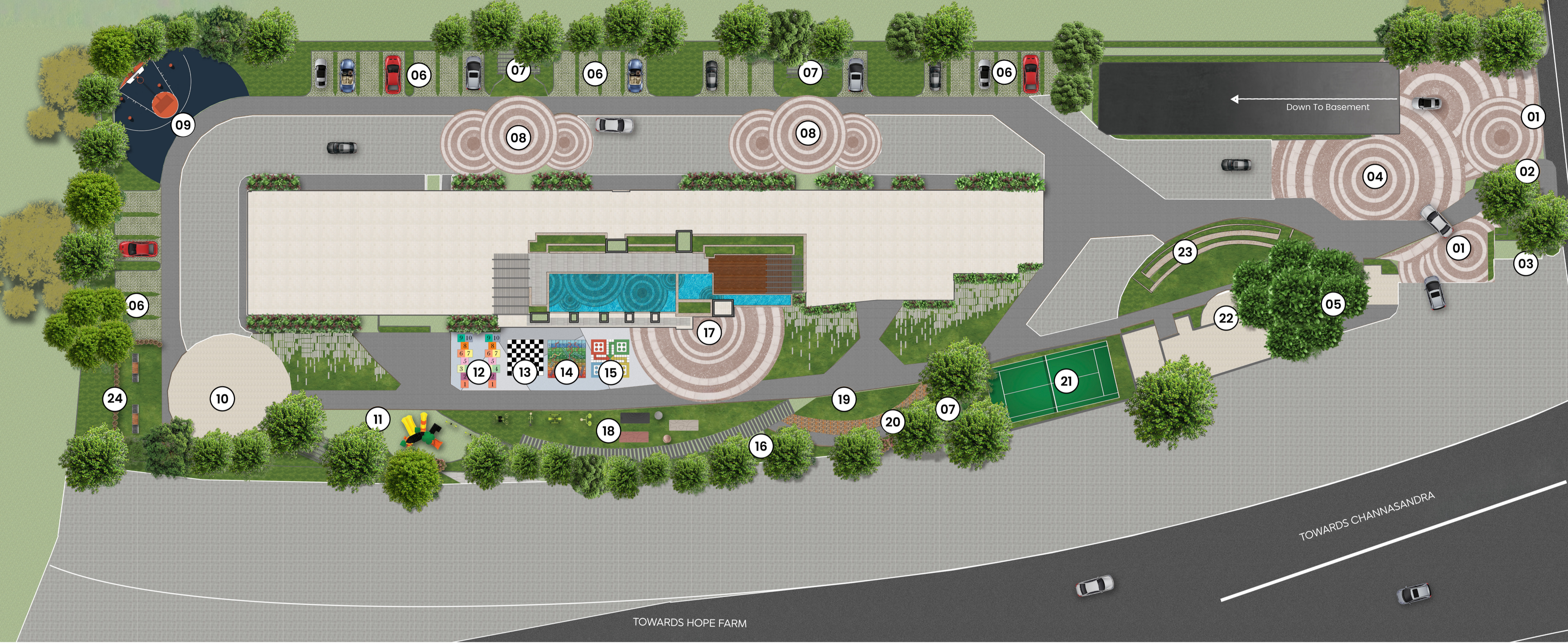
BOUNDARIES SOFTEN. LIVING EXPANDS.

Balconies at The Loft are not visual add-ons.
They are functional extensions of daily life.
Wide enough to inhabit.
Deep enough to pause.
They soften boundaries between inside and outside,
allowing living to expand naturally.



A PANORAMIC
ENTRY THAT
OUTSHINES EVERY
ATTEMPT TO
DESCRIBE IT.

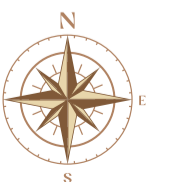




MASTER PLAN

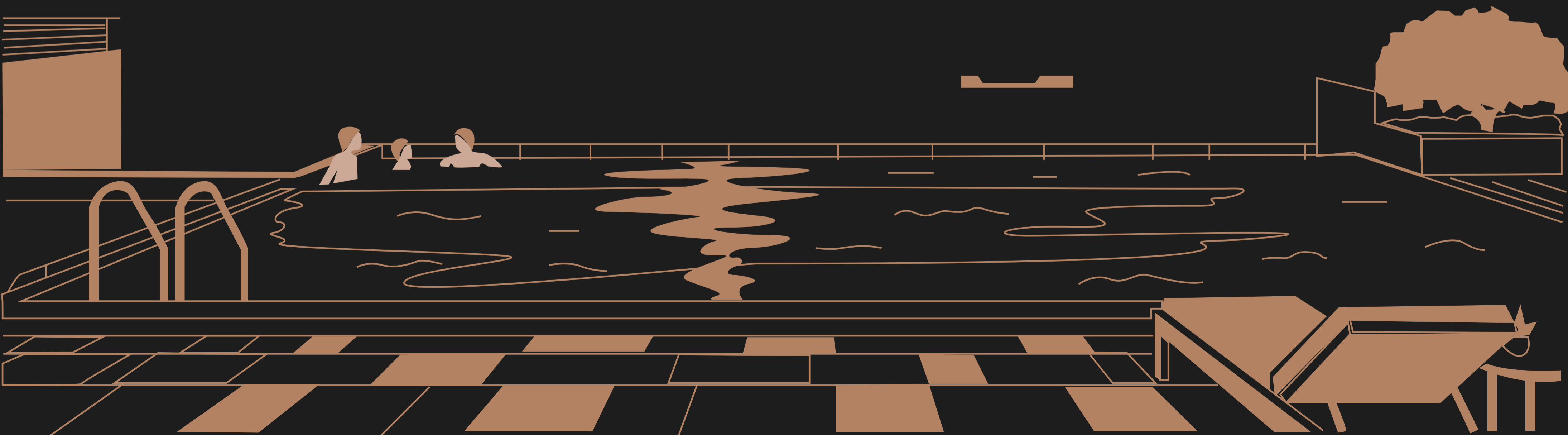
LEGEND

- | | | | | | | | |
|---|----------------------|----|--|----|------------------------------|----|---------------------------------|
| 1 | ENTRY PORTALS | 7 | PAVILION WITH SEATING | 13 | FLOOR GAMES GIANT CHESS | 19 | SENIOR CITIZEN ZONE / ELDER GYM |
| 2 | SECURITY CABIN | 8 | BLOCK ENTRY ACCENT PAVING | 14 | FLOOR GAMES SNAKE AND LADDER | 20 | REFLEXOLOGY PATHWAY |
| 3 | DELIVERY PARKING | 9 | DRIBBLE COURT WITH BASKETBALL TREE COURT | 15 | FLOOR GAMES LUDO | 21 | PICKLEBALL / BADMINTON COURT |
| 4 | ACCENT PAVING | 10 | SKATING RINK IN CUL DE SAC | 16 | PAVILION WITH FOOD COUNTER | 22 | PROJECTION WALL |
| 5 | BUS / CAB DROP POINT | 11 | CHILDREN PLAY AREA ON EPDM | 17 | PARTY SPILLOVER | 23 | AMPHITHEATRE |
| 6 | VISITORS PARKING | 12 | FLOOR GAMES HOPSCOTCH | 18 | MULTIPURPOSE LAWN AREA | 24 | BARBEQUE / SUNSET PARK |



ENDLESS

CALM



WATER WITH OUT EDGES

The rooftop infinity pool dissolves boundaries.
Water merges with sky.
Horizons continue uninterrupted.
Here, time loosens.
The body slows.
The mind releases.

ROOFTOP RETREAT



At the highest point, life rearranges itself.
Activity softens into reflection.
Energy settles into equilibrium.
The rooftop becomes a plane where routines
dissolve and perspective re-emerges.

CLUBHOUSE AMENITIES



KIDS SWIMMING POOL



INDOOR GAMES (TABLE TENNIS,
CARROM, CHESS, FOOSBALL,
SNOOKER)



YOGA HALL



GYM



MEDITATION HALL



ADULTS SWIMMING POOL

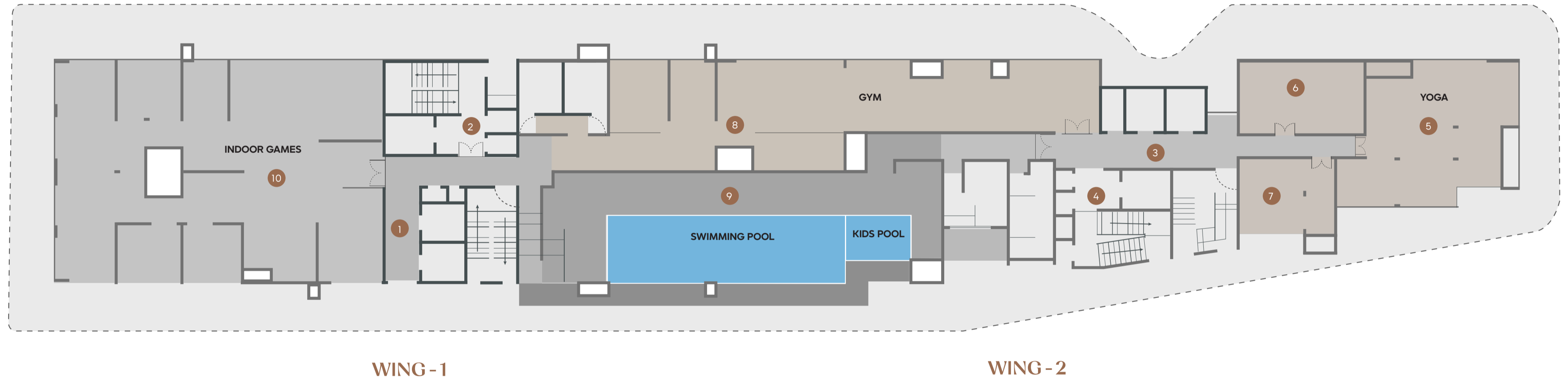


LIBRARY





CLUBHOUSE PLAN - 25th FLOOR



LEGEND:

- 1. LOBBY - WING 1
- 2. FIRE LOBBY - WING 1
- 3. LOBBY - WING 2
- 4. FIRE LOBBY - WING 2
- 5. YOGA ROOM

- 6. MEDITATION ROOM
- 7. LIBRARY
- 8. GYM
- 9. SEMI OPEN TERRACE
- 10. INDOOR GAME HALL

DISCIPLINE, REFINED




A space where effort transforms into endurance.

BALANCE



GROUND FLOOR AMENITIES



-  ENTRY PORTALS
-  BUS/CAB DROP POINT
-  DRIBBLE COURT WITH BASKETBALL TREE COURT
-  FLOOR GAMES - HOPSCOTCH
-  PAVILION WITH FOOD COUNTER
-  PICKLE BALL + BADMINTON COURT
-  SECURITY CABIN
-  VISITORS PARKING
-  SELF WALL TABLE TENNIS
-  FLOOR GAMES - GIANT CHESS
-  MULTIPURPOSE LAWN AREA - PARTY, CHILDREN PLAY
-  PROJECTION WALL
-  DELIVERY PARKING
-  PAVILION WITH SEATING
-  SKATING RINK IN CUL DE SAC
-  FLOOR GAMES - SNAKE & LADDER
-  PARTY SPILLOVER
-  AMPHITHEATER
-  ACCENT PAVING
-  BLOCK ENTRY ACCENT PAVING
-  CHILDREN PLAY AREA ON EPDM
-  FLOOR GAMES - LUDO
-  SENIOR CITIZEN ZONE - CHIT CHAT ZONE & ELDERS GYM
-  REFLEXOLOGY PATHWAY GYM



CONTROL THROUGH MOTION

Velocity guided by intention.

LIFE,



CAREFULLY



PLANNED



THE ARCHITECTURE OF BELONGING



HOMES FOR FAMILIES TO BREATHE

SPACE ALLOWS GROWTH.

Three bedroom residences shaped with generosity.
Layouts flow without confinement.
Rooms adapt as families grow.
Life evolves without resistance.
Homes remain supportive through every phase.



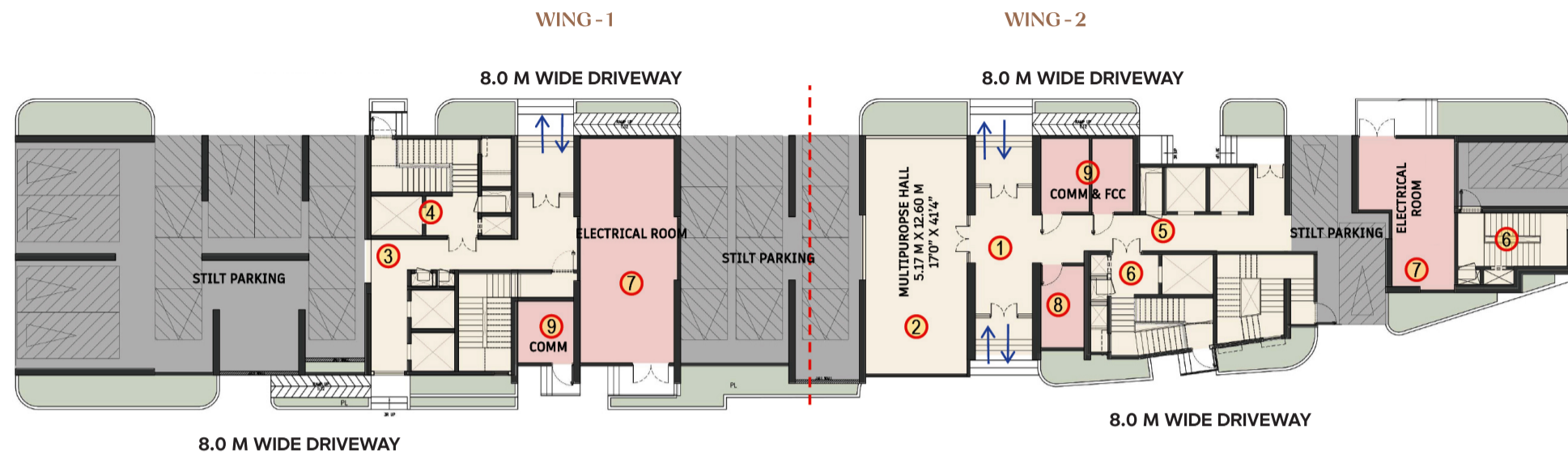
REFINEMENT, INTERIORISED



Luxury withdraws from display
and settles into detail.
Materials chosen for permanence,
proportions resolved with care,
light shaped to reveal rather than impress.
The home becomes a place of quiet certainty.



GROUND FLOOR PLAN



LEGEND:

- | | | |
|------------------------|------------------------|---------------------------|
| 1. PREFUNCTION / ENTRY | 4. FIRE LOBBY - WING 1 | 7. ELECTRICAL PANEL ROOMS |
| 2. MULTIPURPOSE HALL | 5. LOBBY - WING 2 | 8. PANTRY |
| 3. LOBBY - WING 1 | 6. FIRE LOBBY - WING 2 | 9. COMMUNICATION & FCC |

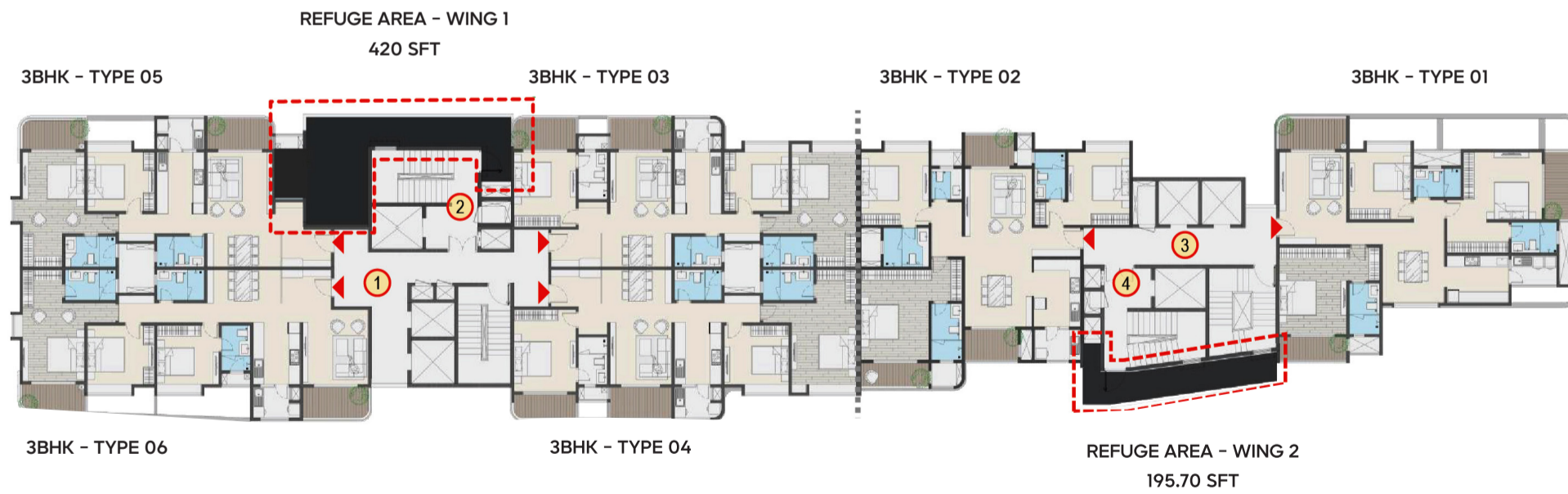
FIRST FLOOR PLAN



LEGEND:

- | | |
|------------------------|------------------------|
| 1. LOBBY - WING 1 | 3. LOBBY - WING 2 |
| 2. FIRE LOBBY - WING 1 | 4. FIRE LOBBY - WING 2 |

REFUGE FLOOR PLAN



LEGEND:

- | | |
|------------------------|------------------------|
| 1. LOBBY - WING 1 | 3. LOBBY - WING 2 |
| 2. FIRE LOBBY - WING 1 | 4. FIRE LOBBY - WING 2 |

TYPICAL FLOOR PLAN



LEGEND:

- | | |
|------------------------|------------------------|
| 1. LOBBY - WING 1 | 3. LOBBY - WING 2 |
| 2. FIRE LOBBY - WING 1 | 4. FIRE LOBBY - WING 2 |

3 BHK – 1881 Sft | EAST

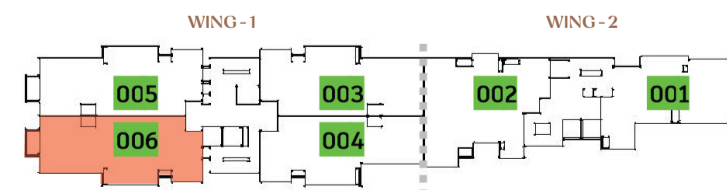


- | | | | | | | |
|--------------|-------------|--------------|-----------------|-----------------|-------------|-------------|
| 1 - ENTRANCE | 2 - BEDROOM | 3 - WASHROOM | 4 - LIVING AREA | 5 - DINING AREA | 6 - KITCHEN | 7 - BALCONY |
|--------------|-------------|--------------|-----------------|-----------------|-------------|-------------|

UNIT PLAN

UNIT NOS. 1-06 TO 24-06

AREAS :		RERA CARPET AREA = 1162 Sft
SALEABLE AREA	= 1881 Sft	UTILITY AREA = 36 Sft
BUILT UP AREA	= 1418 Sft	BALCONY AREA = 107 Sft



3 BHK – 1894 Sft | WEST

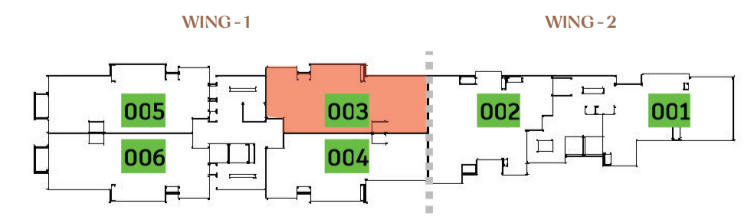


- | | | | | | | |
|--------------|-------------|--------------|-----------------|-----------------|-------------|-------------|
| 1 - ENTRANCE | 2 - BEDROOM | 3 - WASHROOM | 4 - LIVING AREA | 5 - DINING AREA | 6 - KITCHEN | 7 - BALCONY |
|--------------|-------------|--------------|-----------------|-----------------|-------------|-------------|

UNIT PLAN

UNIT NOS. 2-03 TO 24-03

AREAS :		RERA CARPET AREA = 1170 Sft
SALEABLE AREA	= 1894 Sft	UTILITY AREA = 37 Sft
BUILT UP AREA	= 1428 Sft	BALCONY AREA = 113 Sft



3 BHK – 1904 Sft | WEST

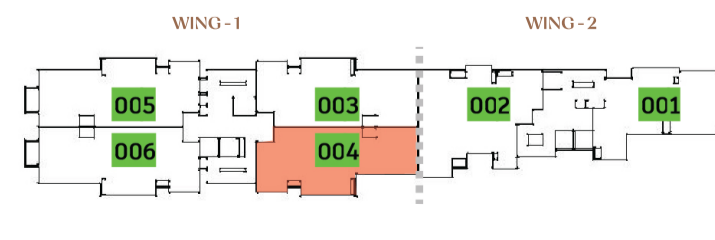


- 1 - ENTRANCE
- 2 - BEDROOM
- 3 - WASHROOM
- 4 - LIVING AREA
- 5 - DINING AREA
- 6 - KITCHEN
- 7 - BALCONY

UNIT PLAN

UNIT NOS. 1-04 TO 24 -04

AREAS :		RERA CARPET AREA = 1184 Sft
SALEABLE AREA	= 1904 Sft	UTILITY AREA = 39 Sft
BUILT UP AREA	= 1435 Sft	BALCONY AREA = 105 Sft



3 BHK – 1917 Sft | EAST

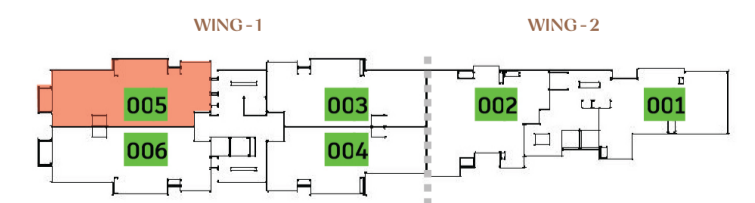


- 1 - ENTRANCE
- 2 - BEDROOM
- 3 - WASHROOM
- 4 - LIVING AREA
- 5 - DINING AREA
- 6 - KITCHEN
- 7 - BALCONY

UNIT PLAN

UNIT NOS. 2-05 TO 18-05 AND 20-05 TO 24-05

AREAS :		RERA CARPET AREA = 1183 Sft
SALEABLE AREA	= 1917 Sft	UTILITY AREA = 38 Sft
BUILT UP AREA	= 1446 Sft	BALCONY AREA = 112 Sft



3 BHK – 2185 Sft | WEST

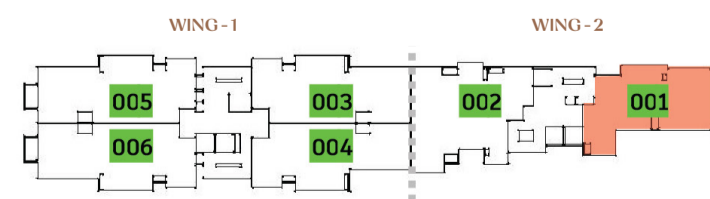


- 1 - ENTRANCE
- 2 - BEDROOM
- 3 - WASHROOM
- 4 - LIVING AREA
- 5 - DINING AREA
- 6 - KITCHEN
- 7 - BALCONY

UNIT PLAN

Unit Nos. 2-01 to 24-01

AREAS :	RERA CARPET AREA = 1303 Sft
SALEABLE AREA = 2185 Sft	UTILITY AREA = 41 Sft
BUILT UP AREA = 1648 Sft	BALCONY AREA = 167 Sft



3 BHK – 2244 Sft | EAST

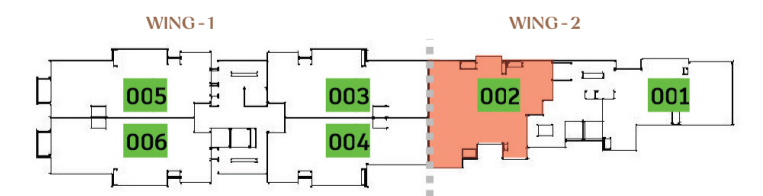


- 1 - ENTRANCE
- 2 - BEDROOM
- 3 - WASHROOM
- 4 - LIVING AREA
- 5 - DINING AREA
- 6 - KITCHEN
- 7 - BALCONY

UNIT PLAN

UNIT NOS. 1-02 TO 24-02

AREAS :	RERA CARPET AREA = 1355 Sft
SALEABLE AREA = 2244 Sft	UTILITY AREA = 44 Sft
BUILT UP AREA = 1692 Sft	BALCONY AREA = 148 Sft



S



E

C I F I C A T I O N S

S P E C I F I C A T I O N S

S P E C T I O N S





STRUCTURE:

- RCC structure to withstand wind & seismic loads as per IS code with RCC walls
-



DOORS:

- **Main doors:** 8 feet high Engineered Hardwood frame with flush shutter of 38mm with laminate on both sides.
 - **Internal doors:** Engineered Hardwood frames with flush shutters of 32mm laminate on both sides.
 - **Toilet doors:** Engineered Hardwood frames with flush shutters of 32mm laminate on both sides.
 - **Utility Doors:** Aluminum with Clear Glass door
 - **French Doors:** Aluminium door system with sliding shutters and provision for mosquito mesh track.
 - **Windows:** Sliding/Fixed Aluminium window system with provision for mosquito mesh track.
-



PAINTING:

- **External:** Textured/smooth finish & two coats of exterior paint.
 - **Internal:** Smooth putty finish with two coats of premium emulsion paint for walls and emulsion paint for ceiling over one coat of primer.
-



FLOORING:

- Ground wing lobby: Granite/Marble flooring
 - Staircase/Corridors: Granite /Vitrified tile/Cement Tiles in Steps
 - Master bedroom with laminated wooden flooring, Living, Dining, Bedrooms & Kitchen are Glazed vitrified tiles.
 - Toilets: Mat/Anti-skid ceramic tiles with spacer joint. Tile dado up to False-ceiling level
 - Balconies & Utility: Mat/Anti-skid ceramic tiles with spacer joint.
 - Lift Lobby: Granite/Tiles combination
 - Basement: cement concrete flooring with smooth finish.
-



HAND RAILING:

- Balcony: M.S railing with enamel paint finish / Aluminium railing with DGU Glass.
 - Staircase: M.S railing with enamel paint
-



TOILETS:

- Granite counter for wash basin in Master Bedroom or Guest Bedroom.
- Wall mounted EWC with concealed flush tank/valve.
- Single lever wall mixer cum shower.
- Provision for Geysers and exhaust fans in all bathrooms.



ELECTRICAL:

- 5 KW for all 3 BHK
 - Concealed copper wiring in conduits,
 - All necessary light and fan points shall be provided as per the design.
 - Plug points and switches of reputed make
 - Power sockets in kitchen for Hob, Chimney, Refrigerator, Microwave oven, Mixer.
 - Power plug for washing machine, Power plug for dishwasher
 - Power socket for air conditioning in living and all bedrooms
 - Power outlets for Geyser's and exhaust fans in all bathrooms. 6 Amp socket near mirror.
 - 100% power back up.
-



PLUMBING:

- Sanitary fixtures of reputed make in all toilet's chromium plated fittings in all toilets
 - Drainage/sewage: PVC pipes & fittings
 - Water supply (Internal & External): CPVC or UPVC pipes & fittings.
-



TELECOM/INTERNET/CABLE TV:

- Provision for Internet, DTH, Telephone & Intercom.
-



LIFTS:

- High speed premium makes passenger lifts 3 in each wing.
-



WATER SOFTENER:

- Water softener Plant of adequate capacity will be provided to soften the all the domestic water.
-



STP/WSS:

- A Sewage Treatment plant of adequate capacity as per norms will be provided inside the project. Treated sewage water will be used for the landscaping & Toilet flushing purpose.
-



PARKING:

- Covered car parks in basement levels
 - Surface car parking for visitors
-



FIRE & SAFETY:

- Fire hydrant & fire sprinkler system in all flats, corridor & basements.
- Public address system

LOCATION THAT COMPLETES THE CIRCLE

Whitefield offers access without excess. Work, education and leisure remain within reach. Yet the home stays composed. Connectivity serves life rather than overwhelming it.



HOTELS



SPORTS ACADEMY



SCHOOLS



HOSPITAL



IT OFFICES



MALLS

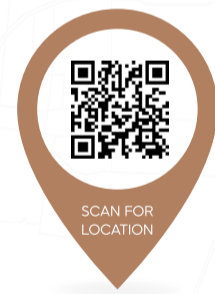
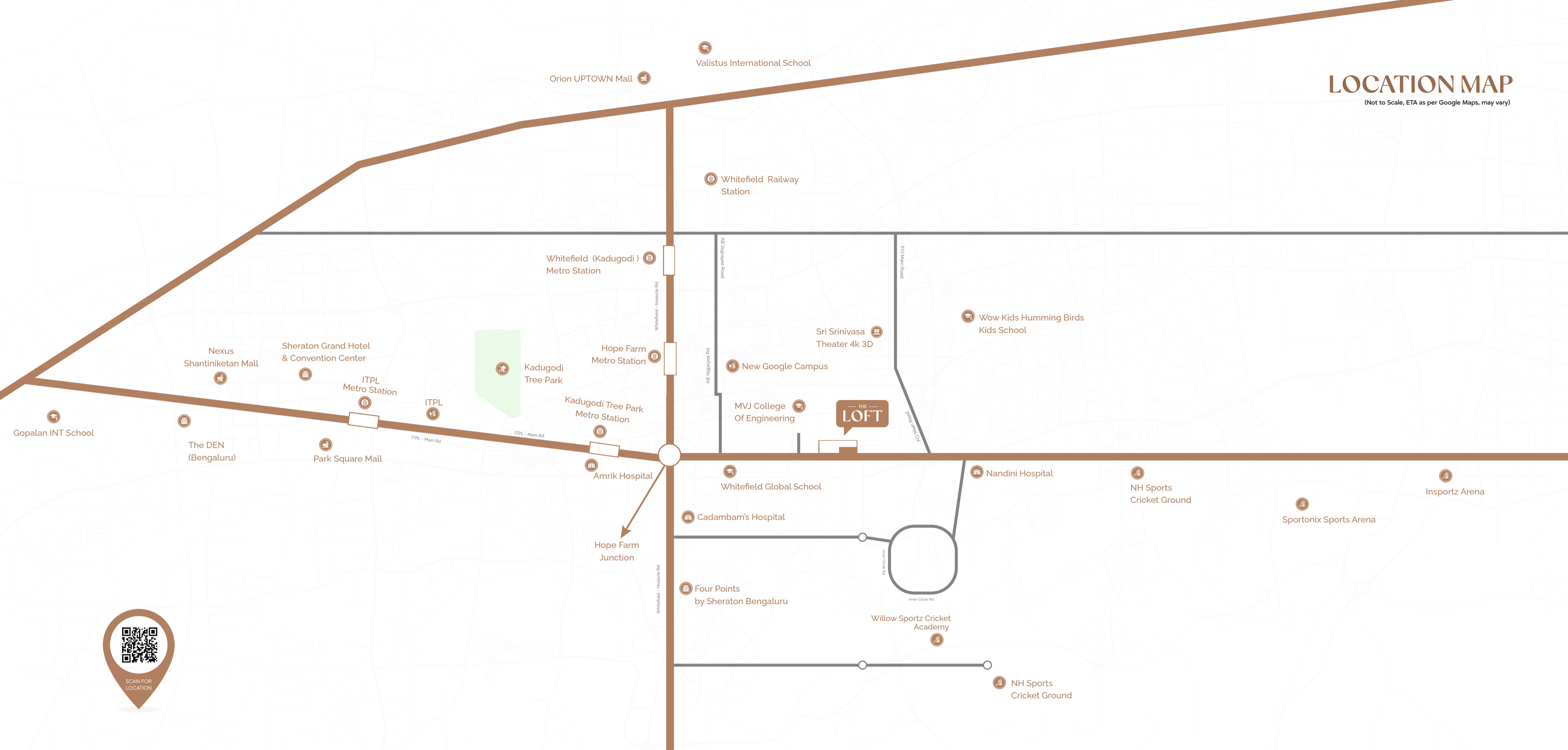


METRO



LOCATION MAP

(Not to Scale, ETA as per Google Maps, may vary)



EVERYTHING
CLOSE.
NOTHING
INTRUSIVE.

HOSPITALS
 14 mins › Aster Whitefield Hospital
 15 mins › Manipal Hospital

MALLS
 9 mins › Park Square Mall
 15 mins › Nexus Whitefield Mall

METRO
 5 mins › Kadugodi Tree Park Metro
 8 mins › Hope Farm Merto
 11 mins › ITPL Metro

HOTELS
 7 mins › Points by Sheraton

IT OFFICES
 5 mins › New Google Campus
 11 mins › ITPL

SPORTS ACADEMY
 6 mins › Sportonix Sports Arena
 10 mins › Insportz Arena

EDUCATIONAL INSTITUTIONS
 1 mins › MVJ College of Engineering
 2 mins › Whitefield Global School
 15 mins › Valistus International School
 31 mins › Gopalan International School

LIFE
COMES IN



FULL CIRCLE
HERE.

— THE —
LOFT

PRM/KA/RERA/1251/446/PR/070126/008387



RISE builds with intention and restraint. Every project reflects thoughtful design and lasting value. Homes shaped to serve life, not trends. The Loft stands as a continuation of that philosophy.

📍 Office Address - 2-S 2nd Floor,
The Planet, No54, Whitefield Road,
Mahadevapura, Bengaluru - 560066

📍 Site Address -Syno- 118/1 & 118/2, Channasandra
Village , Kadugodi Post, Bidarahalli Hobli,
Bengaluru East - 560067

A PROJECT BY



Sales Partner



Architect



Structural Consultant



Landscape Architect



MEP Consultant



Branding Partner

